

USER NOTES
 Some features of this map have been derived from modelled outputs of the Lower Lee Valley Regeneration SFRA TUFLOW Model, completed by Capita Symonds, May 2007. The Modelling Report should be consulted to determine limitations and uncertainties associated with the Model.

The tidal reach of the River Thames extends up the Lower Lee Valley to the Lee Bridge sluices. It is possible that the part of the River Lee within Hackney may be influenced by tidal processes and therefore an allowance for the tidal influence has been included within the hydrodynamic modelling.

It should be noted that the rate of onset of flooding in Hackney Wick has been calculated from the point at which flood waters come out of bank at points A and B.

COPYRIGHT
 This map is based upon Ordnance Survey material with the permission of Ordnance Survey on behalf of the Controller of Her Majesty's Stationery Office © Crown copyright. Unauthorised reproduction infringes Crown copyright and may lead to prosecution or civil proceedings. © Licence No. 100031673, 2010.

Some features of this map are based on information provided by the Environment Agency, Copyright © Environment Agency, 2010.

Rate of Onset of Flooding 1 in 100yr Fluvial & 1 in 20yr Tidal (2009)

| | | | |
|--|----------------------------------|---|--|
|  Hackney Administrative Area Boundary | Rate of Onset of Flooding |  < 1 hour |  8-12 hours |
|  Hackney Wick AAP Boundary | |  1-2 hours |  12-24 hours |
| | |  2-4 hours |  24-36 hours |
| | |  4-8 hours | |

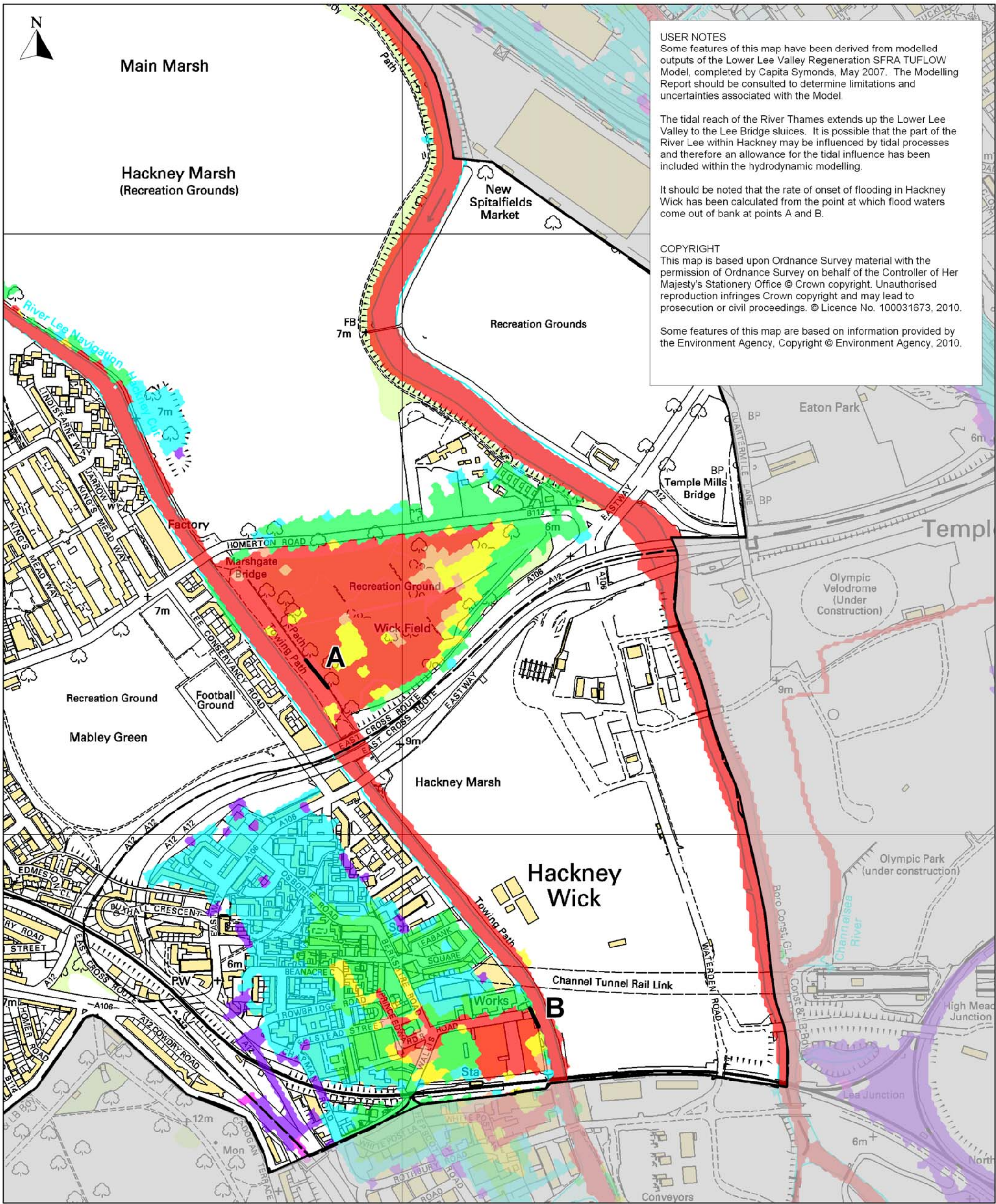


Scott Wilson
 6-8 Greencoat Place
 London, SW1P 1PL
 Tel: (020) 7798 5000



| | | | | | |
|----------|------------|-----------|----------|------------|----------------|
| DRAWN BY | CHECKED BY | PASSED BY | DATE | SCALE @ A3 | ISSUING OFFICE |
| SL | EG | JR | AUG 2010 | 1: 6,000 | LONDON |

| | |
|----------------|-----|
| DRAWING NUMBER | REV |
| FIGURE 06 - A | 02 |



USER NOTES
 Some features of this map have been derived from modelled outputs of the Lower Lee Valley Regeneration SFRA TUFLOW Model, completed by Capita Symonds, May 2007. The Modelling Report should be consulted to determine limitations and uncertainties associated with the Model.

The tidal reach of the River Thames extends up the Lower Lee Valley to the Lee Bridge sluices. It is possible that the part of the River Lee within Hackney may be influenced by tidal processes and therefore an allowance for the tidal influence has been included within the hydrodynamic modelling.

It should be noted that the rate of onset of flooding in Hackney Wick has been calculated from the point at which flood waters come out of bank at points A and B.

COPYRIGHT
 This map is based upon Ordnance Survey material with the permission of Ordnance Survey on behalf of the Controller of Her Majesty's Stationery Office © Crown copyright. Unauthorised reproduction infringes Crown copyright and may lead to prosecution or civil proceedings. © Licence No. 100031673, 2010.

Some features of this map are based on information provided by the Environment Agency, Copyright © Environment Agency, 2010.

Rate of Onset of Flooding 1 in 100yr Fluvial & 1 in 20yr Tidal (2109)

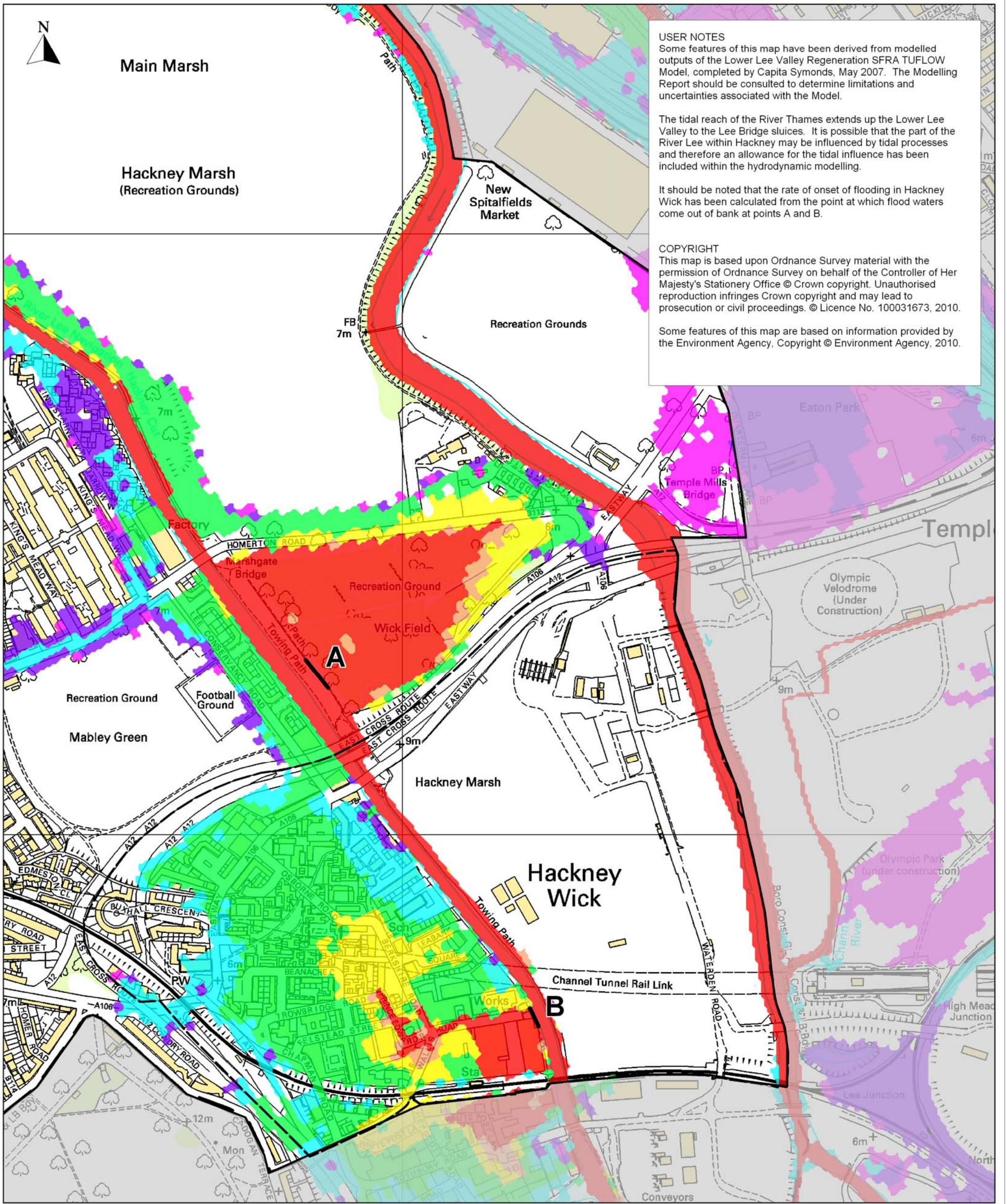
| | | |
|--|--------------------------------------|--|
| | Hackney Administrative Area Boundary | Rate of Onset of Flooding < 1 hour 8-12 hours 1-2 hours 12-24 hours 2-4 hours 24-36 hours 4-8 hours |
| | Hackney Wick AAP Boundary | |



Scott Wilson
 6-8 Greencoat Place
 London, SW1P 1PL
 Tel: (020) 7798 5000

| | | | | | |
|----------|------------|-----------|----------|------------|----------------|
| DRAWN BY | CHECKED BY | PASSED BY | DATE | SCALE @ A3 | ISSUING OFFICE |
| SL | EG | JR | AUG 2010 | 1: 6,000 | LONDON |

| | |
|----------------|-----|
| DRAWING NUMBER | REV |
| FIGURE 06 - B | 02 |



USER NOTES
 Some features of this map have been derived from modelled outputs of the Lower Lee Valley Regeneration SFRA TUFLOW Model, completed by Capita Symonds, May 2007. The Modelling Report should be consulted to determine limitations and uncertainties associated with the Model.

The tidal reach of the River Thames extends up the Lower Lee Valley to the Lee Bridge sluices. It is possible that the part of the River Lee within Hackney may be influenced by tidal processes and therefore an allowance for the tidal influence has been included within the hydrodynamic modelling.

It should be noted that the rate of onset of flooding in Hackney Wick has been calculated from the point at which flood waters come out of bank at points A and B.

COPYRIGHT
 This map is based upon Ordnance Survey material with the permission of Ordnance Survey on behalf of the Controller of Her Majesty's Stationery Office © Crown copyright. Unauthorised reproduction infringes Crown copyright and may lead to prosecution or civil proceedings. © Licence No. 100031673, 2010.

Some features of this map are based on information provided by the Environment Agency, Copyright © Environment Agency, 2010.

Rate of Onset of Flooding 1 in 1000yr Fluvial & 1 in 20yr Tidal (2009)

| | | |
|---|--------------------------------------|--|
|  | Hackney Administrative Area Boundary | Rate of Onset of Flooding  < 1 hour  1-2 hours  2-4 hours  4-8 hours  8-12 hours  12-24 hours  24-36 hours |
|  | Hackney Wick AAP Boundary | |



Scott Wilson
 6-8 Greencoat Place
 London, SW1P 1PL
 Tel: (020) 7798 5000



| | | | | | |
|----------|------------|-----------|----------|------------|----------------|
| DRAWN BY | CHECKED BY | PASSED BY | DATE | SCALE @ A3 | ISSUING OFFICE |
| SL | EG | JR | AUG 2010 | 1: 6,000 | LONDON |

| | |
|----------------|-----|
| DRAWING NUMBER | REV |
| FIGURE 06 - C | 02 |