



TfL Street Management

Timing Sheets

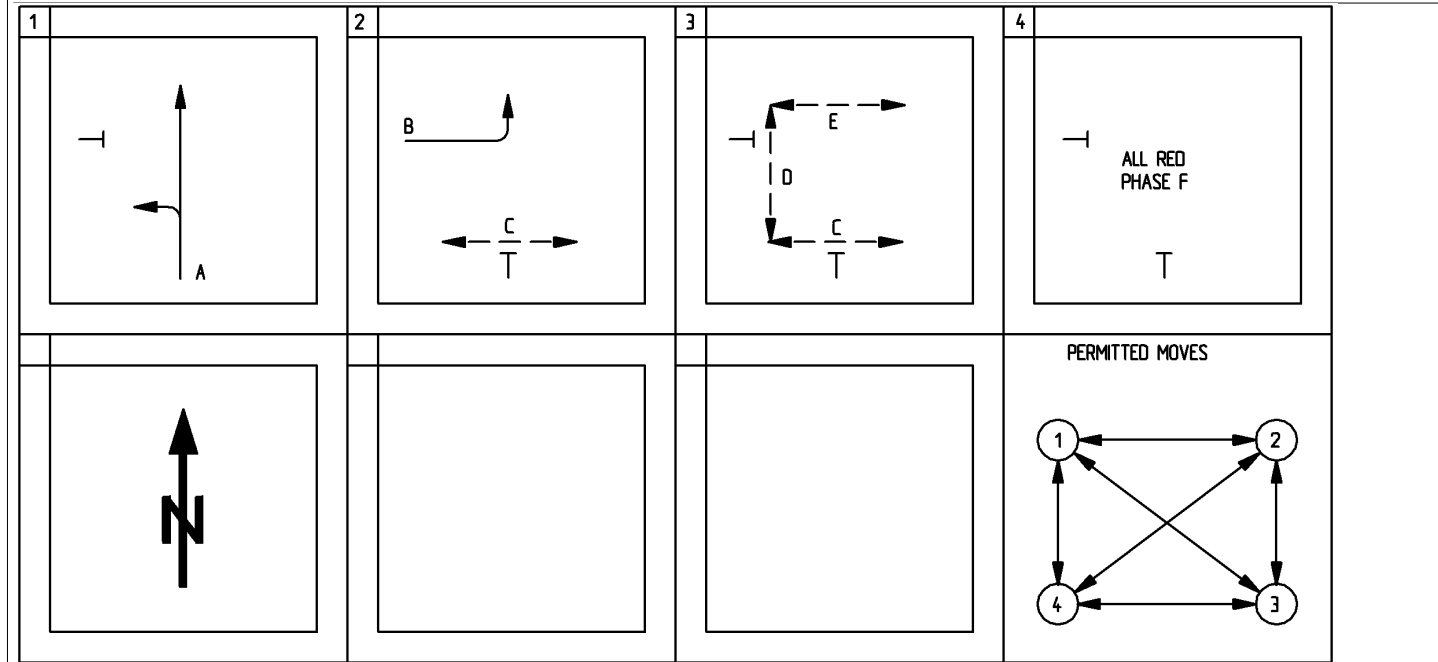
UTC Micro

London Borough Of	Grid Reference	UTC Type	Bt Line No	Issue	Date Implemented	Initials	Site Number
HACKNEY	533617/186545	NOR2	ANUK 724932	23	14-AUG-2009	GAZLEYN	04/000029/

Address
A10 STOKE NEWINGTON HIGH STREET - B104 STOKE NEWINGTON CHURCH STREET

PDU Rate	Controller Installed Date	Engineer Responsible	Linking
100	15-JUL-2001	MODSJVB	04/000221/

Computer	Control	Control	Concentrator	Prom Number	Firmware	Controller Type
Takeover Date	Group	Subgroup	Subgroup			
21-JAN-1976	176	04/000029/		6		Peek TSC3 Ctr UTC with Integral Facs



Unable to establish Issue No for Stage Diagram

TFL Drg No
Sig Drg No PRO/04/029/05

HI Signal YES
Dimming 160 Volts

Word	Bit	01	02	03	04	05	06	07	08	09	10	11	12	13	14	15	16
Type	CONTROL	1F1	1F2	1F3	1DX	1TS				1EP			2F1	2F2	2DX		
83	REPLY1	1G1	1G2	1G3	1JD	1RT	1JL	1RF1	1RF2	1EC	1SB0	1SB1	2G1	2G2	2JL	2JD	1BM



Phase Timings						
Phase	Min	Ext	Max	Ped Black	Phase Type	Alternative Maximums
A	7				T	
B	7				T	
C	5			4	P	
D	5			4	P	
E	5			5	P	
F	3				D	

Issue	Site Number
23	04/000029/

Phase Intergreens

		To Phase					
		A	B	C	D	E	F
From Phase	A		5	6	8	9	3
	B	5			6	9	3
	C	9					4
	D	10	10				4
	E	11	11				5
	F	2	2	2	2	2	



TfL Street Management

Timing Sheets

UTC Micro

Mode Priority	CLF PLAN1		CLF PLAN2		CLF PLAN3		CLF PLAN5		CLF PLAN8		Issue	Site Number
	Time Of Day	Operation Type	Time Of Day	Operation Type	Time Of Day	Operation Type	Time Of Day	Operation Type	Time Of Day	Operation Type	23	04/000029/
UTC												
Hand Control												
Manual Select	07:00	9	06:00	0	16:00	9	00:00	7	20:00	7		
Hurry (1)			06:00	1								
Hurry (2)			10:00	9								
VA												
CLF												
Fix Time												
Bus Priority												
	Cycle Time		Cycle Time		Cycle Time		Cycle Time		Cycle Time			
	88		80		88		56		80			

Phase Delays				Phase Delays				Phase Delays				Phase Delays			
Stage From	Stage To	Phase Associated	Delay Period	Stage From	Stage To	Phase Associated	Delay Period	Stage From	Stage To	Phase Associated	Delay Period	Stage From	Stage To	Phase Associated	Delay Period
2	1	B	5												

DET	Function	Phase	DET	Function	Phase	DET	Function	Phase	DET	Function	Phase
BIRD	CAL	B	iSB0	BUS	A						
PB P1	CAL	D	iSB1	BUS	B						
PB P10	CAL	D									
PB P3	CAL	E									
PB P4	CAL	E									
PB P6	CAL	C									
PB P8	CAL	C									
SD0/1	SCT	A									
iSB0	BUS	A									

Issue	Historical Amendments
23	iBUS UTC ENABLED. 14-AUG-09 GAZLEYN
22	iBUS AMENDMENTS. 15-JUL-2009. CALLAWAYP
21	iBUS DETECTION EQUIPMENT INSTALLED & LOCALLY COMMISSIONED. 19-MAR-09 EDGHILLD
20	iBUS DATA LOADED FOR CONFIGURATION. 05-MAR-2009. CALLAWAYP
19	NEW PROM INSTALLED & COMMISSIONED WITH TELE 12 TOPS ACR 09-JAN-2008
18	SITE COMMISSIONED ON UTC. 02-JUL-07 RANGLAA
17	BUS BEACONS COMMISSIONED AND COUNTING LOCALLY. 15-FEB-07 RICHESK
16	SITE LINKED TO 04/221 AND NEW PROM INSTALLED & COMMISSIONED. 05-DEC-06 RANGLA **UTC STILL TO BE COMMISSIONED**
15	BIRD IS NOW AIMS TYPE. 09-FEB-06 FCC DCW

Remarks	
Version No	
Linking	LINKED TO 04/221
Comments	TFL SPEC ISSUE 6
Det Strategy	IRD - PUSH BUTTONS / TACTILES - SCOOT LOOP - iBUS (TSN 1500)
Amendment	iBUS UTC ENABLED. 14-AUG-09 GAZLEYN