

20
10

HACKNEY
AWARDS
DESIGN



“The Design Awards are a celebration of the great design and architecture in Hackney. We know that high quality, contemporary buildings and public spaces contribute to the surrounding area and make a real difference to our neighbourhoods. The Council will continue to encourage excellence in all development.”

Jules Pipe
Mayor of Hackney



Introduction


The Hackney Design Awards began in 2004 and has gone from strength to strength ever since. The idea behind the awards was simple – set a high standard for development in the borough; encourage a dialogue about design among professionals and the community; involve as many people as possible; and then showcase and celebrate the results.

In 2010, the quality of schemes vying to be recognised by the Hackney Design Awards is as high as ever, with some schemes also being recognised nationally and internationally in awards ranging from sustainability to housing and the acclaimed RIBA Stirling Prize. These accolades are highly sought after by designers and developers and a Hackney Design Award is now clearly established as one to attain.

An unprecedented 55 nominations were received and we are pleased to announce that from the 19 shortlisted schemes we have six winners and five commendations.

For the first time, residents and visitors to the borough have had the chance to be involved by choosing their favourite scheme from the shortlist. This year we launched the People’s Choice Award which received 865 votes; a clear indication that the real winner of the Hackney Design Awards is the community who feels strongly about the designs that have made a difference in their lives.

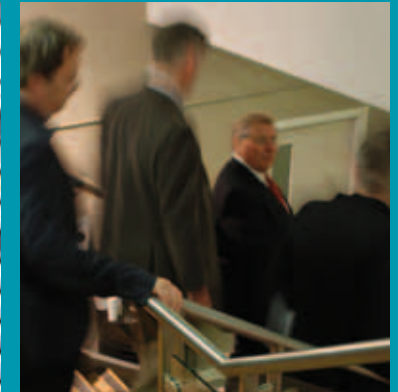
The biennial Hackney Design Awards demonstrate Hackney Council’s commitment to celebrating design excellence in the built environment. The objectives the awards set out to achieve are being realised beyond our expectations. We applaud all those in the design community and encourage them to continue to pursue and deliver great design in Hackney.

 For more information on the 2010 and previous Hackney Design Awards go to: www.hackney.gov.uk/designawards

The Process and Judging Panel

The 2010 awards were launched on 24 May and nominations closed on 2 August. We received 55 entries and the Judging Panel convened in September to determine a shortlist. Each shortlisted scheme was visited by the Judging Panel in October and their decisions on winners and commendations were made.

The Judging Panel is made up of professionals in architecture, urban design, development and regeneration. The Council would like to thank the Judges for their lively contributions and for volunteering their professional expertise and their time to the 2010 Hackney Design Awards.



Stephen Marshall
Director, Stephen
Marshall Architects LLP
and 2010 Hackney
Design Awards
Judging Panel Chair



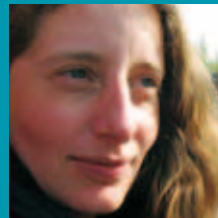
**Stephen
McDonald**
Assistant Director
Regeneration (Interim),
Hackney Council



Tony Pidgley
Chairman, The
Berkeley Group plc



Tim Ronalds
Director,
Tim Ronalds Architects



Lisa Rigg
Heritage Consultant,
The Hackney Society.



Dominic Cullinan
Director, SCABAL
Architects

Winner

The Barn and Eco Garden at the Eastern Curve

Landscape Architect	J&L Gibbons LLP
Architect	muf architecture art
Architecture/art collective	EXYZT
Client	Hackney Council
Client	Design for London, London Development Agency
Contractor	Davies and Davies (Group) Limited
Contractor	PGSD Limited
Address	13 Dalston Lane, London E8 3DF

The Project

The Eastern Curve was a strip of overgrown, abandoned railway land and was identified as one of 76 micro-projects in the “Making Space in Dalston” project by J&L Gibbons and muf. In 2009, EXYZT used the site to construct The Dalston Mill, an art installation curated by the Barbican and visited by 12,000 people.

The Barn then evolved as an open sided structure built by young apprentices from the Forest Road Youth Hub, with a recycled Jara dance floor, rainwater storage and furniture made in community workshops. It protects from the rain and offers flexibility of use. The garden provides growing patches within an ecology of ruderal vegetation with pioneer woodland and a boardwalk that lines a meadow with clumps of hazel, cobnut, and gean to create a landscape of depth and intermittent view.

The project allows the community to evolve a pattern of use, and promotes an open, creative dialogue to achieve a meaningful change on this strategically important site.

Judge’s Comments

Entering, through the almost hidden doors beside the Peace Mural, the Judges found themselves in an oasis of tranquillity compared to the bustling urban environment of Dalston Junction. Full of natural materials and with the ‘back garden’ like vegetable patches between meandering paths – we immediately felt welcome. The barn structure was simple and yet very attractive. Its five separate but open spaces were clearly being used in a variety of ways during our visit. Other groups of people were scattered throughout the garden, drinking tea and enjoying the sunshine.

The Barn and Eco Garden is an excellent example of how an abandoned piece of land can be affordably transformed into an asset that enhances the locality and benefit the community. Every inch has a strong sense of community spirit.



Winner

22 – 24 Bateman’s Row

Architect	Theis and Khan Architects Ltd
Client	Soraya Khan and Patrick Theis
Contractor	Silver Interiors Design and Build Limited
Address	22-24 Bateman’s Row, London EC2A 3HH

The Project

Bateman’s Row is a highly contemporary, yet contextual six-storey building within the existing cityscape. It maximises accommodation for commercial and residential units and makes the most of a confined site in Shoreditch.

The mixed-use building enhances the experience of all users, providing an art gallery at ground and basement, first floor architect’s offices, several residential units and family home at its top, complete with planted roof terraces that provide views of the city. The scheme maximises space and light by climbing vertically in distinct phases over five floors. It introduces wide expanses of flush-fixed glazing and a contemporary smooth finish that alternates with rough and robust edges at the ground that respond to its industrial origins and local setting.

The internally exposed concrete structure acts as a thermal store, combined with a highly insulated envelope and natural ventilation. Solar panels supplement hot water provision.

For more information about the scheme and the architect visit www.theisandkhan.com

Judge’s Comments

Tucked down a narrow street in Shoreditch this ingenious mixed-used development combines quirky features with fine attention to detail. Shutter-cast concrete and yellow Danish bricks with ‘bagged’ rather than ‘pointed’ joints add rustic charm to what is in essence, an old-fashioned Modernist building. Bateman’s Row’s modest, yet stunning, façade conceals an intricate, geometric puzzle within.

The small site holds an impressively dense mix of residential and commercial space – a good-sized family home with a separate floor dedicated to accommodating four children, three flats, an office, art gallery and a garage. The building sits comfortably within its industrial surrounds and makes direct reference to the nearby buildings. The Judging Panel thought the scheme exceptional – the density, excellent composition, the quality of design and its finish. It is a deserving winner.



Winner

Bridge Academy

Architect	BDP
Client	UBS Investments Bank
Client	Bridge Academy
Contractor	Mace Plus
Address	Laburnum Street, London E2 8BA

The Project

Bridge Academy, accommodating 1,150 pupils, is situated on a brownfield site in the heart of a multi-ethnic community. The design responds to its constrained inner city site along the Grand Union Canal by splitting into three elements – the “sound shell” wraps teaching spaces around the social heart of the school and terraces down to the canal; the sports hall, which is set below ground; and the “music box” at the edge of the canal which also transforms into a 450-seater auditorium. These elements are unified through multilevel landscape, a mixture of social and play space above and between.

A curved truss suspends the library above the central square, leaving it free for assembly and social interaction. The structure is intentionally visible, so that in keeping with the specialism of maths and music, the school becomes not just be an environment to learn in, but an environment to learn from.

For more information visit www.bridgeacademy.hackney.sch.uk or the architect’s website www.bdp.com

Judge’s Comments

What would you like to find when you walk into your school? Surely, everything that is in the Bridge Academy. This is a thrilling building, enticing and crucially – very grown up.

It’s thick with references, like walking into a vast modernist library or the foyer of a concert hall in Berlin. Its brief must have been “make the school day irresistible to the students”. This ambition appears almost insurmountable given the small site.

Outside it is very odd. But once inside, the architects’ chaotic vision is revealed as something very different. A building realised, and indeed, reinforced by the meticulous and painstaking arrangement of its parts – half flight stairs, balconies, exposed structure, holes in floors exposing furniture that sits beneath. Every part flows easily to the next, leading the eye on a sumptuous never ending journey, like learning should be.

It proves a school can be placed anywhere – but can be so much more than just “anywhere” when placed with such loving care. Well done.



Winner

City Academy



Architect	Studio E Architects
Client	City Academy Trust (City of London Corporation and KPMG)
Contractor	Willmott Dixon Group
Address	Homerton Row, London E9 6EA

The Project

City Academy is an educational facility with a thoroughly integrated sustainable strategy. It provides for 1,100 students aged 11-18.

Situated on a tight urban site flanked by a busy main road, the thin long plot was used to advantage with a design that weaves round existing trees and with classrooms running either side of a naturally lit circulation space. Internally the schools transparent classroom walls are designed to maximise daylight. This increases the pupil's concentration and good behaviour, while also contributing to improved security. Further natural light is provided by three large ETFE roofs over the atrium corridors.

The multi-coloured cladding is designed to create a landmark building and is an effective acoustic screen with attenuated ventilation openings. This building has achieved an A rated energy performance certificate.

For more information visit www.thecityacademy.org or the architect's website at www.studioe.co.uk

Judge's Comments

The needs of 1,100 students should be too big for this site, yet the architect has created a ribbon of glass and colour that feels spacious and light. From the outside the building is perhaps a little too 'notice me' with its array of primary colours; but it comes into its own on the inside. The glass walls open up classrooms to corridors and students can be seen and feel safely supervised wherever they are. Retaining the mature trees was treated as an asset, with the building snaking around them. This along with the big windows creates a calm and thought-provoking environment.

When we asked a student what was the best thing about the building, he replied "the opportunity". The judges agree – it is hard to imagine a child attending City Academy that will not be a better student as a result of the way the building conveys its purpose through effective design. Once a last resort school choice – it is now oversubscribed.

Winner

Clapton Girls' Technology College

Architect	Jestico + Whiles
Client	Hackney Council
Client	Clapton Girls' Technology College
Contractor	Mansell Construction Services
Address	Laura Place, Lower Clapton, London E5 0RB

The Project

Clapton Girls' Technology College has been transformed as a result of funding from the Building Schools for the Future programme, which has seen its existing buildings fully refurbished to modern day standards, and two new buildings constructed on the campus. These provide a new sixth form centre, assembly hall and dining hall. The built 'insertions' are deliberately respectful of the school's historic architecture, but draw inspiration from this and interpret the existing buildings in a contemporary way.

The new site masterplan resolves overcrowding and circulation problems by successfully strengthening movement between the new and existing buildings. The use of warm and contemporary natural materials such as brick, timber and glass to the new build elements are sympathetic and respectful. Sustainable features have been used throughout the design including highly insulated walls, integrated solar protection, exposed thermal mass, natural ventilation, sedum roofs and daylight responsive lights. As a result, the design of the school has been awarded a BREEAM rating of 'Good'.

For further information visit www.clapton.hackney.sch.uk or the architect's website at www.jesticowhiles.com

Judge's Comments

This careful refurbishment and addition of two new buildings creates a teaching environment of immense quality. Here the architects have not been distracted by current design fads but have simply added to the original school in a quiet and understated manner. The result is outstanding.



**Winner of the 2010
People's Choice Award**

For the first time, we invited the people of Hackney to vote for their favourite scheme from the shortlist compiled by the Judging Panel. Clapton Girls' received the most votes with 215 and is the People's Choice winner for 2010. In total, 865 votes were cast.



Winner

Stoke Newington Town Hall

Architect	Hawkins/Brown
Client	Hackney Council
Contractor	Kilby and Gayford Construction Limited
Address	Stoke Newington Church Street, London N16 0JR

The Project

After eighteen months of work to restore this famous local landmark to its former Art Deco glory, Stoke Newington officially opened its doors to the public on 1 February 2010. The Grade II listed building now provides multi-use facilities for weddings, celebrations, schools and travelling theatre, conferences, concerts, exhibitions, tea dances and much more.

Originally separated by an alleyway, a new infill building was created to unite the municipal offices and the Assembly Hall, providing a large reception and a clearly defined entrance. The removal of car parking and the installation of extensive new landscaping and lighting to the front have enabled open and safe access into the complex and physical reconnection to Stoke Newington Church Street.

The Assembly Hall itself was transformed, with the restoration of the original sprung Canadian maple dance floor and mirror ball, one of the largest in Europe. Upstairs, the Council Chamber, for years used as a storeroom, revealed a domed ceiling, walnut panelling and gold corning.

The building has been recognised by BREEAM for its energy efficiency with a 'Very Good' rating.

For more information visit

www.hackney.gov.uk/snth or the architect's website at www.hawkinsbrown.co.uk

Judge's Comments

The decision was taken to fully refurbish and restore this redundant, but much-loved Town Hall to its former glory as Truelove's 'handsome suite of buildings'. Built in the 1930s to a high quality that reflected the civic pride of the time, this listed building is restored with sensitivity and panache. Many original features are brought back to life, including the Australian walnut timber panelling, beautiful plaster-domed ceilings, ornamental gold corning, bronze balustrades, and the sprung Canadian maple dance floor in the Assembly Hall, from which also hangs a spectacular mirror ball.

The Judging Panel were particularly impressed by the redesigned external space. Previously an unattractive tarmac car park with little in the way of disabled access, the new ramps, steps, decorative metalwork, and finishes are extremely well designed and executed with style.

This is a project that delivers the 'wow factor'. It makes you either want to get married, or learn to ballroom dance, just so that you can enjoy the glamour this building provides.



Commended



30 Crown Place

Architect	Horden Cherry Lee Architects
Client	Greycoat Real Estate LLP
Contractor	Skanska
Address	30 Crown Place, London EC2A 4ES

Photography by Alan Williams

The Project

30 Crown Place is a landmark, high-quality office building with an unusual form. It creates a distinctive profile and identifies the commercial tip of southern Hackney. The building design reinforces Crown Place as an important public space and establishes it as significant commercial address in Hackney.

Its form is a direct response to its context, with the diagonal split orientated along Earl Street and facing Exchange Square. The massing relates to heights of adjacent buildings and culminates with the transparent lift core that identifies the main entrance. The soft curves and feathered ends of the oversailing 'screen' facades break down the edges when seen against the sky. The horizontal proportioning provides a delicate scale, in keeping with the area, while the varied fritted pattern emphasises the buildings surface rather than floors.

For more information about the scheme and the architect visit www.hcla.co.uk

Judge's Comments

Crown Place is a landmark building that delivers a strong vision for how tall buildings can make a mark on the skyline and be laid out at ground level to define a positive public realm. The architects have avoided the easy route of a high rise box, applying a mix of elevations, finishes, angles and curves that are a modern take on the ancient street pattern and eclectic mix of surrounding built forms. The subtle coloured glazed panels add interest and lighten the building. Despite its unusual form, the building achieves a commercially viable floor plan that creates a bright, motivating work environment.



Hoxton Overground Station

Architect	Weston Williamson Architects
Client	Transport for London
Contractor	Balfour Beatty + Carillion
Engineer	Scott Wilson
Address	Geffrye Street, London E2 8FF

The Project

One of four new stations created by the East London Line extension, Hoxton station is located to the east of the Geffrye Museum and is accessed via Geffrye Road.

The station has been sensitively designed to fit into and above the refurbished brick arches of the former railway viaduct, with new platforms accessed by lifts and stairs. Retail units are to be inserted into the arches adjacent to the new station entrance.

For more information about the scheme and the architect visit www.westonwilliamson.com

Judge's Comments

This is a station that seems to belong to this area of London. It manages to accommodate all the functional requirements within the existing brick arches that are fitted out with stainless elements reminiscent of a "Donald Judd" sculpture. The elements that don't fit are positioned within stainless steel / glass boxes with stairs and lifts. A very good example of a problem simply solved where normally the end result can be ordinary at best.

Commended



Mare Street Road Improvements

Designer	Hackney Council
Client	Hackney Council
Contractor	Volker Highways
Address	Mare Street, London E8 4RX

The Project

This scheme centred on major street improvements to the stretch of Mare Street between Amhurst Road and Brenthouse Road. Its aim was to reduce the impact of traffic and enhance the public realm by reducing street clutter. Guardrails were removed along with other unnecessary street furniture. Trees were planted, street lighting upgraded and footways widened.

The staggered pedestrian crossings at the Mare Street and Morning Lane junction were removed and replaced with straight-across crossings. The median strip was retained and provides an informal crossing facility. The designers worked with the Council's Waste Services to ensure a waste collection regime was in place to ensure speedy collection of refuse.

The re-design benefits pedestrians, cyclists, and improves road safety and the overall legibility and appearance of the street.

Judge's Comments

This kind of work is difficult and unglamorous but, as this scheme demonstrates, it can make a huge difference to the quality of a place. It has transformed an area where the streets felt cluttered and hazardous into one that feels spacious, calm and civilised. The removal of the pedestrian traffic barriers in particular has not only made the area feel less dangerous, but in its first year has reduced the number of accidents. It is a truly commendable scheme.



39 Parkholme Road

Architect	Macdonald Wright Architects
Client	Tamara Tracz and James Wright
Contractor	Ebcobuild Ltd
Address	39 Parkholme Road, London E8 3AG

The Project

This Victorian terraced house is in the Graham Road and Mapledene Conservation Area. It was restored and remodeled to create a well-designed, simply expressed and flexible home for the changing needs of a growing family. The brief was to create a dwelling with a high level of both design and sustainability. A palette of natural materials including copper, limestone and Douglas fir reinforces the crafted aesthetic. Insulation, passive solar heating and grey water recycling help achieve a level of sustainability comparable to that of a new build home under 2010 Building Regulations. The rear of the house was redesigned to incorporate a terrace, kitchen and dining space. The simple box form of the extension clearly defines the new addition from the original building.

For more information about the scheme and architect visit www.macdonaldwright.com

Judge's Comments

This home is just one in a row of handsome terrace houses; so nothing prepares you for the modern, minimalist look when you enter. The owner-architect has achieved a stark but spacious beauty that reveals the potential of the traditional terrace when imaginative design is applied. The judges were impressed by the way the architect seized the opportunity of stripping it back to its bare bones to introduce state-of-the-art green technologies. These create a building that, despite its age, go well beyond BREEAM Excellent standards – and sets a standard of what's possible through a conscientious renovation.

Commended



Well Street Surgery

Architect	Stock Woolstencroft
Client	Healthlink Investments
Client	Well Street Surgery
Contractor	RNR London Limited
Address	28 Shore Road, London E9 7TA

Photography by Morley von Sternberg

The Project

The new Well Street Surgery is located on the site of a Victorian textile factory and provides a 'one stop shop' for primary healthcare in Hackney. The refurbished steel framed factory at the rear houses the principal clinical accommodation while waiting areas, circulation spaces and reception are set in a new building facing Shore Road. The design involved extensive consultation with the medical staff to ensure the new surgery met their specific requirements. The facilities include accommodation for 15 GPs, a minor surgery clinic, a multi-purpose community room, seminar room and a staff lounge and terrace. The new surgery provides a high quality, fresh, light environment for patients and staff. Externally, the building presents a bold civic identity denoting its public status and function through a striking elevation.

For more information about the scheme and the architect visit www.stockwool.net

Judge's Comments

There is much to praise about this scheme. It transforms a redundant Victorian factory into a very valuable community facility. While the front is a new build, the old factory was retained as it provided a sensible layout for the many consulting rooms needed. The building is light and airy and given that it has a large and deep floor plate, this is quite an achievement. The common areas are relaxing, colourful, friendly and yet very functional. It represents excellent value for money and meets its objectives in spades. Wouldn't it be nice if all doctors' surgeries were this good!

Shortlisted



Photography by Peter Durant

Clapton Library

Architect	Shepherd Epstein Hunter
Client	Hackney Council
Contractor	Total Constructions Ltd

For more information about the library visit www.hackney.gov.uk/cl-clapton-main or the architect's website at www.seh.co.uk



Photography by Will Pryce

Mountside Walk, Leaside Road

Architect	Waugh Thistleton Architects
Client	Metropolitan Housing Trust
Address	Leaside Road, London E5 9LU

For more information about the scheme and architect visit www.waughthistleton.com

Shortlisted



Milton Gardens Youth Centre

Architect	Matthew Lloyd Architects LLP
Client	The Learning Trust
Client	Hackney Council
Contractor	T&B Contractors
Address	Shakespeare Walk, London N16 8TT

For more information about Hackney's youth centres visit www.hackney.gov.uk/myplace or for more information about the scheme, visit the architect's website at www.matthewlloyd.co.uk



Photography by Tim Soar

Shoreditch Rooms, Shoreditch House

Architect	Archer Architects
Client	Derwent London plc
Client	Shoreditch House
Contractor	Knight Harwood
Address	Ebor Street, London E1 6AW

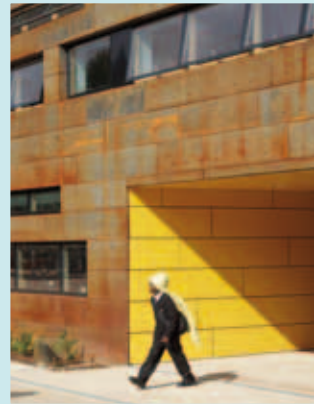
For more information about the scheme and the architect visit www.archerarchitects.com



SoDa Studios

Architect	Thinking Space
Client	Investland
Contractor	i-Build Construction Limited
Address	260-268 Kingsland Road/ Dunston Street, London E84DG

For more information about the scheme and architect visit www.thinkingspace.co.uk



Photography by Tim Crocker

Stoke Newington School and Sixth Form: Media Arts and Science College

Architect	Jestico + Whiles
Client	Hackney Council
Client	Stoke Newington School
Contractor	Willmott Dixon Group
Address	Clissold Road, London N16 9EX

For further information visit the school's website at www.sns.hackney.sch.uk or the architect's website at www.jesticowhiles.com

Past Winners, Commendations and Mentions

2004

Winners:

Daubeney Primary School
Kinnear Landscape Architects and Hattie
Coppard, Snug and Outdoor

Hackney Empire
Tim Ronalds Architects

In Between
Annalie Riches, Silvia Ullmayer and
Barti Garibaldo

King's Wharf
Stephen Davy Peter Smith Architects

Mossbourne Community Academy
Richard Rogers Partnership

The New Summerhouse
Ullmayer, Sylvester Architects

2006

Winners:

The Rooftop Nursery
WHAT architecture

Brook Community Primary School
Sall, Cullinan and Buck Architecture (SCABAL)

103 Greenwood Road
Lynch Architects

17 Rowe Lane
Marcus Lee of FLACQ

Amnesty International UK Human
Rights Action Centre
Witherford Watson Mann Architects
and Gregori Chiarotti Architects

Nile Street
Munkenbeck and Marshall Architects

115–117 Church Walk
Buschow Henley

Commendations for contributing to Conservation in Hackney:

Clapton Portico
Brady Mallalieu

Shoreditch Town Hall
Thomas Ford and Partners and Niall Phillips
Architects

Mention:

Parkwood Primary School
The Facility

2008

Winners:

Adelaide Wharf
Alford Hall Monaghan Morris Architects

Hothouse
Ash Sakula Architects

Lau Sun House
Kyson Design Limited

Shoreditch Prototype House
Cox Bulleid Architects

Commended:

Rivington Place
Adjaye Associates Limited

St. John at Hackney Churchyard Gardens
Land Use Consultants

Mentions:

Gainsborough Children's Centre
Meadowcroft Griffin Architects Limited

Hackney City Farm Environmental Resource Centre
Mass Architecture

2 Hillman Street
Hawkins/Brown

Sunken House
Adjaye Associates Limited



For more information on the 2010 and previous Hackney Design Awards go to: www.hackney.gov.uk/designawards

