

# Strategic Policy & Research

Randal Smith

Strategic Policy & Research

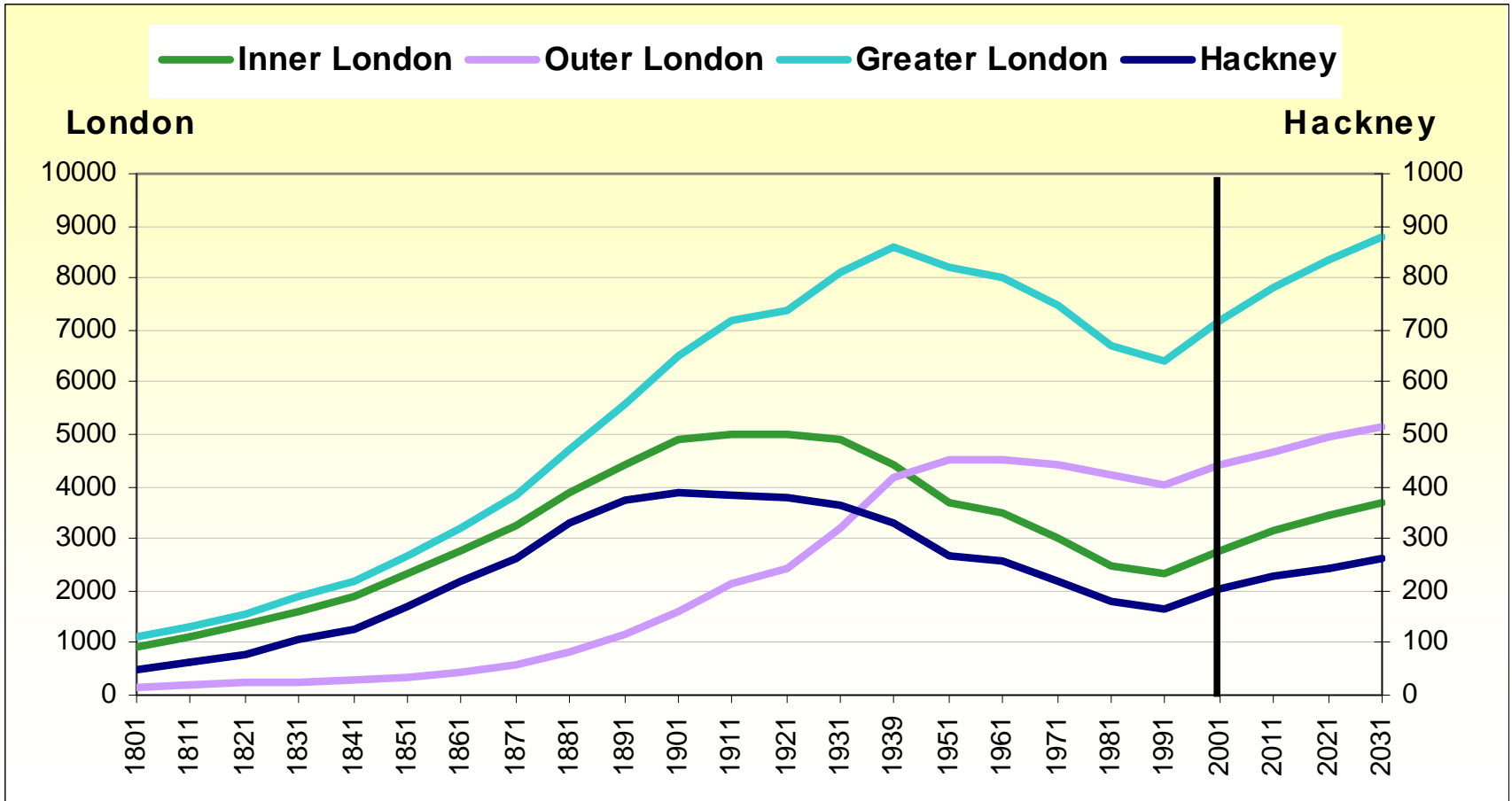
# Our role

- The Sustainable Community Strategy
- Leading on key strategies and assessments
- Promoting the use of evidence in policy and decision making
- Supporting excellent research across the Council

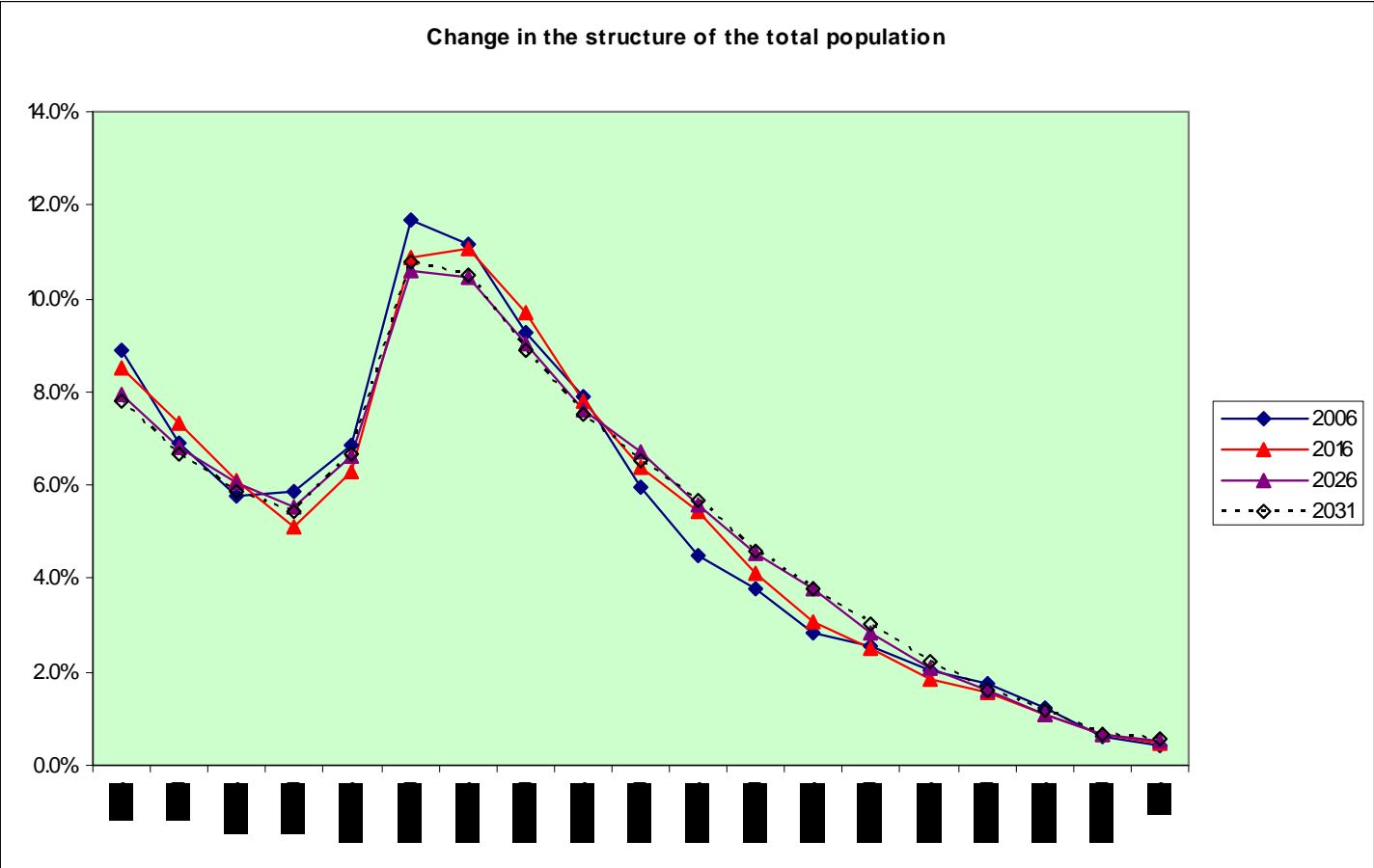
# Our tools

- **Research Strategy**
  - Critique, challenge and alignment
  - Research for impact's sake
- **HackneyMatters e-panel**
  - Online surveys, focus groups and annual events
- **E-library**
  - Sharing our knowledge
- **Key research work**
  - 2009 Evidence Pack
  - 2007 Trend Pack

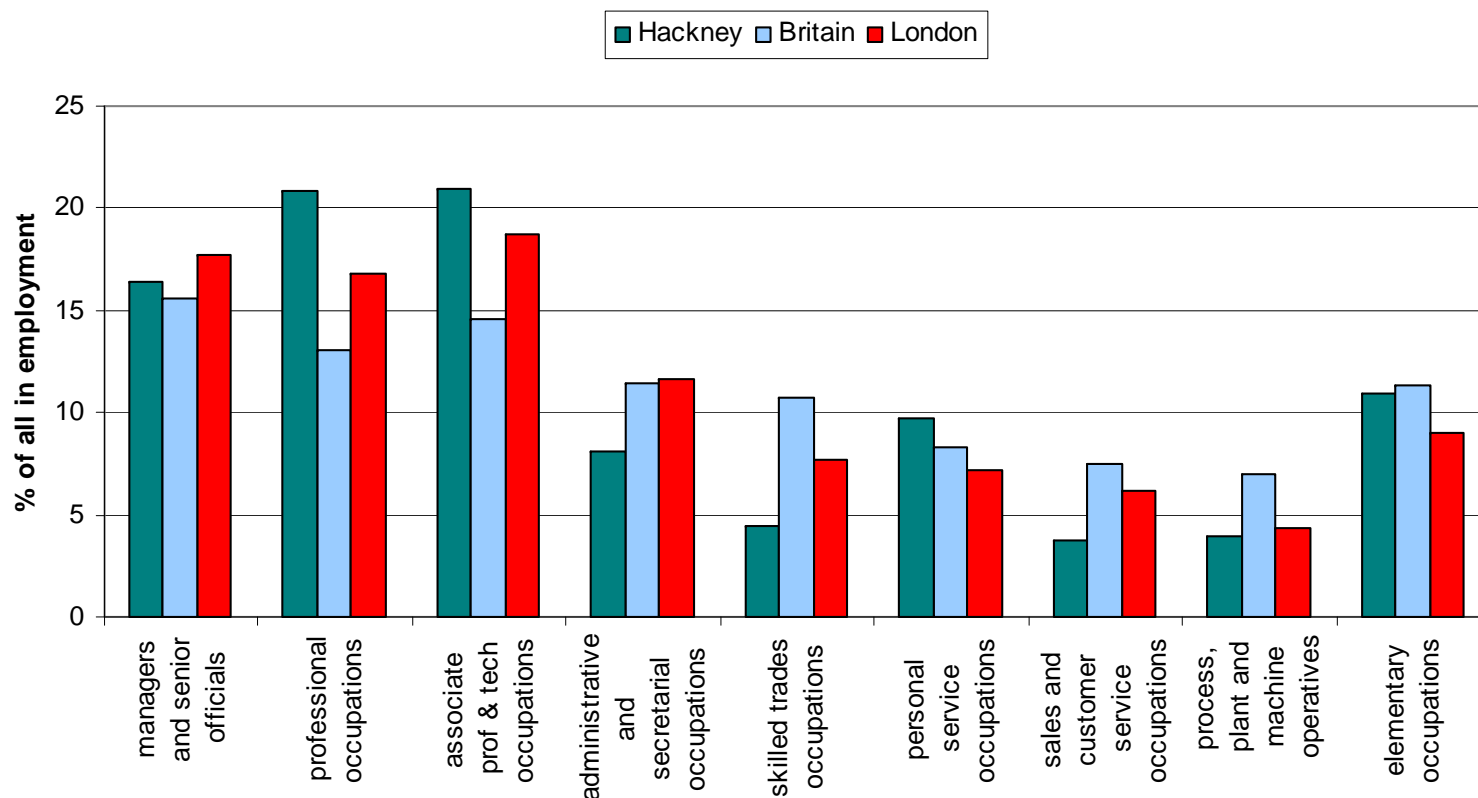
# Population of Hackney & London 1801 - 2031



# Age Structure - All Population



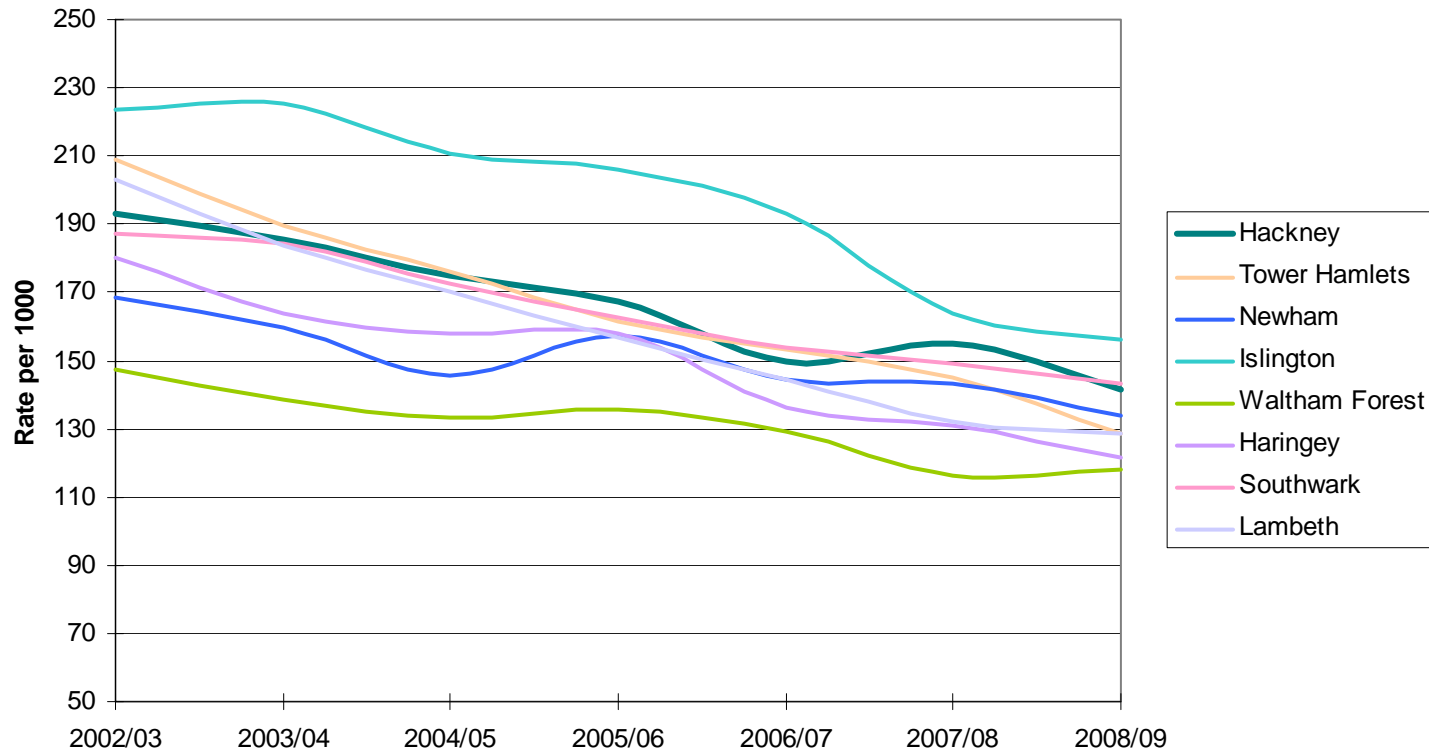
# Hackney's Economy – Occupations of Residents



Source: Annual Population Survey – resident analysis (Mar 2008 – Apr 2009)

# Crime in Hackney

## Overall crime in Hackney and selected London Boroughs

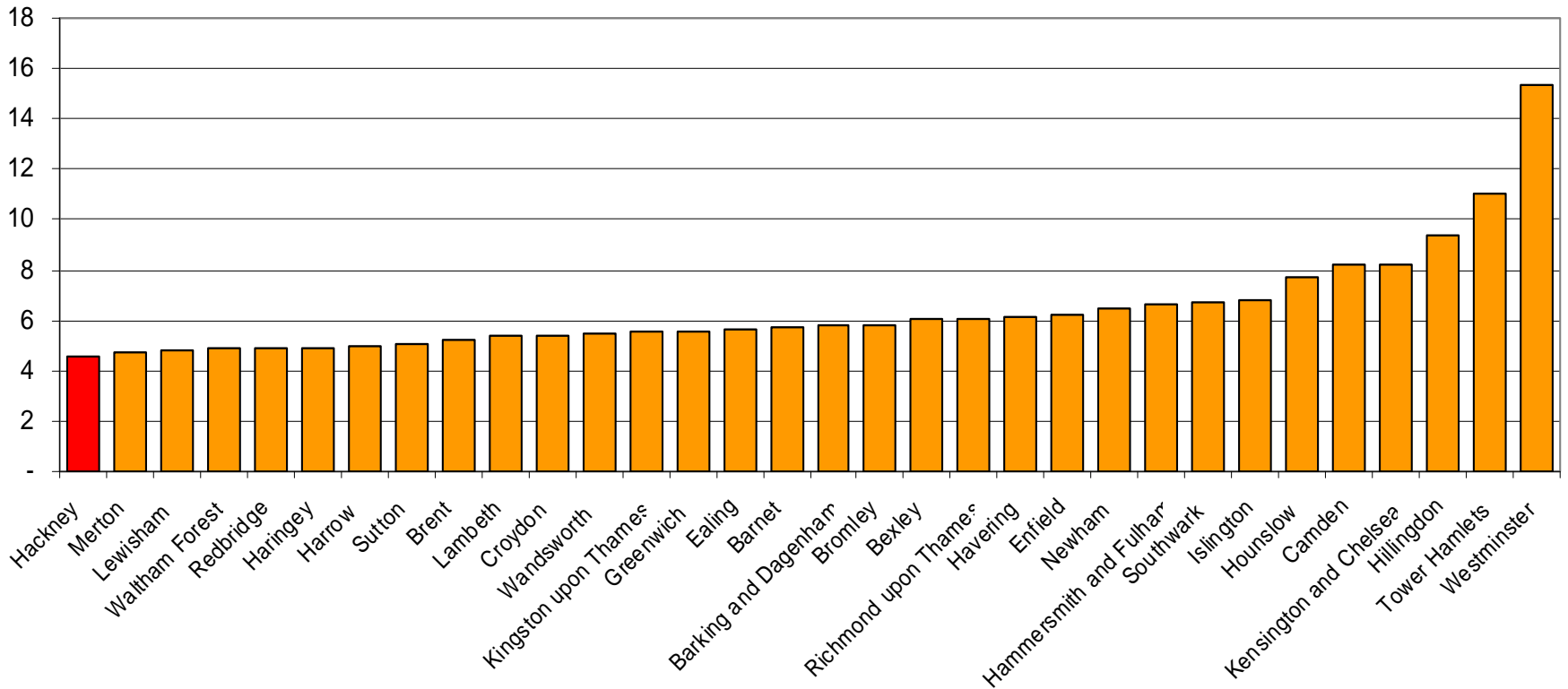


Source: Home Office Statistics



# Sustainability

Per Capita CO2 Emissions 2006

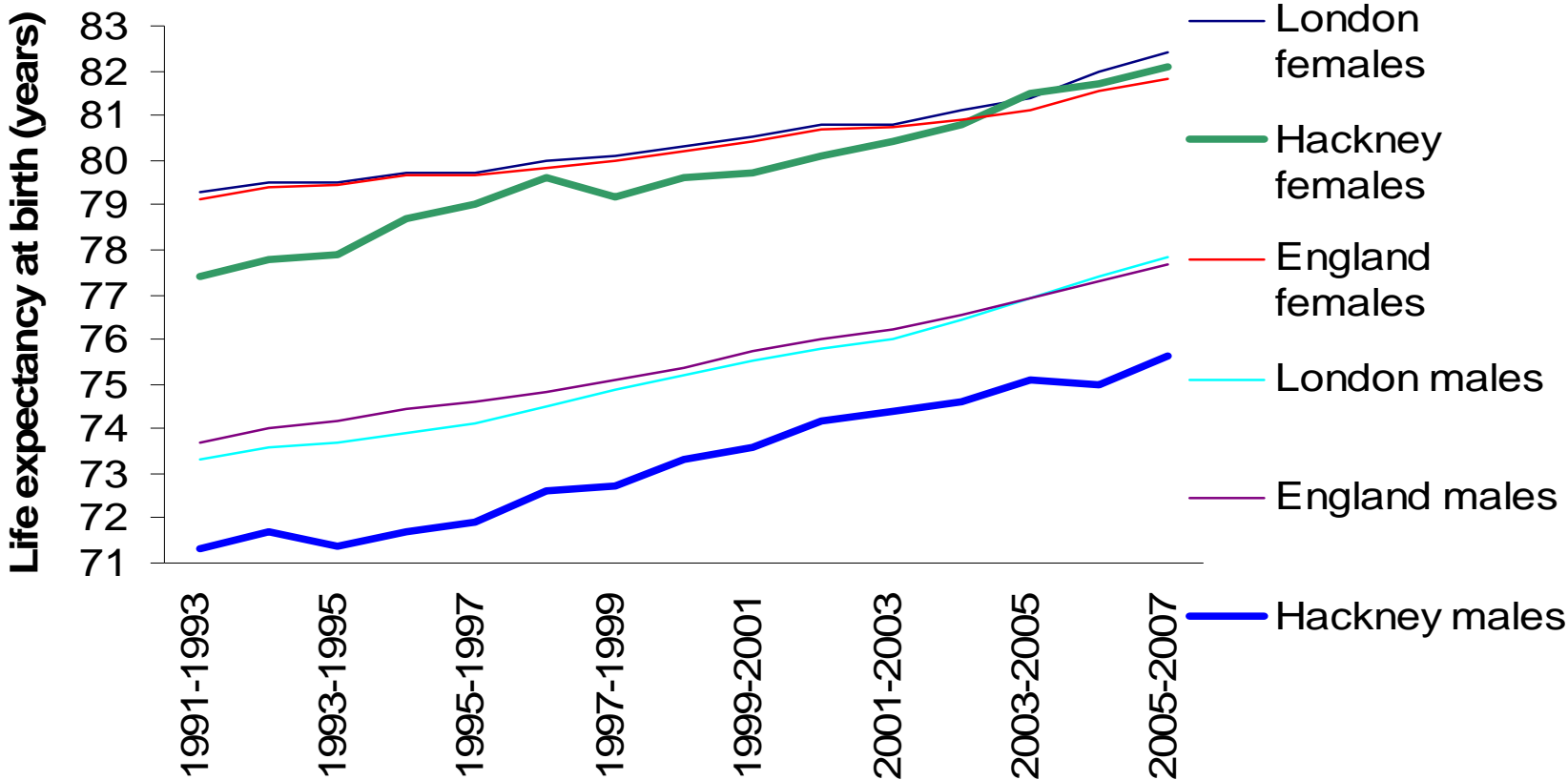


Source: Defra



# Life expectancy - inequality for men

Male and female life expectancy, 1991-03 to 2005-07

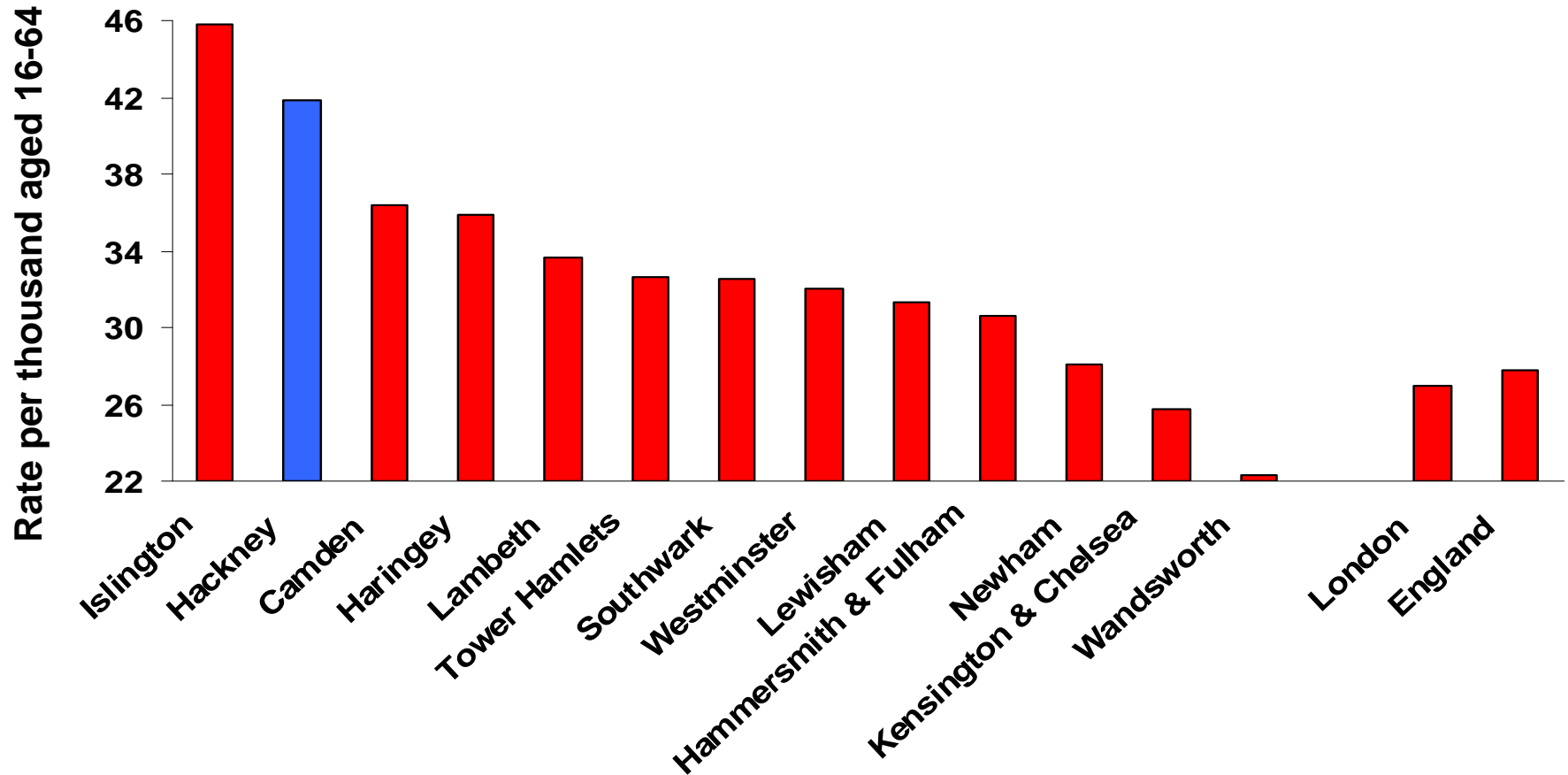


Source: Association of Public Health Observatories, 2007



# Mental illness preventing employment

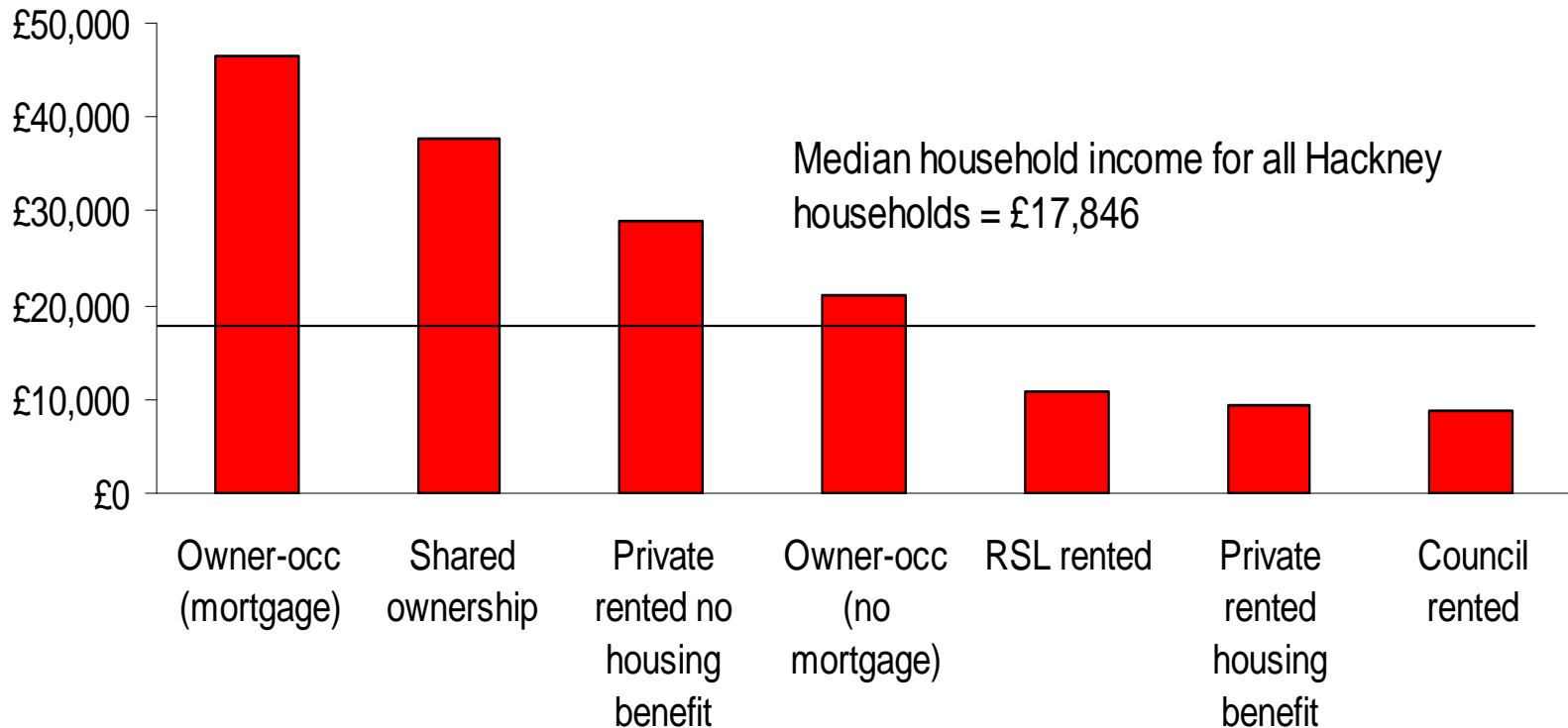
Working age people in receipt of incapacity benefit or severe disablement allowance for mental health conditions, rate per thousand working age population.



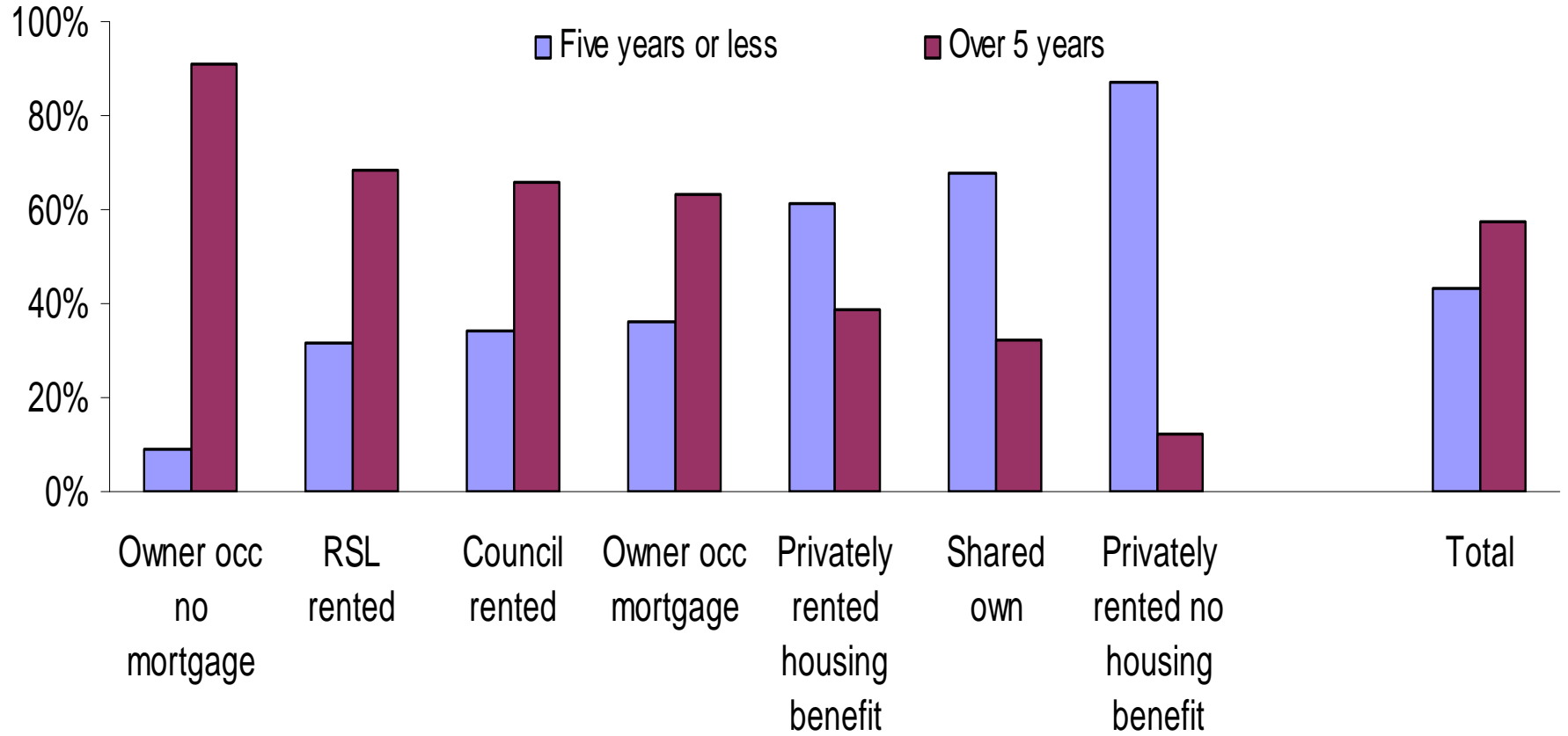
Source: Association of Public Health Observatories, 2007

# Forms of home ownership may be out of reach for the many

Median gross household income of Hackney households, by tenure type



# Length of residency



Source: Hackney Housing Needs Survey, 2008

