



# Children and Young People

# Children and Young People

More than a quarter of the people living in Hackney are under 20 years old. Hackney's 56,100 children and young people come from a rich diversity of backgrounds and, as a group, are more ethnically diverse than the borough's population in general.<sup>1</sup>

A disproportionate number of Hackney's young people share similar characteristics and experiences which place them at a disadvantage compared with their peers living in other areas - 37 per cent of young people are affected by deprivation as a result of living in households dependent on benefits, while 46 per cent of under 20s live in overcrowded households.<sup>2</sup> One third of households with children are single parent families.

The rate of improvement in the percentage of school pupils in Hackney who achieve 5 good GCSE's including English and maths has been faster than the national rate of improvement. Between 2006 and 2009 the proportion of Hackney pupils achieving 5 A\*-C grades at GCSE including English and maths increased by over 15 percentage points - compared to a national increase of 4% . The percentage of school pupils in Hackney who achieve 5 good GCSE's including English and maths is now higher than for England overall. In 2009, 52.2 per cent of 16 year olds in Hackney achieved 5 or more GCSE grades of A\*-C including Maths and English compared with 49.8 per cent in England overall. 18 per cent of 18 year olds who attended school in Hackney went on to higher education in 2007/08, 8 per cent below the rate for London and 3 per cent below the rate for England.

---

<sup>1</sup> There is a full Children and Young People's Needs Assessment that provides a more comprehensive coverage data and information regarding the children and young people in Hackney and their needs. It can be found here: <http://www.hackney.gov.uk/cyps-needs-assessment.htm>

<sup>2</sup> The standard of overcrowding used in the Census. It is based on a calculation of how many rooms are needed for that household, taking into account its size and composition. Any household lacking one or more rooms compared to the calculation would be defined as overcrowded. It assumes that every household; including one person households; requires a minimum of two common rooms (excluding bathrooms).

# Children and Young People

## General Population Statistics

Around 26 per cent of Hackney residents (56,100 people) are under the age of 20, compared with 24 per cent in London and England.<sup>3</sup>

In 2001, the percentage of family households in the borough with dependent children (see Table 1) was above the London and national averages. A higher proportion of these dependants are in single parent families. A third of Hackney's households with dependent children are headed by a lone parent; seven percentage points higher than in London as a whole and 11 percentage points more than in England & Wales.

**Table 1: Percentage of Family Households with dependent children**

	Families with no dependent children	Families with 1 dependent child	Families with 2 or more dependent children	% of households with dependent children that are lone parent households
Hackney	44%	24%	32%	33%
London	52%	21%	27%	26%
England and Wales	57%	18%	25%	22%

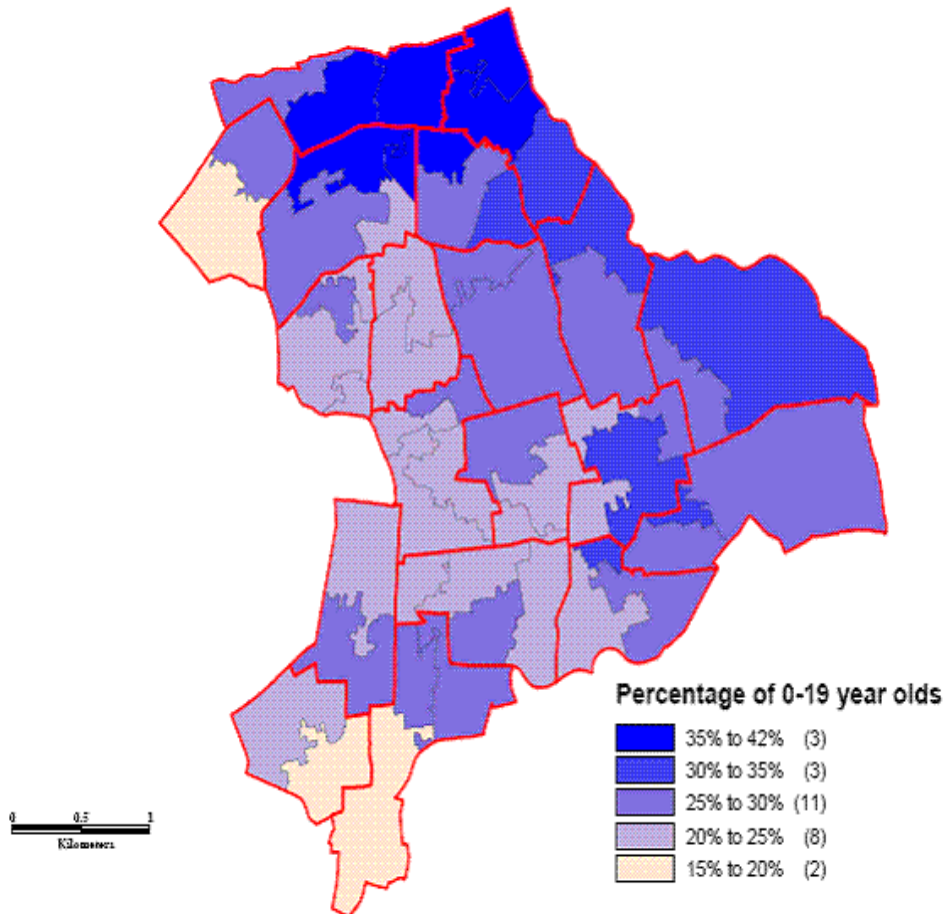
Source: Census 2001

Geographically, the population of young people is unevenly distributed throughout the borough. The areas with the largest concentrations of 0-19 year olds are in the wards towards the north and east - in New River, Springfield and Kings Park (Figure 1). Another area of high concentration is Chatham ward. Conversely, there are lower percentages of young people in the west of Hackney.

<sup>3</sup> ONS, 2008

# Children and Young People

**Figure 1: Population Density of 0 to 19 year olds**



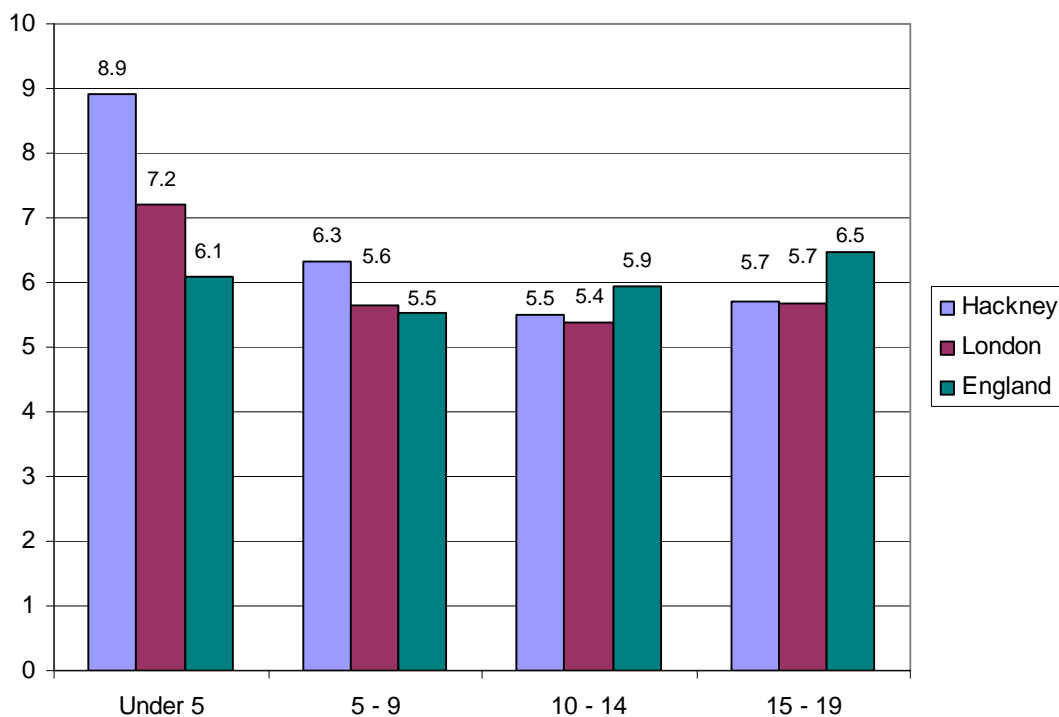
Source: London Borough of Hackney based on mid year ONS population estimates 2008

# Children and Young People

## Age Distribution

There are 18,900 children under five in the borough, making this, at 8.9 per cent of the total population in 2008, the largest age group among the under-20s. This proportion exceeds the national average by 2.8 percentage points (see Figure 2). Among the older age bands the gap between Hackney and other areas is smaller. England has 0.4 percentage points more 10-14 year olds and an equal proportion of 15-19 year olds. Overall, a larger proportion of Hackney's population is aged under 20 than in London as a whole.

**Figure 2: Population under 20 as percentage of total population**



Source: ONS, 2008

# Children and Young People

## Ethnicity

Young people in Hackney are more ethnically diverse than the borough's overall population. Over half belong to black and minority ethnic groups. The White population is the single largest group in the area making up 43.5 per cent of the under 20s, a proportion 15.2 percentage points lower than that found in the general population. 56.5 per cent of young people belong to ethnic minority groups, with 35.8 per cent being Black African, Black Caribbean or Black British. It is estimated that 13.3% of the under 20s are Charedi Jewish, which are likely to be included in the 'White' ethnic group.<sup>4</sup>

**Table 2: Ethnic profile of people aged 0-19 compared with the general population of Hackney**

Ethnicity	Young People	Total Hackney Population
White	43.5%	58.7%
Black African	17.0%	12.0%
Black Caribbean	8.1%	8.9%
Black Other	10.7%	5.3%
Other	6.7%	4.4%
Indian	3.6%	3.6%
Bangladeshi	5.6%	3.2%
Other Asian	2.7%	1.8%
Chinese	0.9%	1.3%
Pakistani	1.1%	0.8%

Source: GLA population projections, 2009

Hackney's pupils are less likely to speak English as their first language than children England generally; however the rate in Hackney is very similar to that of Inner London. Not having English a first language can be an educational disadvantage particularly in the early years of schooling. According to the DCSF, 55% of primary school pupils and 45% of secondary school pupils do not have English as their first language.

<sup>4</sup> Mayhew, 2007, 'Estimating and Profiling Hackney's Population', compared to GLA 2008 population projections.

# Children and Young People

**Table 3: Percentage of pupils whose first language is known or believed to be other than English**

	Primary School	Secondary School
Camden	60%	47%
<b>Hackney</b>	<b>55%</b>	<b>45%</b>
Hammersmith and Fulham	48%	41%
Haringey	53%	47%
Islington	42%	47%
Kensington and Chelsea	54%	49%
Lambeth	48%	40%
Lewisham	32%	24%
Newham	73%	67%
Southwark	40%	42%
Tower Hamlets	78%	70%
Wandsworth	43%	38%
Westminster	70%	61%
England	15%	11%
Inner London	54%	49%
London	43%	36%

Source: DCSF (January 2009)

Table 4 shows the percentage of pupils in Hackney who achieved five A\*-C grades at GCSE, including English and Maths in 2008. The group with the highest achievement were Bangladeshi pupils, with almost 57% per cent achieving this level. In contrast, Caribbean (26.9%) and Turkish or Kurdish speaking (29.6%) pupils had the lowest overall percentages. On a national level in 2008, Indian pupils were the highest achieving group, with Bangladeshi pupils reporting lower attainment.<sup>5</sup> The difference in Hackney, where Indian pupils were outperformed by Bangladeshi and a number of other ethnic groups may be down to small numbers of Indian (61) and Bangladeshi (67) pupils taking their GCSEs at this time.

<sup>5</sup> DCSF

# Children and Young People

**Table 4: Percentage achieving 5 A\* - C grades including English and Maths at GCSE, by ethnicity**

	<b>2008 Performance</b>	<b>Total number of pupils in cohort</b>
African	38.4%	242
Bangladeshi	56.7%	67
Caribbean	26.9%	171
Indian	39.3%	61
Turkish or Kurdish speaking	29.6%	108
Mixed heritage	40.2%	92
All other ethnic groups	56.3%	256
<b>Hackney average</b>	<b>42.6%</b>	
<b>England average</b>	<b>47.6%</b>	

Source: *The Learning Trust (2008)*

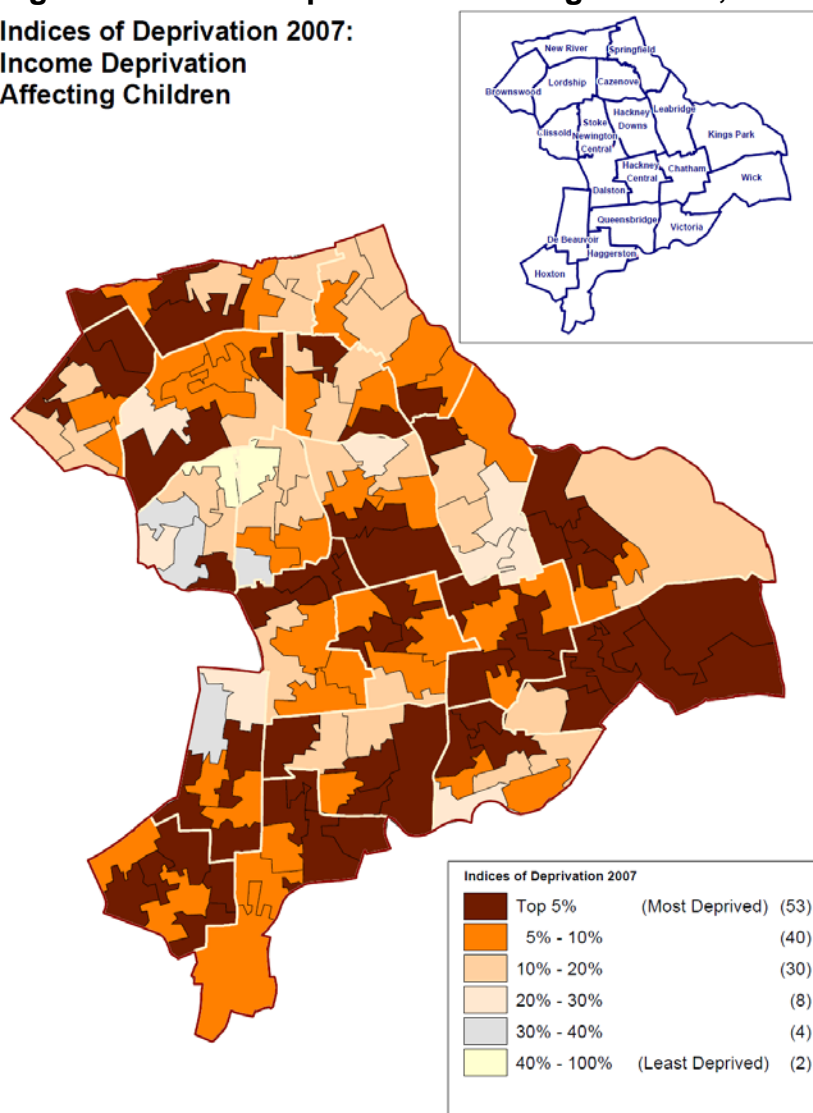
'All other ethnic groups' includes English, Scottish and Welsh students, and is both the largest and highest performing group on the table.

## Economic Deprivation

Income deprivation affecting children (i.e. those children under 16 years of age and living in families who are in receipt of income benefits) is shown in Figure 3. 93 of Hackney's 137 (68 per cent) super output areas (SOAs – a geographical area with on average 1500 residents) are among the ten per cent most deprived areas in the whole of England. The wards of Hackney Downs, Hackney Wick, Chatham, Queensbridge and Hoxton are especially deprived, with large areas ranking among the top five per cent nationally.

**Figure 3: Income Deprivation affecting children; national comparison**

**Indices of Deprivation 2007:  
Income Deprivation  
Affecting Children**

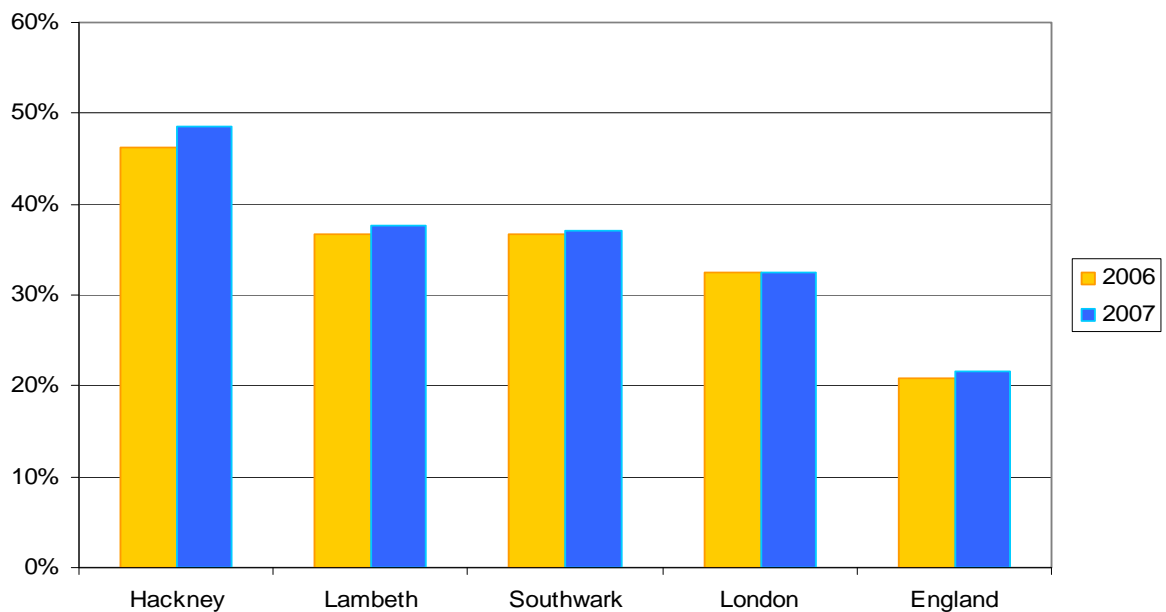


Source: London Borough of Hackney based on Index of Multiple Deprivation 2007

# Children and Young People

The proportion of children living in families in receipt of out of work benefits or tax credits where their reported income is less than 60% median income is much higher in Hackney than in other parts of the country (Figure 4). It is almost twice the percentage of young people in England and 16 percentage points more than in London overall, ranking as the second highest in London after Tower Hamlets. In line with the trend nationally and with local comparators, child poverty in Hackney increased between 2006 and 2007.

**Figure 4: Proportion of children in poverty**



Source: HMRC

Note: Graph shows the proportion of children living in families in receipt of out of work benefits or tax credits where their reported income is less than 60% median income

Overcrowding affects 35 percent of Hackney's population but the problem is even more acute among Hackney's children and young residents. More than half of 16-19 year olds live in homes with too few rooms (Table 5). Overall, 46 percent of under 20s are in overcrowded accommodation, a much higher figure than the London and England averages.

# Children and Young People

**Table 5: Children and Young People in overcrowded households (one or more rooms too few)**

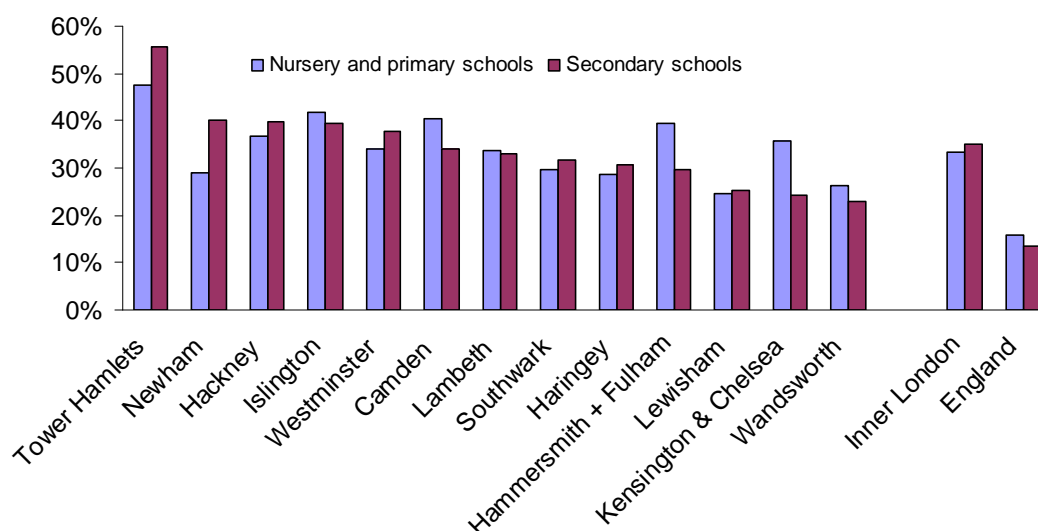
	People in overcrowded households		0 to 4 years	5 to 15 years	16 to 17 years	18 to 19 years	Under 20s
	number	%	%	%	%	%	%
Hackney	70657	35	46	45	54	51	46
London	1506389	21	28	28	35	33	29
England	4290369	9	12	12	18	17	13

Source: Census 2001

The Hackney Housing Needs Survey of 2008 showed that 22% of all households with children were overcrowded. The distribution of overcrowding in Hackney varies, with households in Haggerston, Brownswood and New River wards experienced the highest levels of overcrowding, and Stoke Newington, Clissold and Leabridge the lowest.<sup>6</sup>

Another indicator used to measure deprivation is eligibility for free school meals<sup>7</sup>. Hackney has one of the highest eligibility rates to free school meals in London; with 37% of primary and nursery school pupils and 40% of secondary school pupils eligible. These rates are above those of Inner London, and far higher than rates for England overall.

**Figure 5: Proportion of pupils eligible for free school meals, by school stage**



Source: DCSF, January 2009

<sup>6</sup> Census, 2001. This data applies to all households, not only those with children.

<sup>7</sup> To be eligible for free school meals their parent(s) must be entitled to one or more income related benefit.

## Education

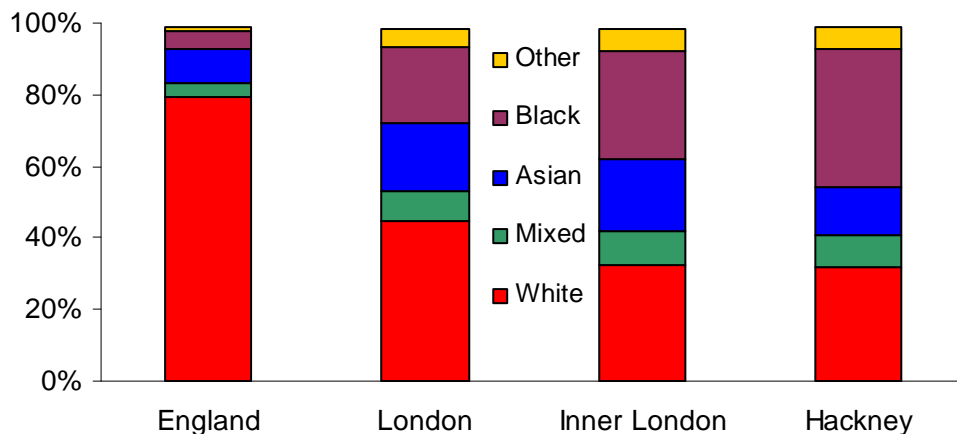
A total of 32,920 children attend schools in Hackney. This figure comprises the whole range of schooling available in the borough: nursery, primary, secondary, special schools, pupil referral units, academies and independent schools. 23,943 pupils attend maintained primary and secondary schools in Hackney, 6,579 go to independent schools, and 1,873 go to the relevantly recently established Academy Schools<sup>8</sup>.

## Primary Schools

Maintained primary schools in Hackney are attended by 17,748 children.<sup>9</sup> In addition, 4,700 children aged 4-11 attend Independent Schools.

Of the children in Hackney who are of primary school age, 88.7% are schooled in Hackney maintained schools.

**Figure 6: Primary school pupils by ethnicity**



Source: DCSF, January 2009

Black children constitute the largest ethnic group within Hackney maintained primary schools representing 39 per cent of the pupil population and exceeding the Inner London average by 9 percentage points (see Figure 6). This is followed by White pupils who make up 32 per cent of students in the borough while Mixed, Asian and Other ethnicities each constitute less than 15 per cent.

<sup>8</sup> DCSF, January 2009

<sup>9</sup> DCSF, January 2009

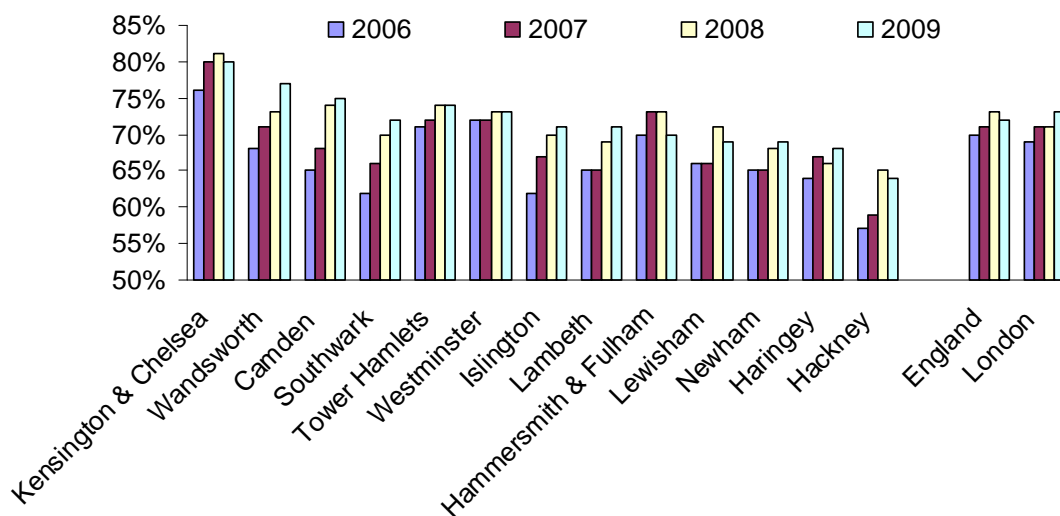
# Children and Young People

Key stage 2 results are a measure of primary school performance and show the educational achievement of eleven year olds in the last year of their primary school education.

The proportion of Hackney pupils achieving at least level 4 in English and Mathematics at Key Stage 2 rose from 57% in 2006 to 64% in 2009. This is a larger increase than in London and England generally.

However, in each of the last four years, and for estimates for 2009, Hackney has reported the lowest proportion of children achieving level 4 English and Maths of all London Boroughs. At an estimated 64% for 2009, the proportion of children in Hackney achieving level 4 is 8% below Southwark and 7% below Lambeth, the boroughs with the most similar demographic characteristics. The 2009 performance in Hackney is 1% lower than in 2008.

**Figure 7: Percent of pupils achieving at least level 4 English and Mathematics at Key Stage 2**



Source: Government Office for London

# Children and Young People

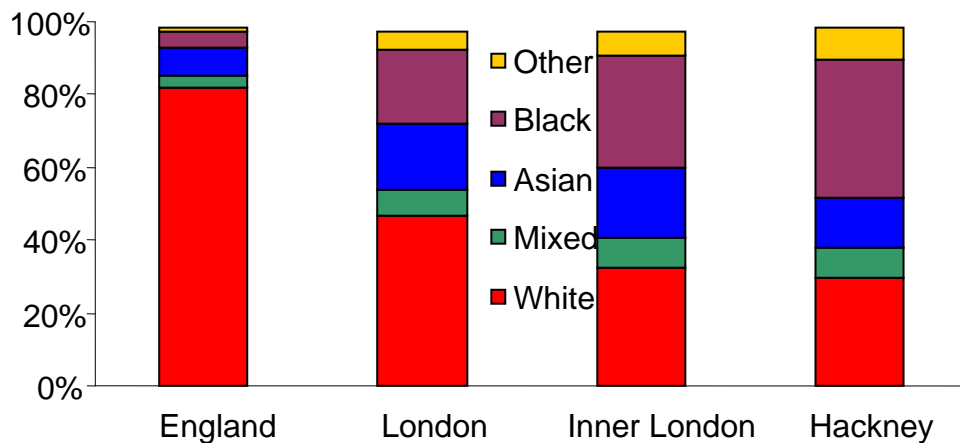
## Secondary Schools

There are 6,195 students in Hackney's maintained secondary schools, 1,873 in the borough's Academies<sup>10</sup>, and a further 1,070 aged 12-16 in Independent schools<sup>11</sup>.

Of the children in Hackney who are of secondary school age, 61.3% are schooled in Hackney maintained schools.

The ethnic make up of the secondary school population (Figure 8) is similar to that of primary schools; Black pupils again constitute the largest ethnic group, followed by White students. The populations of Mixed heritage, Asian and Other pupils were again much smaller.

**Figure 8: Secondary School pupils by ethnicity**



Source: DfES (2004)

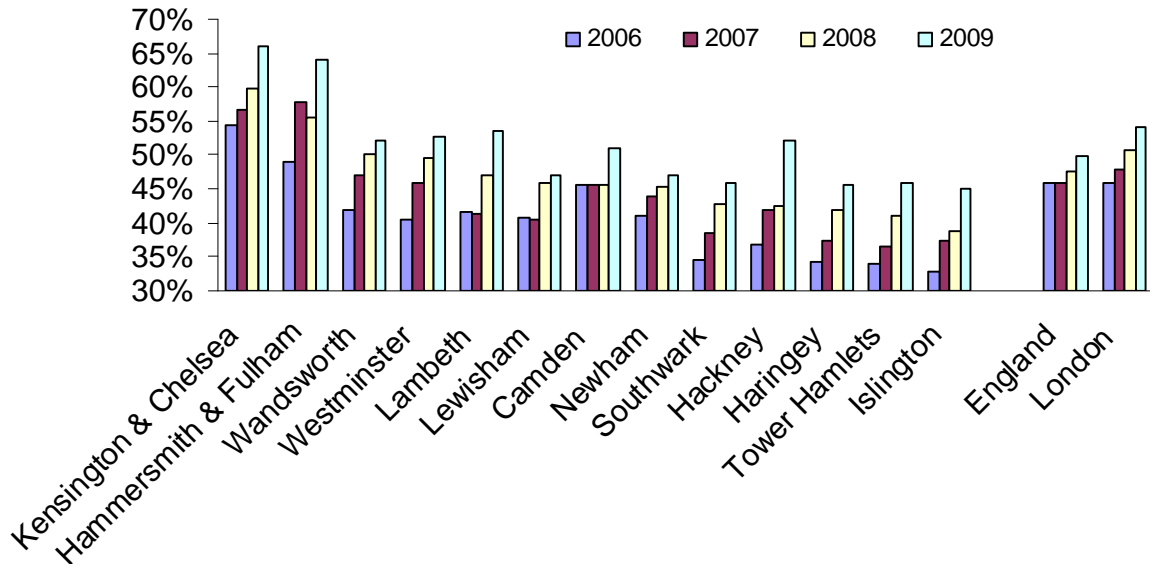
The proportion of Hackney pupils achieving 5 or more grades of A\*-C including Maths and English at Key Stage 4, increased from 36.7% in 2006 to 52.2% in 2009. This was a faster rate of improvement than London and England saw over this period, and Hackney's rate is now above the national average, and less than two percentage points below the London average.

<sup>10</sup> DCSF, January 2009

<sup>11</sup> DCSF, 2009

# Children and Young People

**Figure 9: Proportion of pupils at end of KS4 achieving 5 GCSEs including Maths and English at grade A\* - C in maintained schools**



Source: Government Office for London

## School Leavers and Further Education

More than four out of five of Hackney's school leavers continued into full time further education in 2008 (see Table 6). This was below the London rate but similar to that of England.

Of those not entering further education, Hackney school leavers were less likely to enter Government supported training or employment with or without training than those in London and England generally. However, 82% of school leavers continued to full time education. Just over 5% of school leavers in Hackney went into voluntary work, part time work or study, or were unemployed. 1.3% went into employment, and over 8% moved away or could not be contacted.

# Children and Young People

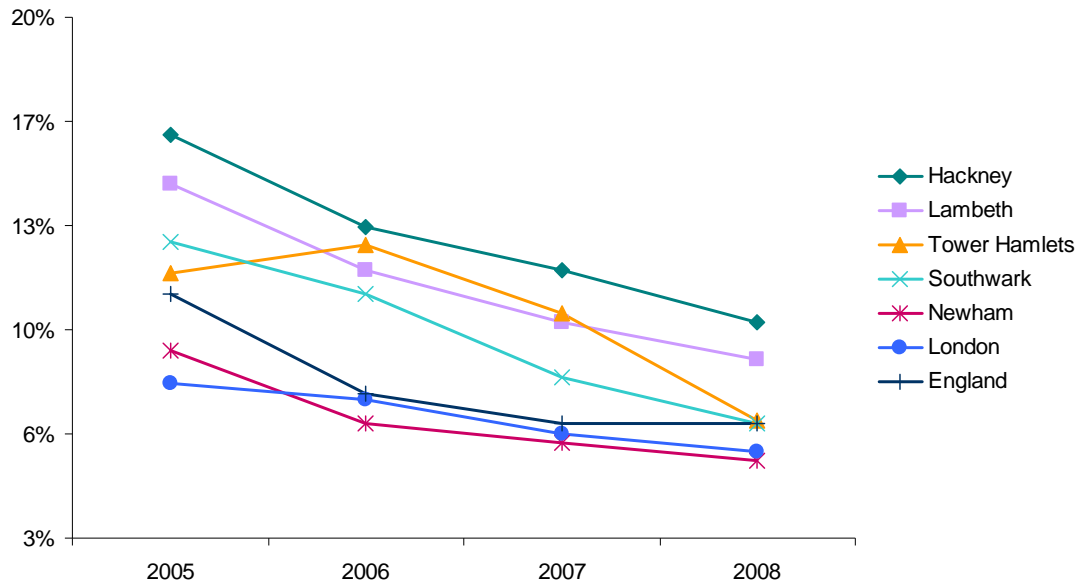
**Table 6: Destination of school leavers (age 15/16), 2008**

Destination	Hackney	London	England
Full time education	82.0%	87.8%	82.3%
Government Supported training	1.8%	2.7%	5.7%
Employment with training	1.0%	1.2%	2.5%
Employment without training	0.3%	0.7%	1.6%
Voluntary work / part time learning or employment/ unemployed and available to work	5.1%	3.8%	5.2%
Unavailable to work	1.6%	0.7%	0.7%
Moved away	3.2%	1.1%	0.9%
No response	5.1%	2.0%	1.2%

Source: London East Connexions Partnership (2008)

Between 2005 and 2008, the proportion of Hackney 16-18 year olds not in employment, education or training (NEET) fell from 16% to 10%. However, despite this fall Hackney continued to report the highest rate in Inner London.

**Figure 10: Percentage of 16-18 year olds not in employment, education or training (NEET)**



Source: Government Office for London

Table 7 shows the further education establishments that young people from Hackney attended in the 2007/08 academic year. All establishments with 10 or more pupils registering their home borough as Hackney are shown in the

# Children and Young People

table. Hackney's Community College and Brooke House Sixth Form College were attended by 1274 young people residing in the borough. Colleges outside Hackney catered for a greater number, with pupils attending establishments in boroughs across London.

**Table 7: Hackney pupils' further education provider, 2007/08 academic year**

Institution	Total Hackney pupils aged 16-18	Institution	Total Hackney pupils aged 16-18
City And Islington College, Islington	827	Manchester College Of Arts And Technology (Mancat) Ealing, Hammersmith And West London College	45
Hackney Community College	728	Barnet College	37
Brooke House Sixth Form College, Hackney	546	Enfield College	37
College Of North East London, Tottenham	397	Redbridge College	37
Leyton Sixth Form College	225	Woodhouse College, Finchley	32
Sir George Monoux Sixth Form College, Walthamstow	218	Barking College	27
Westminster Kingsway College	158	St Charles Catholic Sixth Form College, North Kensington	22
Waltham Forest College	103	Merton College	20
City Of Westminster College	90	Havering College Of Further And Higher Education	17
Tower Hamlets College	90	Newham Sixth Form College	16
Epping Forest College	73	St Francis Xavier Sixth Form College, Wandsworth	12
Southgate College	61	Greenwich Community College	11
Newham College Of Further Education	54	Lewisham College	11
Southwark College	49		
		<b>Total pupils</b>	<b>4118</b>

Source: The Data Service, 2007/08

Table 8 shows the proportion of pupils who were studying in Hackney schools at age 15 who went on to higher education, compared to those who attended schools in London and England. In 2007/08, 18% of Hackney-schooled 18 year olds entered higher education at age 18, a lower proportion than pupils

# Children and Young People

attending schools in London and England. The Hackney rates of participation at age 19 and at 17-20 overall were below those of London but above those of England.

**Table 8: Higher education initial participation rate at ages 17-20, academic year 2007/08**

Age	Hackney	London	England
18	18%	26%	21%
19	16%	17%	10%
17-20	42%	49%	34%

*Source: Higher Education Statistics Agency/ Department for Innovation*

The government set a target in 2007 to increase participation in higher education up to 50 percent among 18-30 year olds by the end of the decade.<sup>12</sup>

<sup>12</sup> Comprehensive Spending Review 2007

## Social Welfare

A total of 325 children were 'looked after'<sup>13</sup> by the London Borough of Hackney in 2009 (Table 9). Over three quarters were from either Black or White ethnic groups (81 percent) while 12 percent came from mixed ethnic backgrounds. Only a small number belong to Asian and other ethnic groups. The largest single group is Black or Black British children, who account for 45 percent of those in care. Compared with the ethnic breakdown of Hackney's young population, relatively more Black children and fewer White children are looked after by the borough.

**Table 9: Children looked after at 31 March 2009 by ethnic origin**

Ethnic origin	Number of children	Ethnic composition of children looked after	Ethnic composition of population aged 0-15
Asian or Asian British	10	3%	11.5%
Black or Black British	150	45%	24.1%
Mixed	40	12%	8.9%
White	120	36%	53.4%
Other ethnic groups	10	3%	2.4%
All children	325		

Source: DCSF, ONS Mid Year Estimates 2007

Note: figures are rounded to the nearest 5

In 2008/09, 220 children living in Hackney who were not looked after were the subject of a Child Protection Plan,<sup>14</sup> for children who are not being looked after, which assesses the likelihood of the child suffering harm and look at ways that the child can be protected. The most common reason for registration was neglect.

<sup>13</sup> Children in care or children who are provided accommodation by the Council

<sup>14</sup> DCSF

## Teenage Pregnancy

Teenage pregnancy rates have declined dramatically in Hackney since 1998 (Table 10). It is now lower than in boroughs like Lambeth, Haringey and Lewisham. While the number of pregnancies in the borough has decreased, the percentage of pregnant teenage girls having terminations has gone up by 12 percentage points to 66 per cent. There is little variation between this and the levels found in other Inner London boroughs.

**Table 10: Teenage Conceptions by Inner London borough**

Borough	Rate		% leading to abortion	
	1998	2007	1998	2007
Camden	49.3	38.3	59	65
Hackney & City of London	77.1	57.1	54	66
Hammersmith and Fulham	69.0	50.7	59	59
Haringey	62.3	70.0	46	65
Islington	58.3	50.5	63	65
Kensington and Chelsea	41.7	29.5	74	53
Lambeth	85.3	74.4	53	63
Lewisham	80.0	70.6	53	59
Newham	59.9	45	42	45
Southwark	87.2	76.2	63	66
Tower Hamlets	57.8	45.8	44	74
Wandsworth	71.1	61.3	60	58
Westminster	40.8	31.6	64	74

Source: Teenage Pregnancy Unit, DCSF

# Children and Young People

## Crime

Drug offences were the most common category of crime committed by young people in Hackney in 2008/09, accounting for 25.7 per cent of all offences. This was followed by violence against the person (19.5 per cent) and theft and handling crimes (10.2 per cent).

The ethnic profile of young people committing offences shows that the majority of offences were committed by Black British (50.7 per cent) who were overrepresented in the youth criminal justice system and White young people (31.2 per cent).

**Table 11: Number of offences committed by young people (0-17) by type (resulting in a substantive outcome), 2008/09**

Type of Crime	Number of offences	% of all offences
Drugs	332	25.7
Violence Against the Person	252	19.5
Theft and Handling	132	10.2
Robbery	106	8.2
Motoring	99	7.6
Public Order	80	6.1
Breach of Statutory Order	60	4.6
Criminal Damage	51	3.9
Other	36	2.7
Vehicle Theft	30	2.3
Sexual	27	2
Domestic Burglary	23	1.7
Fraud and Forgery	22	1.7
Breach of Bail	19	1.4
Non Domestic Burglary	8	0.6
Racially Aggravated	7	0.5
Breach of Conditional Discharge	6	0.4
Death or Injury by Dangerous Driving	1	0
<b>Total</b>	<b>1291</b>	

Source: Youth Offending Team

# Children and Young People

**Table 12: Number of offences by young people by ethnicity (resulting in a substantive outcome), 2008/09**

Ethnicity of offender	Number of offences	% of all offences
Black or Black British	655	50.7
White	404	31.2
Mixed	160	12.3
Asian or Asian British	59	4.5
Unknown	10	0.7
Chinese or Other Ethnic Group	3	0.2

Source: Hackney Youth Offending Team

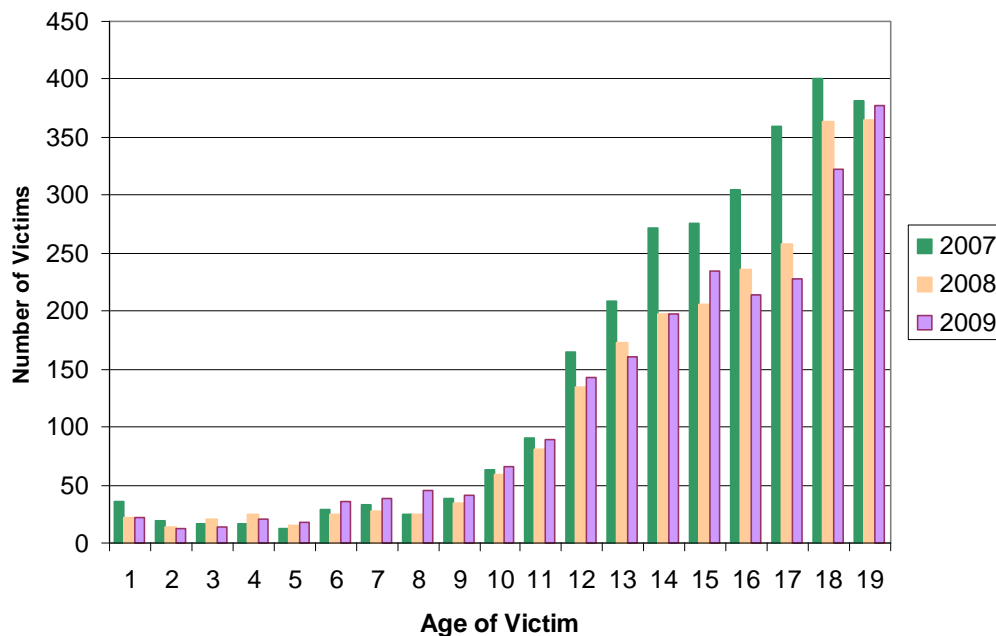
## Anti-Social Behaviour Orders

A total of 52 people in Hackney had Anti-Social Behaviour Orders in September 2009, six of whom were under 18.<sup>15</sup>

## Young Victims of Crime

The number of young victims of crime has fallen in recent years, with the most notable fall in those victims aged 12 – 18. However, the number of victims at ages 6-8 has risen slightly.

**Figure 11: Young Victims of Crime by Age**



Source: Met Police

<sup>15</sup> Anti Social Behaviour Team, Hackney Borough Police

# Children and Young People

The numbers of male and female victims are broadly equal – however, trend data shows that it is the number of male victims of crime which has made up the reduction in young victims of crime.

## Gangs

The commonly accepted definition of “gang member” across in Hackney is the definition adopted by the police: “A gang member is someone who has self-identified themselves as being a member of a gang, e.g. through verbal statements, tattoos, correspondence, graffiti etc., and this is corroborated by police, partner agencies or community intelligence.”

There are 12 recognised groups, with 2 fitting the description of criminal networks in Hackney. However, there has been an overall reduction in gang-enabled crime by 56% since April 2006<sup>16</sup>.

---

<sup>16</sup> Strategic Assessment for Community Safety, 2008/09