



# Health and Social Care

## Health and Social Care

### Introduction<sup>1</sup>

By national standards, Hackney has high levels of deprivation, which impact on the health of the population. All but one of the borough's 137 super output areas (SOAs) are in the top 40% most deprived areas in the country, and over a fifth have levels of health deprivation that rank amongst the highest 10% in England.

Since 1991 the average female life expectancy has improved dramatically and is now in line with regional and national averages. Male life expectancy has improved but only slightly faster than regional and national averages. Consequently, the gap in life expectancy for men remains.

Following multi-agency interventions, the infant mortality rate in Hackney has fallen into line with those of London and England. Illnesses including tuberculosis, infectious and parasitic diseases, conditions associated with high blood pressure and stroke cause a disproportionately high number of deaths in the Borough. Rates of HIV are higher here than regional and national averages, and Hackney has the third highest incidence of tuberculosis in London.

There is a high prevalence of mental illness in Hackney; the rate of people citing mental health conditions as the reason they are unable to work is amongst the highest in the country. Rates of hospital episodes related to schizophrenia are the highest in England.

People in Hackney are less likely to report their health as good as in London or England generally. Standards of health in the Borough are also reflected in the higher than average claim rates of incapacity benefit and disability living allowance.

Estimates suggest that the general rates of obesity are lower in Hackney than in England overall, though this can mask the higher rates amongst particular groups, for example amongst children or certain ethnic minority groups where it is significantly higher than the norm.

---

<sup>1</sup> For a fuller discussion of health and social care issues in Hackney please refer to the Health and Wellbeing Profile for Hackney and the City 2009.

# Health and Social Care

Amongst our young people, the rates of being overweight or obese are higher than the national average, with children starting primary school in Hackney almost 50% more likely to be obese than in England generally.

The rate of teenage pregnancies in Hackney has fallen at a faster rate over recent years than for most local authorities in the country, and is now close to the inner London average. The gap between the rate in Hackney and the national rate remains significant.

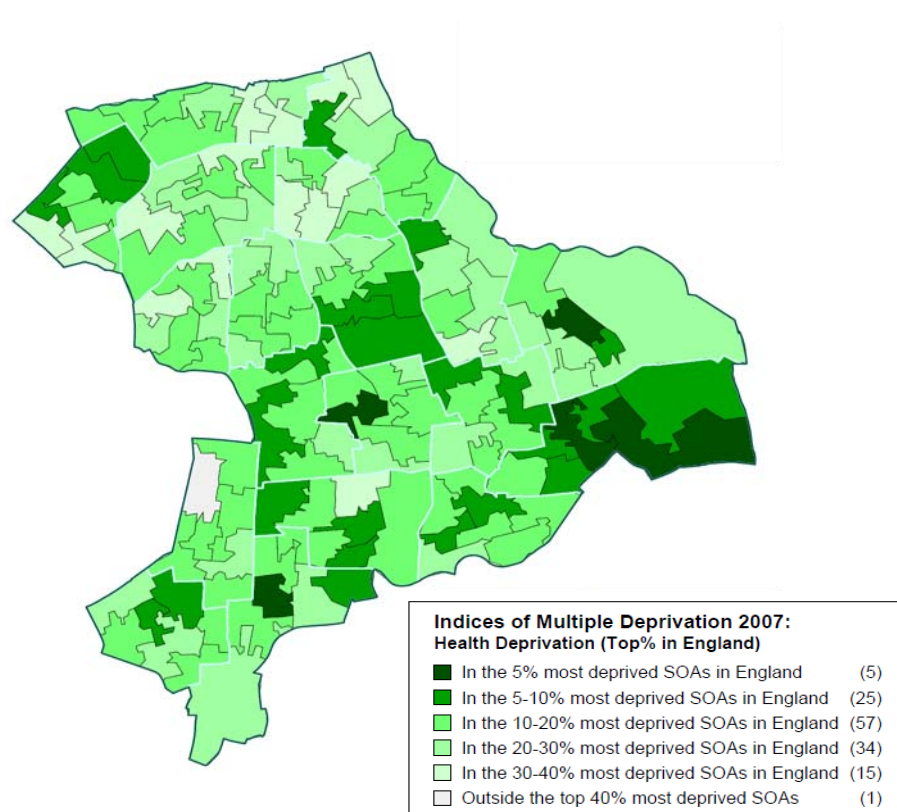
Estimated levels of binge drinking are below that of England and the proportions of people in the area who smoke are thought to be not much higher than the national rate. However, rates of death from alcohol and smoking-attributable conditions are more pronounced in Hackney. For men in Hackney, the rate of mortality attributable to alcohol is amongst the highest in the country.



## Health Deprivation Index

The Indices of Multiple Deprivation (IMD) includes an index on health deprivation and disabilities of an area according to key indicators, including life expectancy and the degree to which quality of life is impaired by poor health.

All of Hackney's wards are in the most deprived 20% of areas in England. Figure 1 shows the extent of health deprivation within Hackney, the darkest green parts show those areas with the highest levels of health deprivation.

**Figure 1: Health Services and Health Deprivation in Hackney**



 Ordnance Survey This product includes mapping data licensed from Ordnance Survey with the permission of HMSO © Crown Copyright 2008. All rights reserved. License number. 100019635. 2008.  
 Collins Bartholomew ©Bartholomew Ltd.Reproduced by permission, Harper Collins Publishers 2007

The majority of Hackney's Super Output Areas (SOAs) fall within the most deprived 20% of areas in England, and all but one are within the 40% most deprived bands.

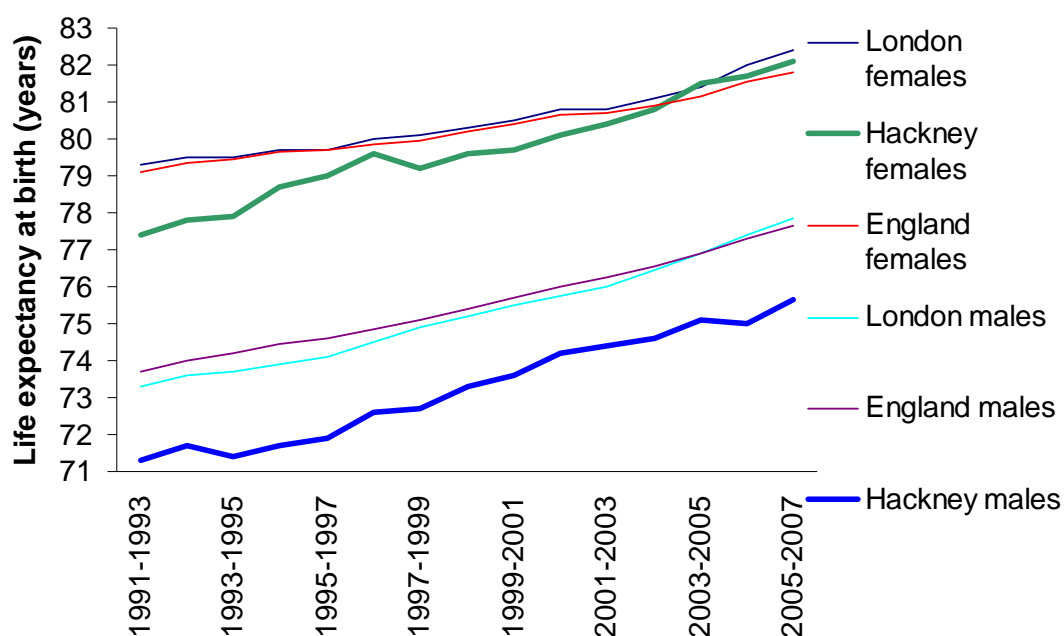
# Health and Social Care

## Life Expectancy

Life expectancy at birth is a measure of how long a new-born baby would live if current death rates remained constant. The average life expectancy for male residents in Hackney for 2005-07 was 75.7 years, 2.2 years less than the average for men in London and 2 years less than the average for men in England. The gap in life expectancy between men in Hackney and the London average is greater now than in 1991-93 when it was 2 years (Figure 2).

Female life expectancy is significantly higher than that of males. Average life expectancy for female residents in Hackney was 82.1 in 2005-07. Unlike men, women in Hackney have a similar life expectancy to women across London and England (0.3 years higher than the national average and 0.3 years lower than the regional average). Female life expectancy in Hackney has risen at a faster rate than both male life expectancy and the London and England female averages (Figure 2).

**Figure 2: Male and female life expectancy, 1991-03 to 2005-07**



Source: *Compendium of Clinical and Health Indicators*, National Centre for Health Outcomes Development

Nationally, life expectancy in Hackney ranks 192<sup>nd</sup> out of the 352 local authorities in England for women, but 340<sup>th</sup> for men. Table 1 shows the differences in life expectancy across 13 Inner London boroughs. Hackney has the 6<sup>th</sup> highest life expectancy for women, but ranks 11<sup>th</sup> out of 13 for men,

# Health and Social Care

with lower life expectancies for men than statistical neighbours Southwark and Lambeth, but higher life expectancies for women.

**Table 1: Life Expectancy Ranking of Inner London Boroughs (2005-07)**

	Life expectancy - male	Inner London rank -male	Life expectancy - female	Inner London rank - female
Camden	76.9	5	82.2	5
Hackney	75.7	11	82.1	6
Hammersmith and Fulham	78.0	3	84.0	3
Haringey	76.1	7	82.8	4
Islington	75.1	13	80.8	9
Kensington and Chelsea	83.7	1	87.8	1
Lambeth	75.8	9	80.6	11
Lewisham	76.0	8	80.8	10
Newham	75.7	10	79.8	13
Southwark	77.0	4	82.0	7
Tower Hamlets	75.3	12	80.4	12
Wandsworth	76.9	6	81.4	8
Westminster	81.5	2	84.6	2
London	77.9		82.4	
England and Wales	77.54		81.74	

*Source: Compendium of Clinical and Health Indicators, National Centre for Health Outcomes Development*

Life expectancy at 65 years is the indicator of life expectancy for those who have already reached this age. In Hackney this provides an interesting insight. For women, life expectancy at 65 is 31st best in the country, quite a contrast with life expectancy at birth where it is only average. Men see an equally dramatic improvement from one of the poorest life expectancies at birth to

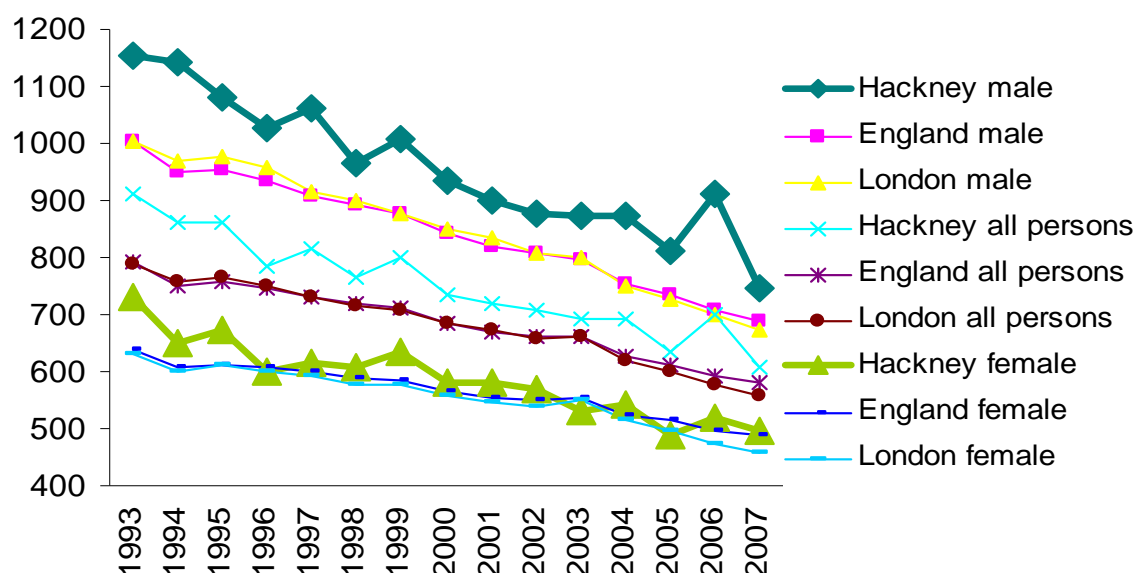
# Health and Social Care

average life expectancy at 65. The contrast between life expectancy at birth and life expectancy at 65 indicates that Hackney residents have a significantly higher than average rate of mortality amongst the under 65s.

## Mortality

Despite a slight narrowing of the gap since 1993, Hackney still had a higher age-standardised mortality rate<sup>2</sup> than London or England in 2007. The differences between Hackney in comparison with London and England are more pronounced for men than women.

**Figure 3: Mortality rates from all causes, 1993-2007**



Source: *Compendium of Clinical and Health Indicators*

Among Hackney residents, the most common causes of death are circulatory diseases, cancers and coronary heart disease, a profile broadly similar to that of the country as a whole. In 2007, 373 people died of circulatory diseases, 275 from cancers and 189 from coronary heart disease. Strokes, Pneumonia, and infectious and parasitic disease killed more than 35 people in Hackney in 2007.

<sup>2</sup> Notes: Standard mortality rates are England annual age-specific rates 2005-07. The Standardised Mortality Ratio is ratio of the age and sex standardised mortality rate in an area compared with the standard mortality rate, based on the rate for the population of England as a whole. This means the standard population used, England, will have a ratio of 100. Ratios above 100 indicate higher than expected mortality rates and ratios below 100 indicate lower than expected mortality rates.

# Health and Social Care

The Standardised Mortality Ratios in Table 2 highlight those causes of death which have above average incidence in the borough, compared to the Standardised Mortality Rate for England as a whole. Ratios above 100 indicate higher than expected mortality rates and ratios below 100 indicate lower than expected mortality rates.

Although there were only 2 deaths in the Borough resulting from tuberculosis in 2007, the rate of death from this illness is significantly higher in Hackney than England as a whole. Death rates from infectious and parasitic disease and hypertensive disease (conditions associated with high blood pressure) are also markedly higher in Hackney. Hackney men in particular suffer disproportionately higher rates of death through infectious and parasitic disease, asthma, hypertensive disease and diabetes than in England generally. Rates of death in women from infectious and parasitic disease, bronchitis and emphysema and hypertensive disease are significantly higher than in women across England.

Overall, standardised mortality rates are higher for Hackney men than the England average, but lower for women.

# Health and Social Care

**Table 2: Deaths and Standardised Mortality Ratio by cause of death, Hackney**

Cause of death	Number of deaths (age 1+), 2007			SMR (all ages), 2005-07		
	Male	Female	Persons	Male	Female	Persons
Accidental falls	2	1	3	26	49	37
Accidents	21	6	27	81	80	81
All cancers	132	143	275	104	93	99
All circulatory diseases	219	154	373	115	92	103
Asthma	3	0	3	252	77	138
Breast cancer	-	23	23	-	89	-
Bronchitis and emphysema	2	2	4	68	148	98
Causes considered amenable to health care	-	-	-	130	117	125
Cervical cancer	-	0	0	-	112	-
Chronic liver disease	10	12	22	114	128	119
Coronary heart disease	124	65	189	120	97	110
Diabetes	5	5	10	166	107	135
Epilepsy	2	2	4	33	47	38
Hypertensive disease	7	7	14	226	145	180
Infectious and parasitic disease	22	13	35	283	165	218
Land transport accidents	5	1	6	71	84	74
Leukaemia	2	7	9	89	103	95
Lung cancer	30	33	63	117	109	113
Pneumonia	28	23	51	96	85	89
Prostate cancer	13	-	13	91	-	-
Stroke	39	30	69	97	76	84
Suicide	5	3	8	75	99	80
Suicide and injury undetermined	11	7	18	109	139	116
Tuberculosis	2	0	2	-	-	379
All causes	588	508	1096	114	94	104

Source: *Compendium of Clinical and Health Indicators, NCHOD*

## General Health

One way of measuring the general health of a population is through self assessment. This gives an insight beyond clinical data to the concerns that people have about their own health. A survey conducted in the City of London and Hackney in 2006 found a lower proportion of people reporting their health as “good” than in a survey conducted nationally in the same year by a seven percentage points. In the City and Hackney the survey found a higher than average self assessment of health as “fairly good”. The survey was repeated in City and Hackney in 2009, and found an increase of people reporting their health as good (58% compared to 55% in 2006).

**Table 3 – Self assessment of health**

	<b>% whose health was good</b>	<b>% whose health was fairly good</b>	<b>% whose health was not good</b>
City and Hackney 2006	55%	32%	13%
England 2006	62%	26%	12%
City and Hackney 2009	58%	30%	11%

*Source: City and Hackney: Residents' views of health services in Hackney and the City Ipsos MORI, 2006+2009. England: General Household Survey*

Limiting long-term illness is a self-reported, generic term for a chronic condition which limits the work or activities that a person can do. The percentage of Hackney's population affected by such an illness is similar to the London and England averages. However, in Hackney there is a higher proportion of those with limiting long-term illnesses among the working age population than is the case across London and England when the comparatively young age profile of the borough is taken into account (Table 4).

**Table 4: Limiting Long Term Illness**

	<b>Number living with limiting long-term illness</b>	<b>% of resident population</b>	<b>Number of working age</b>	<b>% of working age population</b>
Hackney	36,641	18%	21,249	16%
London	1,111,284	15%	556,102	12%
England	8,809,194	18%	4,014,005	13%

*Source: Census 2001, Table KS08/ Compendium of Clinical and Health Indicators, NCHOD*

# Health and Social Care

The annual GP patient access survey, carried out amongst registered patients, gives an indication of the types of long term illnesses that people suffer from.

**Table 4.5: Long-standing conditions**

	% patients		
	Hackney %	London %	England %
No long-standing condition	61	62	58
Conditions limiting basic physical activities	19	17	19
Other long-standing condition	19	20	23
Psychological or emotional condition	6	5	4
Deafness or hearing impairment	4	6	8
Blindness or visual impairment	3	2	2
Learning difficulty	2	2	1

*Source: The Information Centre for Health and Social Care (2008), Results of GP Patient Access Survey, 2007/08 – London SHA*

## Illness and Disease

### HIV Infection

According to the Health Protection Agency the number of people diagnosed with HIV in Hackney has been steadily increasing over recent years. By 2007 the diagnosed rate amongst people aged 15-59 was almost five times that of the England average and three times that of London as a whole (Table 7) reflecting the diversity of the borough and the at risk groups that live here. The number of cases of HIV in Hackney is highest amongst gay White men and Black African women (Table 8).

**Table 7: Prevalence of diagnosed HIV infection, 2007**

	Residents accessing HIV-related care (aged 15-59)	Diagnosed prevalence per 1,000 people aged 15-59
Hackney	1,087	7.69
London	23,693	4.74
England	49,069	1.58

Source: Health Protection Agency, 2007

**Table 8: Ethnicity, sex and sexuality of Hackney residents diagnosed with HIV 2007**

	Total	Men		Women
		Who do not have sex with men	Who have sex with men	
White	513	49	425	39
Black African	401	129	11	261
Black Caribbean	65	22	15	28
Black Other	53	15	17	21
Other/Mixed	93	17	53	23
Not Known	16	Less than 10	7	Less than 5

Source: Health Protection Agency, 2007

### Tuberculosis

Incidence rates and case numbers of tuberculosis are higher in London than anywhere else in the UK, and 42% of England's cases are now diagnosed in the capital. Issues arising from poverty and deprivation including homelessness, overcrowding and poor housing conditions have been shown to adversely affect infection rates.

# Health and Social Care

Although all Inner London's boroughs have been affected by TB to some extent, Hackney had the third highest incidence rate and case numbers in 2007, when 143 cases were recorded.

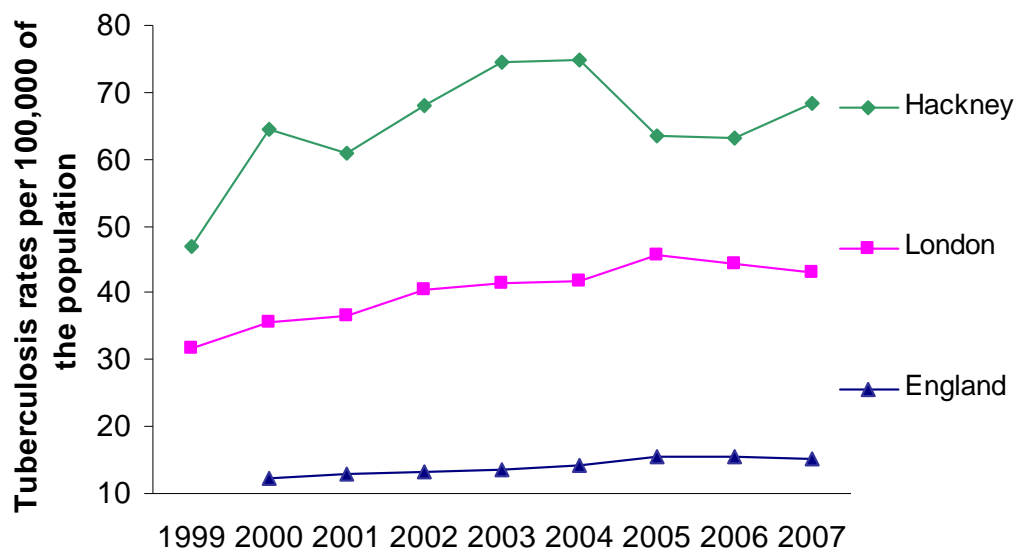
**Table 9: Tuberculosis Incidence in Inner London 2007**

	Number	Rate per 100,000	Inner London rank on rate (1 = highest)
Camden	89	38.4	10
City of London	1	12.5	14
Hackney	143	68.2	3
Hammersmith & Fulham	69	40	7
Haringey	92	40.9	6
Islington	93	49.5	4
Kensington & Chelsea	32	17.9	13
Lambeth	105	38.4	11
Lewisham	101	39.1	9
Newham	275	110.2	1
Southwark	109	39.7	8
Tower Hamlets	154	71.5	2
Wandsworth	116	41.2	5
Westminster, City of	86	36.7	12
London Totals	3265	43.2	
England	7742	15.2	

*Source: Health Protection Agency, 2007*

The rise in tuberculosis incidence rates since 1999, which has been disproportionate in Hackney compared to national and London rates, is highlighted in Figure 4.

**Figure 4: Tuberculosis rates per 100,000 of the population**



Source: Health Protection Agency, 2007

## Sickle cell and thalassaemia

Sickle cell disease and thalassaemia are blood haemoglobin disorders which are common in regions of Africa, India, Mediterranean, Middle East and the Far East. They are very serious conditions and children living with them have complex daily needs.

NHS City and Hackney keeps a register of all children living with sickle cell disease or thalassaemia. Sickle cell prevalence in City and Hackney is 3.5 per 1000 population aged up to 19 years. Figure 10 shows that prevalence is highest in children of Black African origin at 15 per 1000 and children of Black Caribbean origin at 7 per 1000; it is also slightly higher among girls.

**Table 10: Prevalence of sickle cell disease per 1000 population aged 0 to 19 years old.**

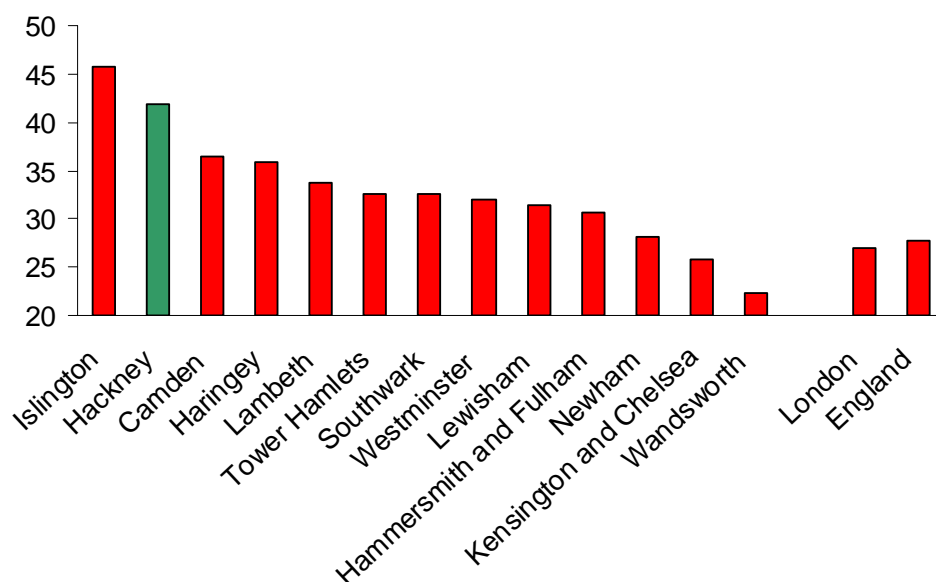
	Prevalence per 1000 males	Prevalence per 1000 females
White	0.0	0.0
Black Caribbean	5.9	8.5
Black African	14.4	15.3
Black Other	0.0	0.6
Asian	0.0	0.0
Chinese	0.0	0.0
Other	5.8	5.0
All Ethnicities	3.3	3.7

Source: NHS City and Hackney Sickle cell register 2008-09

## Mental Health

Poor mental health can have damaging consequences affecting quality of life and both physical health and mortality rates.<sup>3</sup> There is a relatively strong prevalence of mental health problems in Hackney. In 2007, the rate of working age people claiming incapacity benefit due to mental illness was the second highest in inner London, and the 30<sup>th</sup> highest amongst 351 local authorities nationally.

**Figure 5: Working age people in receipt of incapacity benefit or severe disablement allowance for mental health conditions, rate per 1000**



Source: Association of Public Health Observatories, 2007

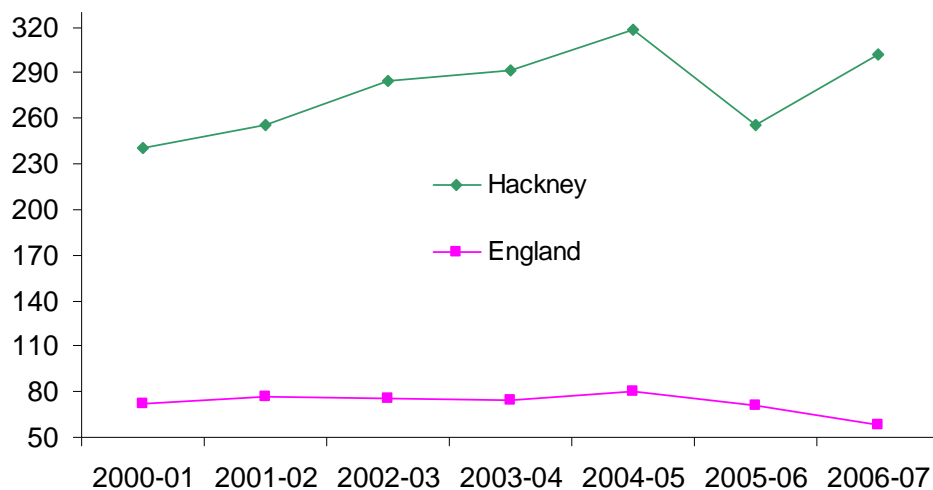
Hackney reported the second highest rates of hospital episodes relating to schizophrenia in England in 2006-07 after Waltham Forest. Over 580 hospital episodes related to schizophrenia, equating to a rate of 350 episodes per 100,000 resident population aged 15-74. This compares to a national rate of 66. Hackney saw a rise in hospital episode rates between 2001-2006 while across England as a whole there was a fall<sup>4</sup>.

<sup>3</sup> Focus on Social Inequalities, ONS ( 2004)

<sup>4</sup> London Health Observatory

# Health and Social Care

**Figure 6: Hospital episodes for schizophrenia, directly age standardised rate per 100,000 population, 15-74 years,**



Source: London Health Observatory

Haringey and other east London boroughs have high rates, however Hackney's rate is significantly above its comparators.

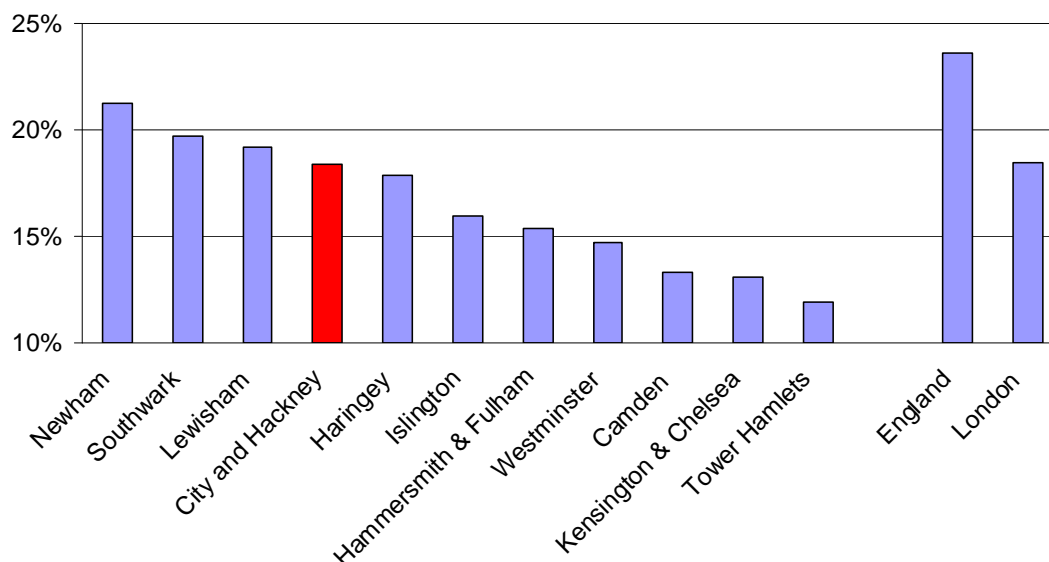
## Lifestyle and Social Care

### Obesity

Being overweight or obese can aggravate risk factors, such as high blood pressure, that are associated with strokes and coronary heart disease - two major causes of mortality within the borough. The rate of obesity amongst adults in City and Hackney was estimated to stand at 18% in 2003-05, in line with the average for London and below that of England.

# Health and Social Care

**Figure 7: Estimated obesity prevalence amongst adults, by PCT.**



Source: Health Surveys for England 2003 to 2005

Data available for previous years however showed a gender-divide in the story for North East London, with rates of obesity and being overweight in men lower than the national rate, but with rates amongst women exceeding the national rate. Table 11 looks at estimated 2004 obesity rates in London by ethnicity within gender. It shows, on a London level, obesity amongst women in a number of black and ethnic minority groups (particularly Black Caribbean, Black African and Pakistani) to be considerably more common than for the female population generally. The higher prevalence of obesity amongst women in these groups is likely to have a disproportionate effect on obesity levels for women in the Borough.

**Table 11: Estimated obesity prevalence amongst adults in London, by BME group within gender.**

	Black Caribbean	Black African	Indian	Pakistani	Bangladeshi	Chinese	Irish	All
Men - London	22%	14%	8%	13%	5%	8%	22%	<b>18%</b>
Women - London	28%	41%	18%	28%	18%	5%	23%	<b>19%</b>
All - London	26%	30%	13%	19%	11%	6%	23%	<b>19%</b>

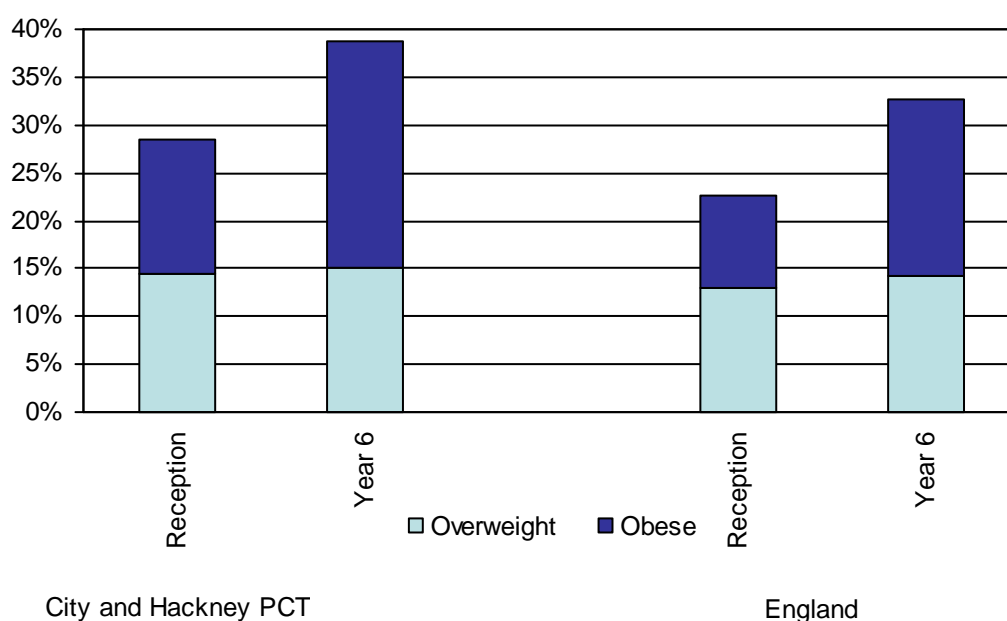
Source: Health Survey for England 2004

# Health and Social Care

In overall terms, Hackney adults appear to fare well in terms of obesity rates compared to the national picture. However, weight problems amongst children in the borough are more common compared to the national average, with potential implications for future overweight and obesity levels amongst adults. Overweight or obese children can develop health problems more usually seen in adulthood such as coronary artery diseases, high blood pressure and type 2 diabetes.

Overweight children are also twice as likely to be obese upon reaching adulthood than children not overweight, bringing increased risk of the health problems mentioned earlier. Figure 8 looks at the proportion of children in Reception school year (aged 4-5 years) and Year 6 (aged 10-11 years) who are recorded as being overweight or obese. The chart shows that at starting and leaving primary school, overweight levels are higher amongst City and Hackney children than the rate for England. The differentials in terms of obesity are more pronounced. On starting school, 14% of children in Hackney are obese compared with 9.6% of children nationally. Both in City and Hackney and England, there is an acceleration in rates of obesity as children move through primary school. However, the increase moves at a slower rate in City and Hackney than nationally, meaning the differences are less marked at the end of primary school than they are at the start.

**Figure 8: Proportion of children overweight or obese, by school stage**



Source: National Child Measurement Programme 2007/08

# Health and Social Care

## Smoking

Lifestyle factors impacting on health include levels of smoking and heavy alcohol consumption. The 2006 Health Survey for England indicates a much higher overall smoking prevalence in Hackney and the City at 32% (national average is 25%). A higher proportion of men (39%) smoke than women (26%). Smokers in Hackney are mostly young (under 35yrs) or old (over 55yrs) rather than middle aged, and smoking prevalence shows a clear association with socio-economic class.<sup>5</sup> The rates of death that are attributable to smoking are higher in Hackney than in England generally.

**Table 12 – Smoking prevalence and deaths from smoking, by London Borough/Primary Care Trust**

	<b>Rates of death attributable to smoking per 100,000 population for those aged 35+ 2004-06, by Borough</b>	<b>Estimated percentage of smoking rate amongst adults (PCTs) 2003-05</b>
Camden	249	24%
Hackney/City and Hackney	<b>265</b>	<b>25%</b>
Hammersmith & Fulham	228	24%
Haringey	223	25%
Islington	300	28%
Kensington & Chelsea	152	19%
Lambeth	274	28%
Lewisham	284	27%
Newham	303	25%
Southwark	274	28%
Tower Hamlets	337	26%
Wandsworth	249	24%
Westminster	184	23%
England	225	24%

*Source: Rates of smoking deaths: London Health Observatory  
Rates of smoking: Health Survey for England 2003-05*

<sup>5</sup> Health and Wellbeing Profile for Hackney and the City 2009, p 73.

## Alcohol

Modelled estimates suggest the proportion of adults binge drinking and engaging in hazardous drinking in Hackney is below the level for England,. However, other indicators are not as positive; the share of hospital admissions in Hackney that are attributable to alcohol are amongst the highest in the country and rates of mortality attributable to alcohol are higher for Hackney men and women than the London average. For men, they are again amongst the highest in the country. High levels of drinking associated mortality has a socio-economic link.

**Table 13 – Deaths and hospital admissions attributable to alcohol**

	Hackney		London average		England average	
	Men	Women	Men	Women	Men	Women
Deaths from alcohol-attributable conditions - standardised rate per 100,000 (2006)	60.3	17.4	41.2	14.1	39.8	16.2
Persons admitted to hospital due to alcohol-attributable conditions - standardised rate per 100,000 population (2006/07)	1591.2	825.4	1212.4	612.0	1171.4	657.5

*Source: Northwest Public Health Observatory*

## Disability

The numbers and rates of Disability Living Allowance (DLA) claims in an area give an indication of the extent of personal care and/or mobility needs. The percentage of Hackney's population claiming DLA in February 2009 exceeded both the London and England averages.

# Health and Social Care

**Table 14: Population claiming DLA**

	<b>England</b>	<b>London</b>	<b>Hackney</b>
Total receiving DLA, February 2009	2,492,040	304,580	10,780
Mid year population estimate 2008	51,446,200	7,619,800	212,200
% of Population claiming DLA	4.8%	4.0%	5.0%

*Calculated from DWP DLA figures and Mid-year population estimates*

*Source: ONS*

The proportion of DLA beneficiaries under the age of 16 in Hackney is slightly higher than the national average but below that for London (Table 15). DLA claimants in Hackney are more concentrated amongst the age group of 16-64 than in London and Great Britain, meaning that in addition to having a higher claim rate overall, Hackney is also disproportionately affected in the share of its people of working age unable to work due to disability.

**Table 15: Age distribution of DLA cases in payment, February 2009.**

<b>Age</b>	<b>0-4</b>	<b>5-10</b>	<b>11-15</b>	<b>Total 0-15</b>	<b>16-64</b>	<b>65+</b>
London	2%	5%	5%	12%	68%	20%
Hackney	2%	5%	4%	11%	70%	19%
Great Britain	1%	4%	5%	10%	64%	26%

*Source: DWP*

Table 16 looks at the proportion of people of working age claiming various benefits in February 2009. It shows that almost 4,800 more people in Hackney claimed incapacity benefits (and were therefore unavailable for work due to illness or disability) than the numbers claiming job seekers allowance (whose health rendered them available for work). The differentials in incapacity benefit claim rates in Hackney compared to London is larger than it is for claim rates of job seekers allowance.

# Health and Social Care

**Table 16: Benefit claim rates amongst the working age population, February 2009**

	Hackney (numbers)	Hackney (%)	London (%)	Great Britain (%)
Total claimants	31,770	22.4	15.1	15.7
Job seekers	8,150	5.7	3.8	3.9
Incapacity benefits	12,920	9.1	6.0	7.0
Lone parents	6570	4.6	2.9	2.0
Carers	1,400	1.0	0.8	1.1
Others on income related benefits	1,520	1.1	0.6	0.5
Disabled	1,040	0.7	0.7	1.0
Bereaved	160	0.1	0.2	0.2
Key out-of-work benefits†	29,170	20.5	13.3	13.4

†job seekers, incapacity benefits, lone parents and others on income related benefits

Source: DWP/Nomis

The rate of households receiving home help and care in Hackney is lower than the England average and below the rate of its neighbouring London boroughs. Households receiving care in Hackney have a generally higher dependence in terms of the numbers of contact hours received than our neighbours or the England average.

**Table 17: Rates and percentage of households receiving home care per week by all sectors<sup>6</sup>**

	Households receiving home help and home care per 10,000 households	2 hours or less	more than 2 hours, up to and including 5 hours	more than 5 hours, up to and including 10 hours	more than 10 hours, no overnight	more than 10 hours, including overnight
Hackney	140	9	19	24	46	3
Tower Hamlets	225	12	18	25	45	1
Newham	170	15	20	27	38	0
Islington	180	25	16	21	34	4
England	160	18	25	26	27	5

Source: Community Care Statistics 2008: Home care services for adults, Department of Health

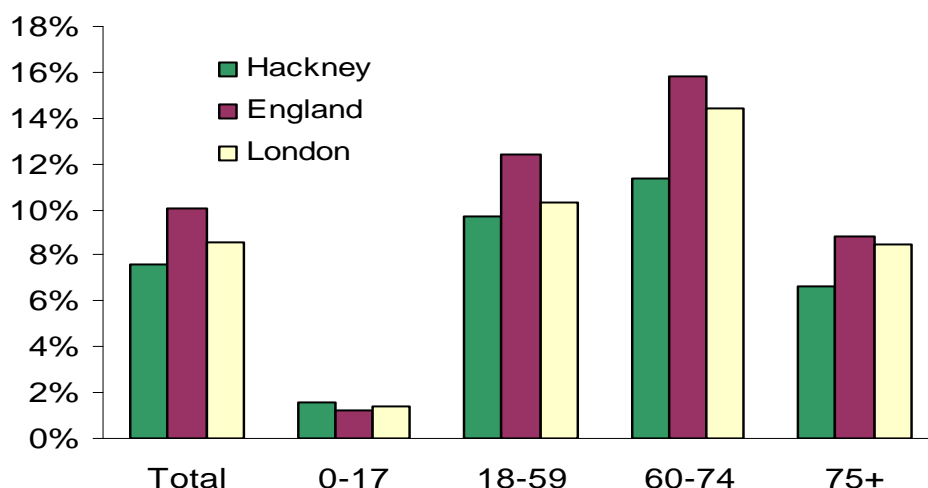
<sup>6</sup> Local authority and Independent sectors

## Carers

Carers are people who give help and support to a friend or family member who, due to illness, disability or frailty is unable to manage living in their own home without assistance. Carers are unpaid. It was estimated that in 2007 there were around 18,000 people providing care in Hackney. It was also estimated at this time that 800 of the carers in Hackney were aged under 18. Performing a caring role can have implications for someone's life; young carers can suffer a loss of education and life chances, carers of working age can see their employment opportunities limited and older carers are particularly vulnerable to the impact on health and well being that caring for someone else can have. There was a considerable gender divide, with more women than men delivering unpaid care across age ranges.

In 2001 the Census found that compared with the local and regional averages, people in Hackney were less likely to provide unpaid care. However the rate of young people providing care in Hackney was slightly higher than that of London and England.

**Figure 9: Proportion of people providing unpaid care, by age**



Source: Census 2001

## Infant Mortality

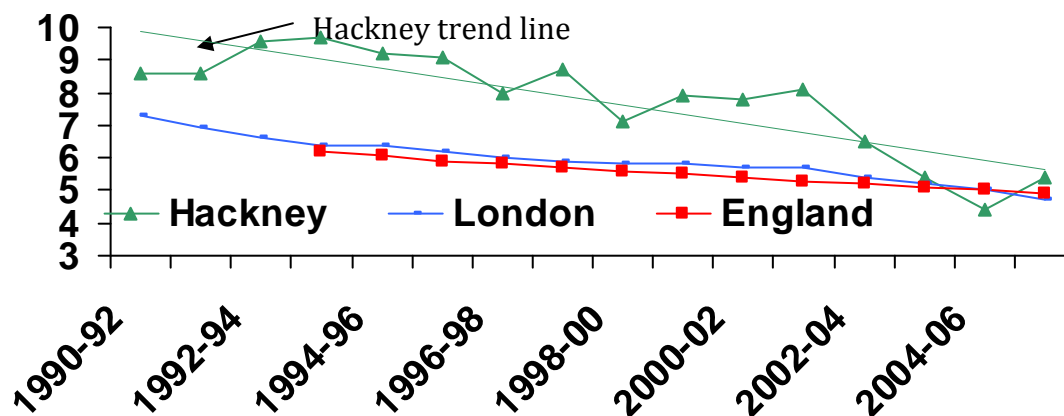
The infant mortality rate is the number of deaths of children under one year old per 1,000 live births. Infant mortality is also used as an indicator of the general health of a population.

# Health and Social Care

Hackney's infant mortality rate fell from 8.6 in 1990-92 to 5.4 in 2005-07. The downward trend has fallen at a faster rate than in London and England as a whole and the work undertaken by agencies in Hackney to achieve this was recognised by the Audit Commission awarding the borough a green flag in the 2009 Comprehensive Area Assessment. The result has been a convergence with the national average.

# Health and Social Care

**Figure 10: Infant Mortality 1990-2007**



Source: City and Hackney PCT

**Table 18: Infant Mortality by Inner London borough 2005-07**

	Number of deaths under 1 year	Rate per 1000 live births
City of London	1	5.3
Camden	36	4
Hackney	24	5.4
Hammersmith & Fulham	29	3.6
Haringey	75	6
Islington	43	5.2
Kensington & Chelsea	19	2.8
Lambeth	82	5.7
Lewisham	62	4.6
Newham	101	6
Southwark	92	6.4
Tower Hamlets	55	4.5
Wandsworth	61	4.2
Westminster, City of	38	4.4
Inner London	766	5
Outer London	985	4.7
London	1751	4.8
England and Wales	9855	4.9

Source: Compendium of Clinical and Health Indicators, National Centre for Health Outcomes Development

# Health and Social Care

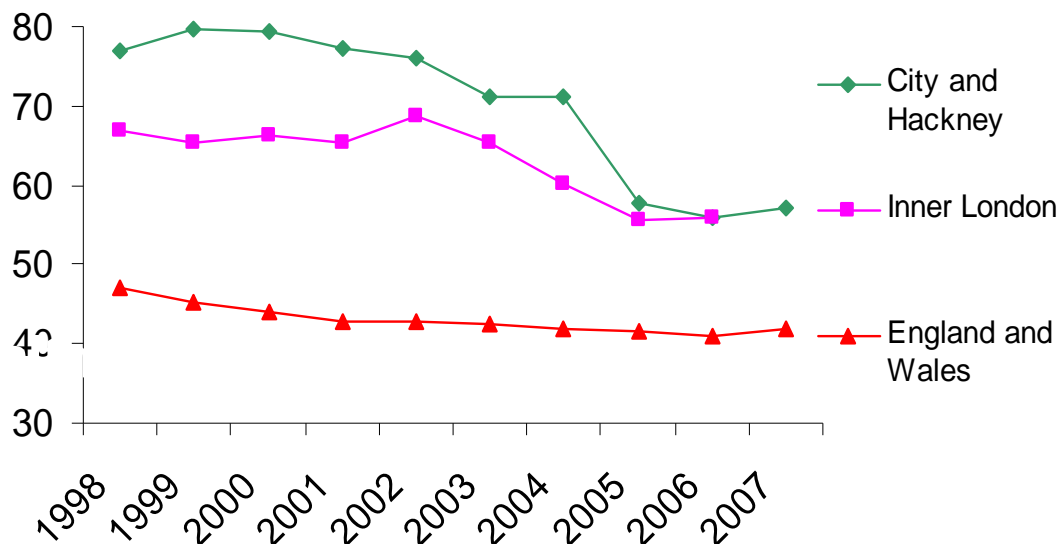
## Teenage pregnancy

Research has shown that teenage pregnancy can bring relatively poor health and social outcomes for both mother and child. Children born to teenage mothers have 60% higher rates of infant mortality and are at increased risk of low birth weight, bringing implications for long term health. Teenage parents are more likely to suffer from post-natal depression and periods of poor mental health for significant periods after giving birth, and both mother and child are put at increased risk of living in poverty and the subsequent poor health associated with this.

Figure 11 shows the decline of teenage pregnancies in recent years in the Borough, with a drop of 26 percentage points between 1998 and 2007. By 2006, Hackney had fallen largely into line with the average for inner London.

However, as with 9 of the other 12 inner London Boroughs, rates are still higher than the national average.

**Figure 11 – Rates of pregnancy per 1000 female population aged 15-17**



Source: Office for National Statistics and Teenage Pregnancy Unit