



Hackney's Population

Hackney's Population

Hackney's Population¹

Since the completion of the previous Borough profile in 2006, there have been a number of changes to the available population statistics. This includes revisions of mid-year population estimates by the Office of National Statistics. This updated profile uses these revised estimates and the 2008 round Greater London Authority projections.

Population

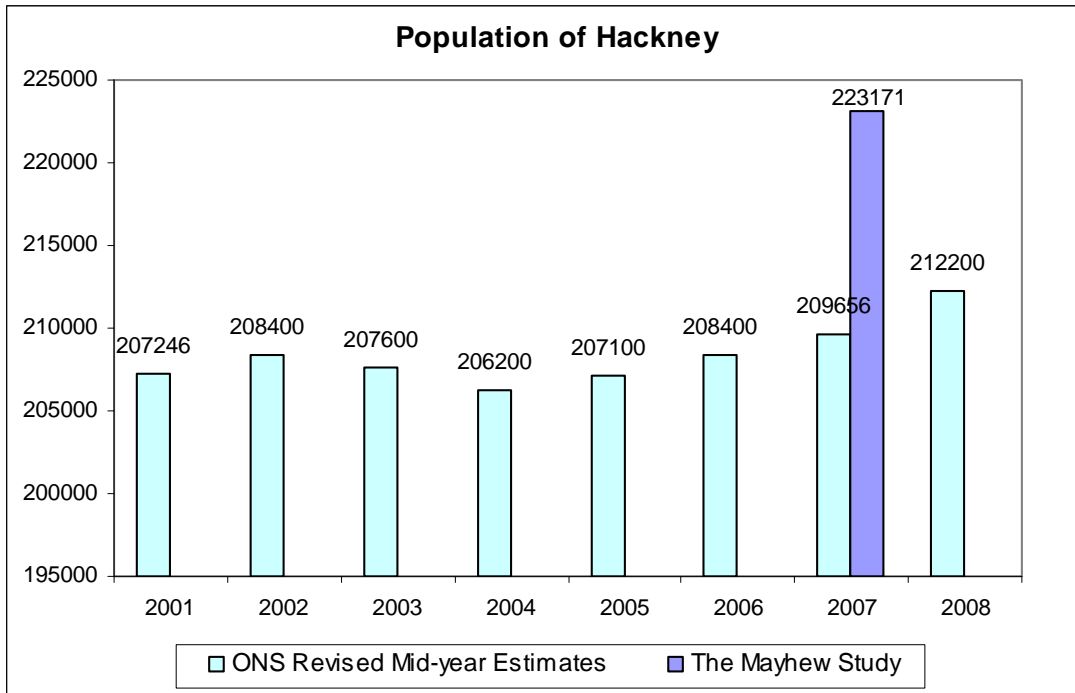
The latest ONS 2009 Mid-year estimates Hackney's population to be around 216,000. Hackney still remains as one of the smaller boroughs in London in terms of population size, ranking 24th out of 33 in the 2008 Mid Year Estimates.

The Mayhew Associates Ltd population Study

In light of the uncertainties associated with the official estimates, London Borough of Hackney commissioned a population study by Mayhew Associated Ltd. The study used a combination of local administrative sources and estimated the population to be around 223,171 as at end of June 2007, some 6.4% (13,515) more than the ONS estimate at that time. The administrative datasets used in the study included; the GP register and the register of birth and deaths from the PCT, Pupil Level Annual School Census (PLASC) from the Learning Trust, Council Tax database, Housing Tenure information, Local Land and Property Gazetteer (LLPG) and the Electoral Roll.

Hackney's Population

Figure 1 – Population in Hackney



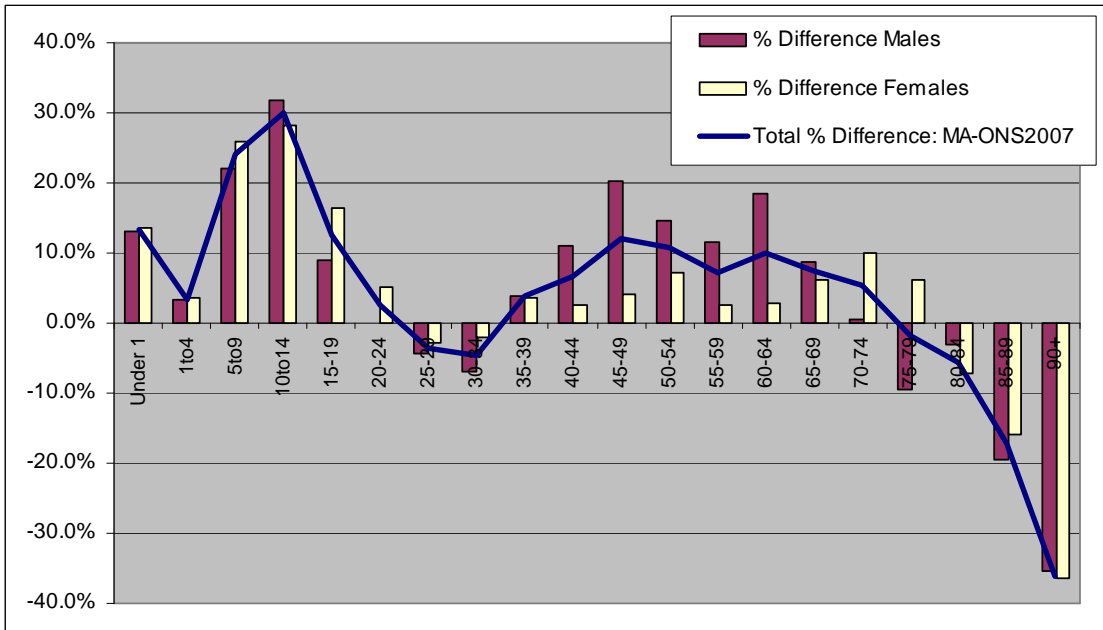
Source: ONS 2008 Mid-year estimates, population estimate from the Mayhew Study

Population estimates compared: ONS vs the Mayhew Study

Although the overall estimate by the Mayhew Study was 13,500 higher than the ONS estimate in 2007, the comparisons by age group and gender showed that not all groups were captured equally. This was particularly apparent within the 25-29, 30-34 and the over 75 age groups. An example of this was apparent in the 75-79 age group where more females (6%) were found but the number of males (-9.5%) were undercounted compared to the official counts.

Hackney's Population

Figure 2 – Comparison of population estimates from the ONS and Mayhew Study



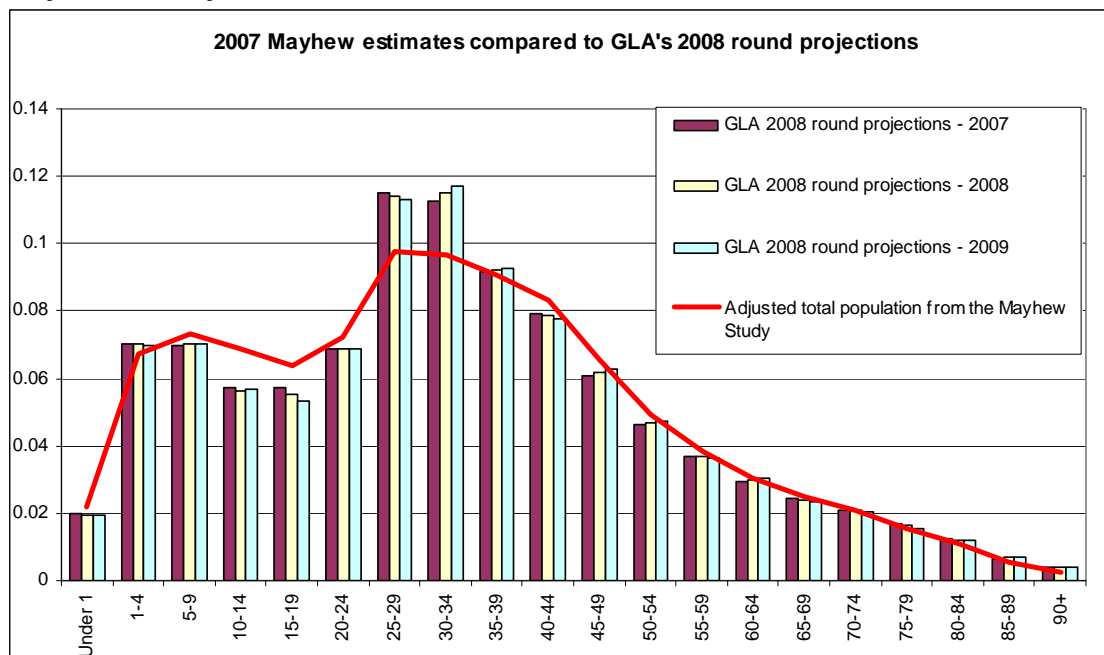
Source: ONS 2008 Mid-Year Estimates, Figures from Mayhew Study

Population figures compared: 2008 round GLA projections and estimates from the Mayhew Study

Comparisons of the figures from the Mayhew Study and the latest GLA projections also highlighted an undercount in the 25-34 age group. The figures for the over 75s however, were similar from both sources.

Hackney's Population

Figure 3 – Comparison of GLA 2008 population projections and estimates from the Mayhew Study



Source:

Population figures from the Mayhew Study, GLA 2008 round projections (Low)

More investigation therefore, is required to establish the reasons behind these differences by age and gender, in order to rule out possibilities of over/under counting because of the definitional differences between the official and local administrative sources.

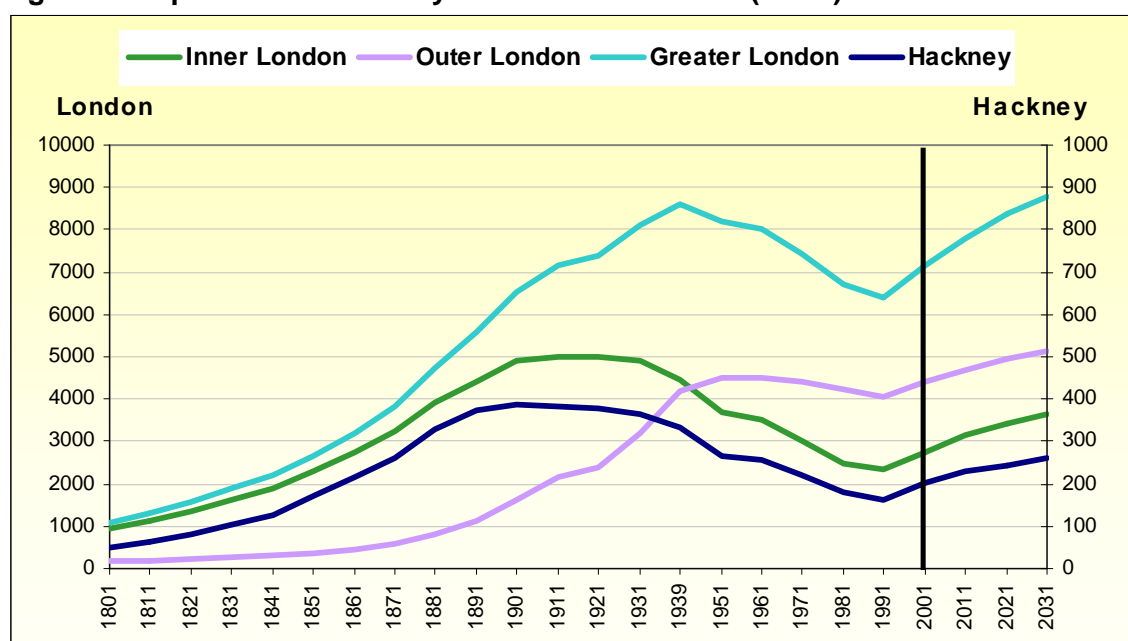
ONS identified 10,400 short-term migrants between 2006 and 2007, comprising 8,620 non-workers (the majority of which are suspected to be visitors rather than migrants) and 1780 workers. It may be that some of the difference of 13,500 was due to the short-term worker migrants, as it would have been difficult to capture the non-worker migrants through formal registers. These were distributed to local authority areas, using a regression model based on several sources namely; patient registers, Inter Departmental Business Register (for the number of businesses in Hotels and Catering industrial sector), ONS mid-year estimates by ethnic group and the ONS Area Classifications. The assumptions used were that areas with high numbers of existing migrant population and businesses in the tourist industries were more likely to attract short-term holidaymakers.

Population growth in Hackney's started as late as the 18th century (Figure 1.4). Before this period, Hackney was still mostly pastures and farmland. The borough was gradually populated with the advent of railways (Bishopsgate station was opened in 1840) and as industries moved into the borough. The main industries that helped boost the population increase included the water powered mills around Leabridge, the paint manufacturing (Lewis Berger) factory in Homerton (1780), Xylonite plastic manufacturing in Hackney wick

Hackney's Population

and the furniture trade in Shoreditch. The population of the borough reached its highest peak around 1901, just after the introduction of the 1899 local government act, when the three parishes of Stoke Newington, Shoreditch and Hackney were formed.

Figure 4: Population in Hackney & London 1801-2031 ('000s)



Source: Years to 1971: GLC Research Memorandum 413; 1981: 1981 Census Small Area Statistics Table 1; 1991: 1991 Census Small Area Statistics Table 1; 2001 onwards: GLA 2008 round Population Projections (PLP Low)

After 1901 Hackney's population decreased significantly and the previous pattern diverged from that of both outer and greater London. Following the 1930's slum clearances and the relocation of the industrial worker to outer boroughs, together with the relocation of most industries out of the borough, the population declined rapidly and reached its lowest around 1991. This de-urbanisation was around 40 years before the decline in population in Outer and Greater London. The three parishes previously formed in 1899, were combined following the re-organisation of local government act in 1965. After this time a second cycle of urbanisation took place. This growth is expected to continue over the coming decades with the GLA (Greater London Authority) predicting that Hackney's population will reach 262,553 by 2031 .

Hackney's Population

Population Growth

Overall there was a 6.2% increase in the population of the capital between 2001-2008, the majority of which were in Westminster (30.2%), Camden (19%) and Southwark (13.6%). In the years between 2001 and 2008, Hackney's population has increased by 4.6%. This increase has been the result of reduced net internal outflow and high birth rates (Section 1.3). This was one of the smallest increases among inner London boroughs for this period, less than half the growth (11.9%) in the previous decade (1991 to 2001).

Table 1: Population change in Inner London Boroughs 1981-2001 and 2001-2008

Borough	1981	2001	2008	% Change 1981-2001	% Change 1991 - 2001	% Change 2001-2008
City of London	4,701	7,181	7,942	52.8%	73.4%	10.6%
Tower Hamlets	139,996	196,119	220,509	40.1%	21.8%	12.4%
Kensington and Chelsea	125,892	158,921	180,317	26.2%	14.8%	13.5%
Camden	161,098	198,019	235,680	22.9%	16.2%	19.0%
Southwark	209,735	244,861	278,047	16.7%	12.0%	13.6%
Newham	209,128	243,905	249,503	16.6%	15.0%	2.3%
Hammersmith & Fulham	144,616	165,256	172,243	14.3%	11.3%	4.2%
Hackney	179,529	202,822	212,214	13.0%	11.9%	4.6%
Islington	157,522	175,792	190,882	11.6%	6.7%	8.6%
Westminster	163,892	181,281	236,031	10.6%	3.7%	30.2%
Lambeth	244,143	266,161	274,514	9.0%	8.7%	3.1%
Lewisham	230,488	248,923	261,552	8.0%	7.8%	5.1%
Haringey	202,650	216,511	226,246	6.8%	7.1%	4.5%
Wandsworth	252,240	260,382	283,951	3.2%	3.2%	9.1%
Inner London	2,425,630	2,766,134	3,029,631	14.0%	10.4%	9.5%
London	6,608,598	7,172,075	7,619,809	8.5%	7.4%	6.2%

Source: 1981 Census Small Area Statistics Table 1, Census 2001 Standard Table T001, ONS 2008 Mid-year Estimates

The 2008 GLA projections (Table 1) show that while Hackney's population growth (10.36%) between 2001 and 2011 has been higher than both Inner (9.31%) and Greater London (6.28%), this growth is projected to slow down in the years up to 2031, when the total population in Hackney is projected to rise to 262,553.

Hackney's Population

Table 2: Population Growth 1981 – 2031

Year	Hackney	Percentage Increase		
	Population (Increase)	Hackney	Inner London	Greater London
1981	179,529			
1991	181,248 (1,719)	0.96%	-6.20%	-4.76%
2001	207,246 (25,998)	14.34%	22.03%	14.53%
2011	228,721 (21,475)	10.36%	9.31%	6.28%
2021	244,376 (15,656)	6.84%	9.28%	7.38%
2031	262,553 (18,176)	7.44%	7.00%	4.96%

Source: 1981 Census Small Area Statistics Table 1, 1991 Census Small Area Statistics Table 1, GLA 2008 round projections (Low)

Hackney's Population

Natural Change

Natural change, the difference between births and deaths, was the main contributor to population growth between 2001 and 2008. This accounted for an extra 21,900 people which together with a net outward migration of 17,000 people resulted in the total population increase of 5000 in the same period (Table 3).

Table 3: Components of population change in Hackney 2001-2008

	Thousands							
	2001-2002	2002-2003	2003-2004	2004-2005	2005-2006	2006-2007	2007-2008	2001-2008
Population at beginning of Year	207200	208400	207600	206200	207100	208400	209700	
Natural change	2900	2900	3000	3200	3200	3400	3300	21900
Net migration (Internal and International)	-1700	-3800	-4400	-2200	-2000	-2100	-800	-17000
Total population change	1200	-800	-1400	1000	1200	1300	2600	5100
Population at end of Year	208400	207600	206200	207100	208400	209700	212200	

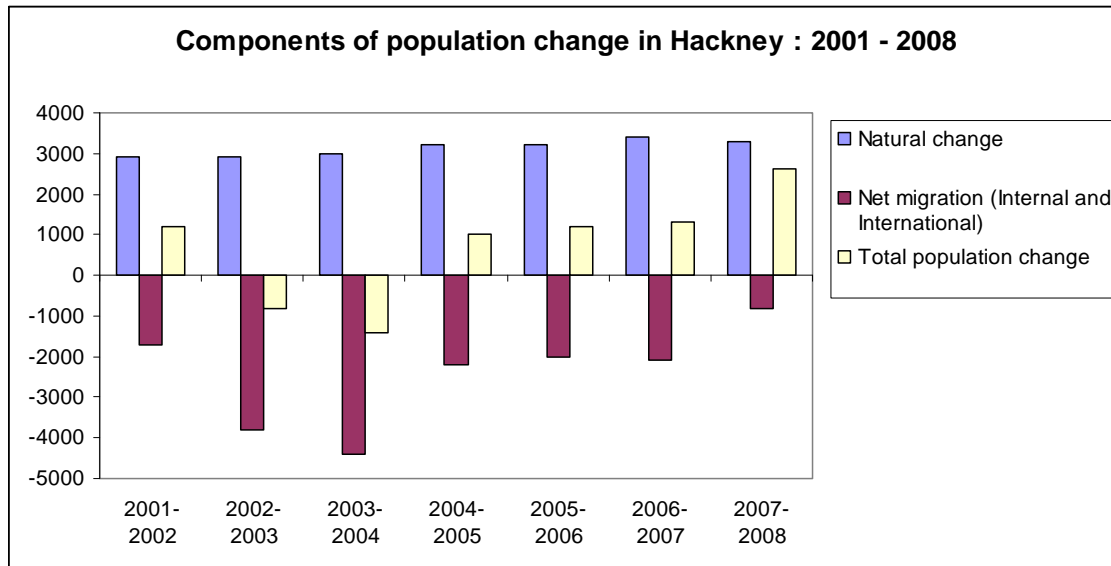
Source: ONS Mid-Year Estimates- Components of Change analysis (2001- 2008)

* Small differences in totals are due to rounding

The increasing population since 2001 in Hackney has been the result of an increase in the number of births and a decrease in net outward migration (Table 4). The increasing number of births has continued until 2008, when there were 4,400 live births and 1,100 deaths and a net migration loss of 800 people (Table 5).

Hackney's Population

Figure 5: Components of Population Change in Hackney



Source: ONS Mid-Year Estimates- Components of Change analysis (2001- 2008)

Table 4: Natural change: 2001-2008

	2001-2002	2002-2003	2003-2004	2004-2005	2005-2006	2006-2007	2007-2008	2001-2008
Live births	4100	4200	4300	4400	4500	4500	4400	30400
Deaths	1200	1300	1300	1200	1200	1200	1100	8500
Natural change	2900	2900	3000	3200	3200	3400	3300	21900

Source: Office of National Statistics (ONS)

Table 5: Live Births

Live Births	2001	2002	2003	2004	2005	2006	2007	2008	Change 2001-2006	Change 2001-2008
Hackney	4095	4084	4261	4366	4439	4613	4,500	4,485	12.6%	9.8%
Inner London	45089	45734	47848	48599	49548	51385	52,198	52,744	14.0%	15.3%
London	104162	105,603	110,437	113,679	116,019	120883	125,505	127,651	16.1%	20.9%
England	563744	565,709	589,851	589,851	613,028	635,679	655,357	672,807	12.8%	18.9%

Source: Office of National Statistics (ONS)

Until 2006, the rise in the number of live births in Hackney (12.6%) was consistent, but since 2006 there has been a divergence, with London (20.9%), inner London (15.3%) and

Hackney's Population

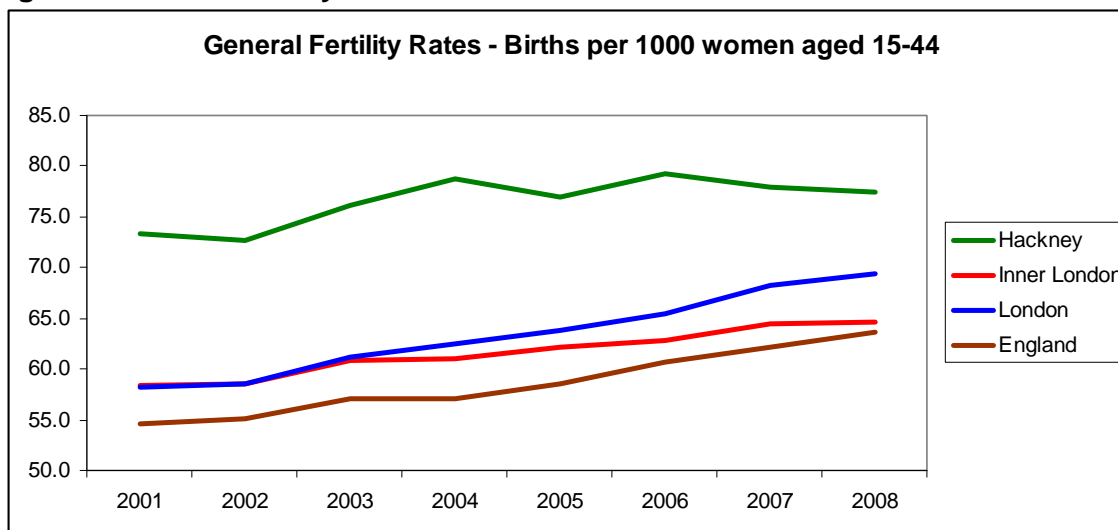
England (18.9%) births increasing at a faster rate compared to Hackney (9.8%). Consequently, the general fertility rates (the number of births per 1000 women aged 15-44) in Hackney (Table 6) also rose faster (6.0) than inner London (4.4) until 2006, but dropped after that, resulting in an increase of only 4.2 compared to the higher rates in London (11.2) as a whole.

Table 6: General Fertility Rates

General Fertility Rates	2001	2002	2003	2004	2005	2006	2007	2008	Change 2001-2006	Change 2001-2008
Hackney	73.3	72.6	76.2	78.8	77.0	79.3	77.9	77.5	6.0	4.2
Inner London	58.4	58.5	60.9	61.0	62.2	62.8	64.4	64.7	4.4	6.3
London	58.2	58.5	61.1	62.5	63.8	65.4	68.3	69.4	7.2	11.2
England	54.6	55.1	57.0	57.0	58.6	60.6	62.1	63.6	6.0	9.0

Source: Office of National Statistics (ONS)

Figure 6 General Fertility Rates : 2001 - 2008



Source: Office of National Statistics (ONS)

The number of registered deaths have only slightly decreased (-4.4%) between 2001 and 2006, compared to inner London (-15.6%) and London (-12.6%) in the same period (Table 7).

Hackney's Population

Table 7: Mortality Rates¹

Registered Deaths	2001	2006	Change 2001-2006
Hackney (Actual)	1306	1248	-4.4%
Inner London	20064	16931	-15.6%
London	58583	51203	-12.6%
England	497878	470326	-5.5%

Source: Office of National Statistics (ONS)

¹ DMAG Update 12-2007: ONS Deaths and Natural Change 2006

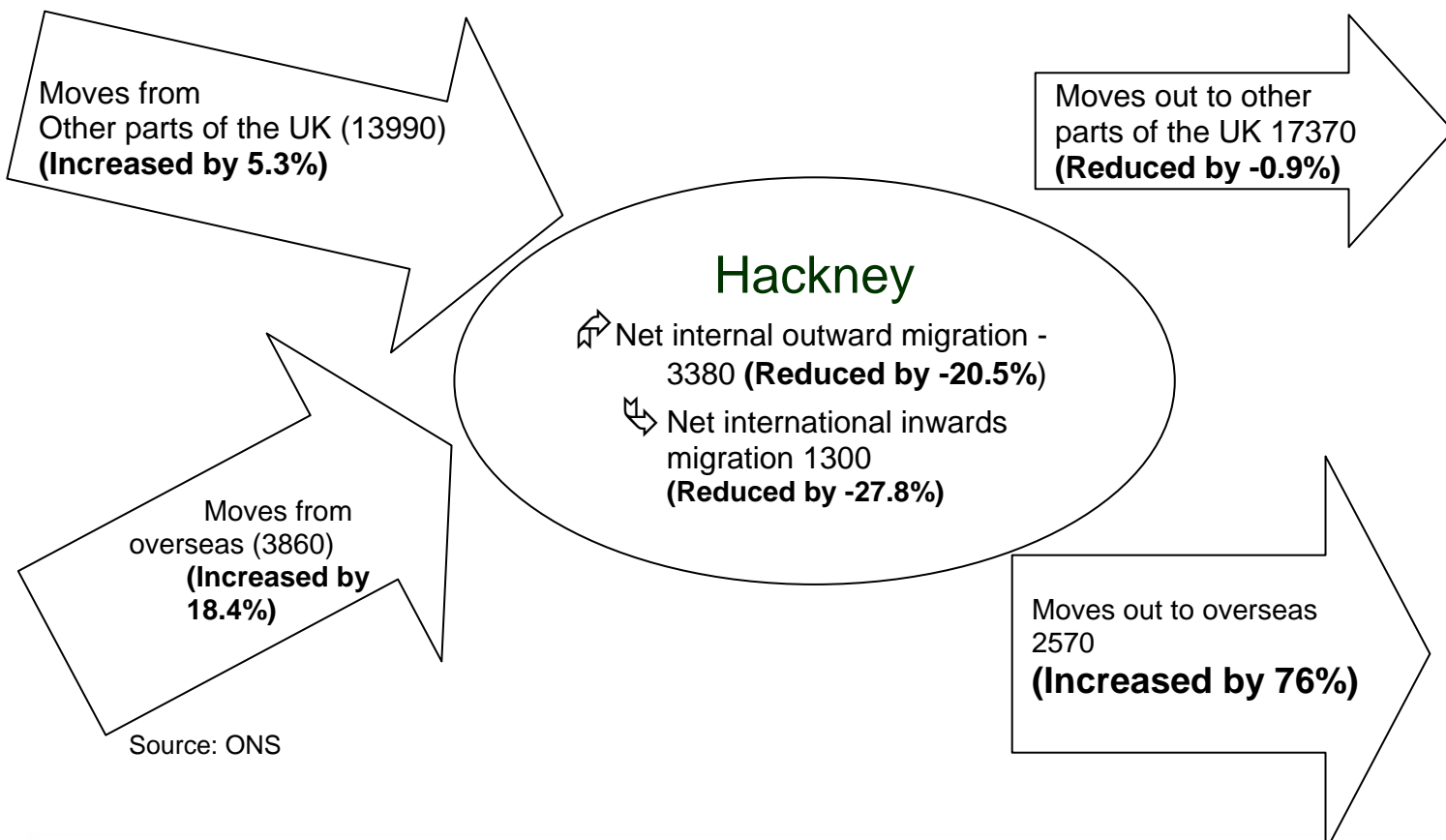
Hackney's Population

Migration

The components of population change analysis, provided by ONS mid-year population estimates, show that since 2005 the net outward migration has reduced by more than a third, from -2450 to -800 in 2008. This reduction, which includes both internal and international migration, has been mainly due to the increase in the number of moves into the borough from other parts of the UK (5.3%). Internal in-migration (13990) continues to be the predominant part of all in-migration, just over four times higher than the number of international moves into the borough (3860).

Considering the internal and international moves between 2005 and 2007 separately, although there was a 76% increase in the number of international out-migrants (1110), the combined effect of increases in internal and international in-migrants and the reduction in internal out-migrants, resulted in the overall reduction in net migration loss. Internal and international moves into the borough increased by 5.3% and 18.4% respectively, while the number of out-migrants to other parts of the UK dropped slightly by -0.9% (Table 8). International moves out of the borough increased by almost 80% (2570) since 2005 (1460), in line with the observed patterns in London and UK.

Figure 7: Migration into and out of Hackney in 2007 (compared to 2005)



Hackney's Population

Table 8 Migration in Hackney since 2005

	2005-2006	2006-2007	2007-2008	Change 2005 - 2007	% Change 2005-2007	Change 2005 - 2008	% Change 2005-2007
Population at beginning of Year	207150	208350	209700	1200	0.6%	1350	1.2%
Live births	4,470	4520	4400	50	1.1%	-120	-1.6%
Deaths	1,240	1160	1110	-80	-6.5%	-50	-10.5%
Natural population change	3200	3360	3300	160	5.0%	-60	3.1%
Internal inward migration	13,280	13990	15600	710	5.3%	1610	17.5%
Internal Outward migration	17,530	17370	17600	-160	-0.9%	230	0.4%
Net Internal migration	-4,250	-3380	-2000	870	-20.5%	1380	-52.9%
International inward migration	3,260	3860	N/A	600	18.4%	N/A	N/A
International outward migration	1,460	2570	N/A	1110	76.0%	N/A	N/A
Net International migration	1,800	1300	N/A	-500	-27.8%	-130	N/A
Net migration (Internal and International)	-2,450	-2,050	-800	400	-16.3%	1250	-67.3%
Net population change	1200	1300	2600	100	8.3%	1300	116.7%
Population at end of Year	208350	209660	212200	1310	0.6%	2540	1.8%

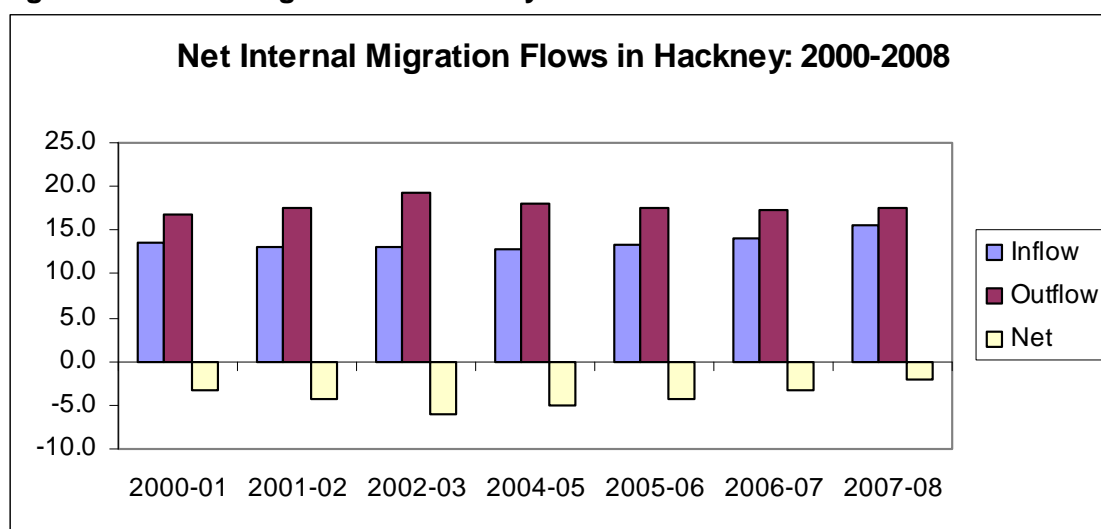
Source: ONS Components of change analysis 2005-2008

The increase in the number of internal moves into the borough is in line with the London wide migration patterns of record high internal inflows since 1984 and lowest internal outflows since 1998-99, resulting in London's lowest net internal outflow of -45K since 1995-96 (data from International Passenger Survey). Similarly, in Hackney the number of moves out of Hackney to other parts of the UK have more than halved (-2000) since 2005. There has also been a significant increase in international outflows, resulting in reduced

Hackney's Population

net international inflows into Hackney (1300), a similar pattern to that in London (118K) and UK as a whole².

Figure 8: Internal Migration in Hackney: 2000-2008



Source: ONS

Components of change analysis 2005-2008

Table 9: Internal Migration Flows

Internal Migration	2000-01	2001-02	2002-03	2004-05	2005-06	2006-07	2007-08
Inflow	13.5	13.2	13.1	12.9	13.3	14.0	15.6
Outflow	16.7	17.6	19.2	18.0	17.5	17.4	17.6
Net	-3.2	-4.4	-6.1	-5.1	-4.3	-3.4	-2.0

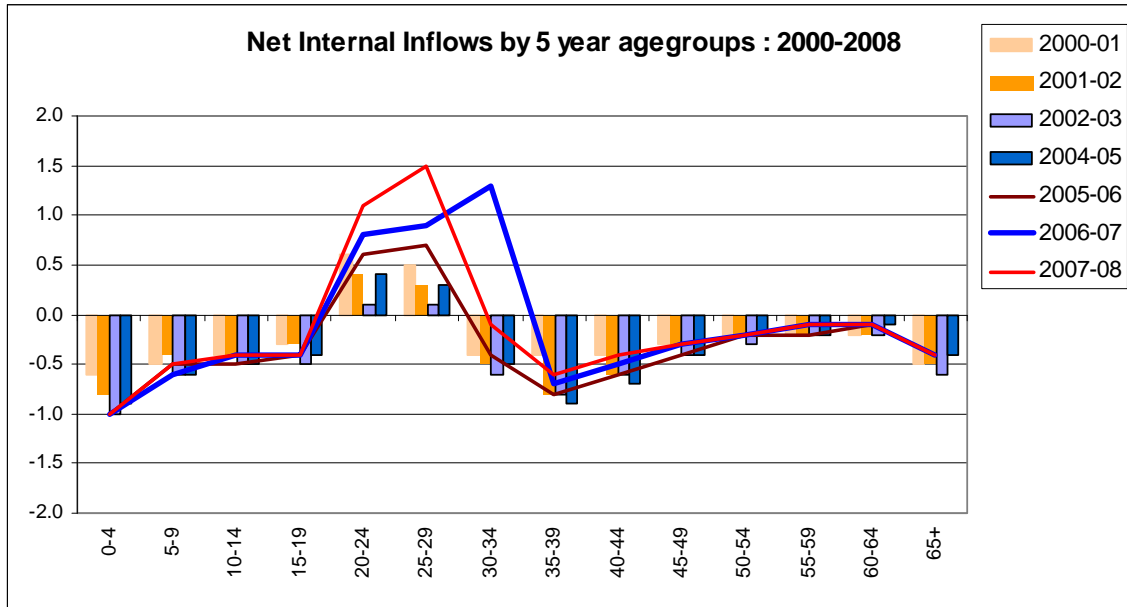
Source: ONS

Data from the ONS on internal migration flows, show a decline in the number of families between 2000 to 2004, apparent from the increasing net losses in the 0-4, and older age groups (35-39 and 40-44). The number of younger migrants (20-24 and 25-29) initially declined between 2000 and 2003, but increased sharply since then reaching its highest peak (1500) in 2008. The patterns also show that between 2005 and 2006 the number of migrants in the 30-34 year age groups increased sharply.

² London's Internal (UK) Migration Flows: 2001-08 – DMAG Update (16-2009) – November 2009

Hackney's Population

Figure 9: Net internal migration flows by quinary age group, 2000-2008



Source: ONS Internal migration by 5 year age groups 2000-2008

Overall since 2000, the borough has gained a large number of younger migrants (20-34) and those aged 55+, while the majority of (internal) outflows have been by families (apparent by the net losses in the 0-4, 15-19 and 35-39 age groups).

Table 11: Net Internal Migration by Age

Year	All ages	0-4	5-9	10-14	15-19	20-24	25-29	30-34
2007-08	-2	-1	-0.5	-0.4	-0.4	1.1	1.5	-0.1
2006-07	-3.4	-1.0	-0.6	-0.4	-0.4	0.8	0.9	1.3
2005-06	-4.3	-1.0	-0.5	-0.5	-0.4	0.6	0.7	-0.4
2004-05	-5.1	-0.9	-0.6	-0.5	-0.4	0.4	0.3	-0.5
2002-03	-6.1	-1.0	-0.6	-0.5	-0.5	0.1	0.1	-0.6
2001-02	-4.4	-0.8	-0.4	-0.4	-0.3	0.4	0.3	-0.5
2000-01	-3.2	-0.6	-0.5	-0.4	-0.3	0.6	0.5	-0.4
2000-2008	-37.50%	66.67%	0.00%	0.00%	33.33%	83.33%	200.00%	-75.00%

Year	35-39	40-44	45-49	50-54	55-59	60-64	65+
2007-08	-0.6	-0.4	-0.3	-0.2	-0.1	-0.1	-0.4
2006-07	-0.7	-0.5	-0.3	-0.2	-0.1	-0.1	-0.4
2005-06	-0.8	-0.6	-0.4	-0.2	-0.2	-0.1	-0.4
2004-05	-0.9	-0.7	-0.4	-0.2	-0.2	-0.1	-0.4
2002-03	-0.8	-0.6	-0.4	-0.3	-0.2	-0.2	-0.6
2001-02	-0.8	-0.6	-0.3	-0.2	-0.2	-0.2	-0.5
2000-01	-0.4	-0.4	-0.3	-0.2	-0.2	-0.2	-0.5
2000-2008	50.00%	0.00%	0.00%	0.00%	-50.00%	50.00%	-20.00%

Hackney's Population

Population by Ward

The average ward population within the borough is 11,756, a 10% increase since 2001 (10,674). According to the latest official ward data, almost 70% of this increase was in 4 wards: Cazenove (23.4%), Clissold (15.4%), Springfield (9.4%) and Leabridge (8.8%). Two other sources of data (GLA projections and LBH's Mayhew Study) also highlighted Dalston, Hoxton, Springfield, Haggerston and Queensbridge, as the wards with the highest population growth. Cazenove is now the most populated ward having 2,021 more people than Brownswood, the ward with the fewest residents.

The three sources of population considered were: ONS 2007 mid-year estimates, 2007 projected population from the GLA's 2008 round projections and the mid-2007 population figures from the Mayhew Study. Although the total population increase in the borough ranged from 3.4% (ONS) to 10% (Mayhew Study), all three sources highlighted Cazenove (15% - 28%) with the highest population increase since 2001.

The geographical distribution of the population growth, according to LBH's Mayhew Study, is similar to that found by the ONS figures, highlighting Cazenove, Springfield, Haggerston and Queensbridge as the 4 wards with the highest increases (52% of the total increase).

Hackney's Population

Table 12: Population increases by ward, 2001-2007

Ward	2001	2007 ONS	2009 GLA	% Change 2001-2007 (ONS)	% Change 2001-2007 (GLA)	% Change 2001-2007 Mayhew Study
Cazenove	10504	11,488	11,442	15.2%	13.9%	27.6%
Clissold	10433	10,731	11,106	10.1%	8.3%	10.0%
Springfield	10854	11,150	11,258	9.4%	3.7%	19.4%
Leabridge	9863	10,627	11,476	8.8%	12.0%	8.9%
Haggerston	10376	11,427	12,562	8.3%	10.7%	17.3%
Stoke Newington Central	10143	10,468	11,333	7.9%	8.6%	13.4%
Queensbridge	10165	11,831	11,561	7.2%	6.4%	20.7%
Chatham	10722	11,873	11,911	6.6%	5.6%	11.1%
De Beauvoir	9932	10,945	11,772	6.6%	12.4%	16.5%
Dalston	10356	11,241	11,962	5.8%	13.2%	13.1%
Hackney Downs	10294	10,591	11,472	3.5%	10.6%	9.9%
Hackney Central	10290	10,901	10,962	3.3%	1.1%	10.8%
Hoxton	10696	10,960	12,417	2.6%	13.4%	14.7%
Lordship	11288	10,970	12,366	0.8%	7.4%	3.5%
Victoria	12065	10,239	13,100	-1.9%	-7.3%	6.6%
New River	11515	11,373	12,197	-3.2%	-2.0%	5.1%
King's Park	10973	10,652	11,379	-4.6%	2.5%	2.1%
Wick	11027	10,084	11,030	-7.1%	16.7%	-1.7%
Brownswood	11315	12,105	12,057	-10.9%	-2.2%	-13.7%
Total	202811	209656	223363	3.4%	6.9%	10.0%

Sources: ONS 2007 mid-year estimates, GLA 2008 round projections (Low), LBH Mayhew Study

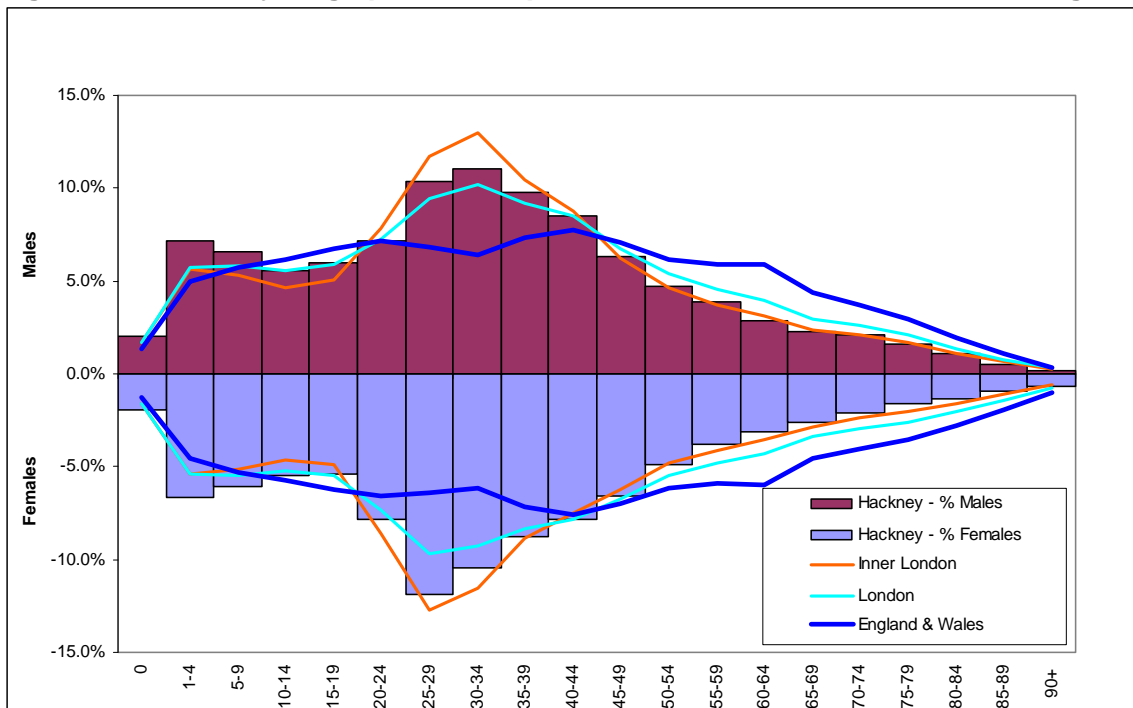
Population density (the number of people per hectare of land) remains high in Hackney when compared to other boroughs in London, ranking third behind Kensington & Chelsea and Islington. The borough has 11,027 people per square kilometre, well above the London average of 4679.

Hackney's Population

Age Profile

The population pyramid below presents the latest figures from the 2008 ONS population estimates by age group and gender, highlighting Hackney as a young borough. With 26.4% of its population under 20, Hackney is ranked the second youngest borough, after Newham (29.5%), among inner London boroughs. This is higher than both London and Inner London averages of 23.9% and 22% respectively. Hackney continues to have lower numbers of people aged 55+ (15.4%) compared to London (20.4%), Inner London (16.6%) and England and Wales (28.1%).

Figure 10 - Hackney's age profile compared to Inner London, London and England & Wales



Source: ONS 2008 Mid-year estimates

The population of 20-30 year olds also continues to be lower than most other inner London boroughs, whilst the populations of those aged under 5 (8.9%) and under 15 (20.7%) years old remains higher than the national (6.1%, 17.5%) and regional averages (7.2%, 18.2%).

Hackney's Population

Table 13: Hackney's age profile

Age	Total	% of Population	Age	Total	% of Population
0-4	18900	8.9%	45-49	13700	6.5%
5-9	13400	6.3%	50-54	10200	4.8%
10-14	11700	5.5%	55-59	8100	3.8%
15-19	12100	5.7%	60-64	6400	3.0%
20-24	16000	7.5%	65-69	5100	2.4%
25-29	23700	11.2%	70-74	4600	2.2%
30-34	22800	10.7%	75-79	3400	1.6%
35-39	19600	9.2%	80-84	2600	1.2%
40-44	17500	8.2%	85 and over	2500	1.2%

Source: Mid-Year Estimates 2008, Office of National Statistics

Ethnic and Cultural Diversity

Overall according to ONS, the BME population has reduced (40.7% to 38.2%) since 2001, whilst the White population has increased from 59.4% to 61.8%.

The projected figures (for 2007) from the GLA however, show a different pattern of reduced White population (59.5% to 58.7%) and a larger BME population (from 40.5% to 41.3%) since 2001.

Table 14: Ethnic groups, 2001

Ethnicity	Hackney	Inner London	London	England and Wales
White	59.4 %	65.7 %	71.2 %	91.3 %
Mixed	4.2%	3.9 %	3.2 %	1.3 %
Asian or Asian British	8.6%	10.6 %	12.1 %	4.4 %
Black or Black British	24.7%	16.4 %	10.9 %	2.2 %
Chinese or other Ethnic Group	3.2%	3.4 %	2.7 %	0.9 %

Source: Census 2001

Hackney's Population

Table 15: ONS Ethnic groups, 2007

Ethnicity	Hackney	Inner London	London	England and Wales
White	61.8%	65.7%	71.2%	91.3%
Mixed	4.5%	3.9%	3.2%	1.3%
Asian or Asian British	9.6%	10.6%	12.1%	4.4%
Black or Black British	20.9%	16.4%	10.9%	2.2%
Chinese or other Ethnic Group	3.2%	3.4%	2.7%	0.9%

Source: ONS population estimates by ethnic group Mid-2007

Table 16: GLA projections: Ethnic groups, 2007

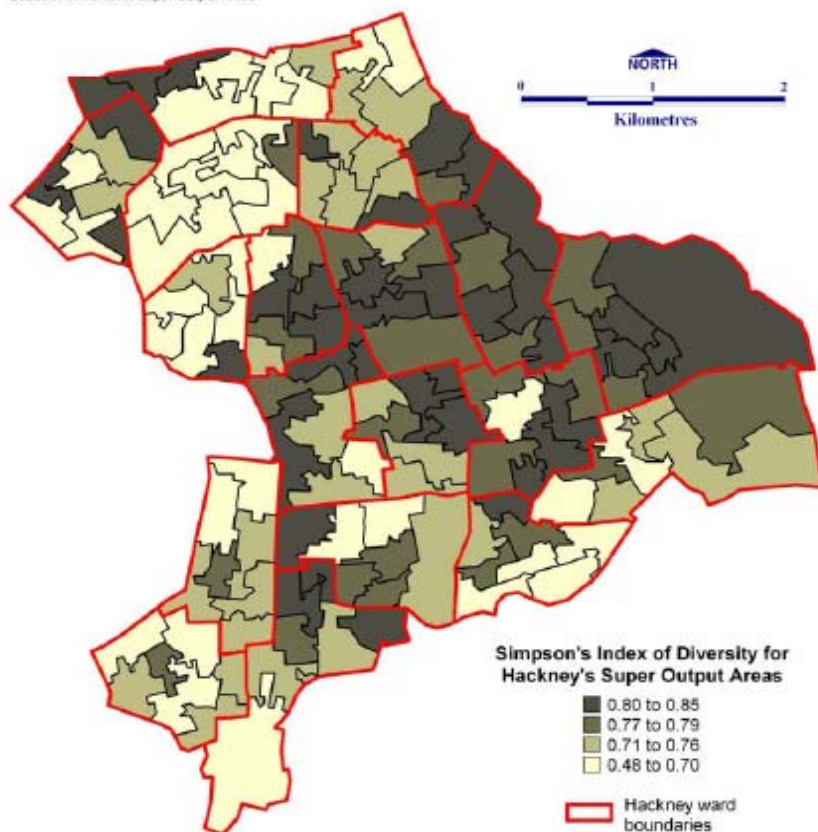
Ethnicity	Hackney	Inner London	Outer London	Greater London
White	58.7%	63.4%	68.3%	66.3%
Asian or Asian British	7.6%	10.1%	19.1%	29.2%
Black or Black British	26.4%	24.5%	10.9%	13.8%
Chinese or other Ethnic Group	7.4%	8.3%	12.5%	20.8%

Source: GLA 2008 round Ethnic Group population projections

Hackney's Population

Figure 11: The Simpson's ethnicity index

Based on lower level Super Output Areas



Ethnicity maps highlight patterns of spatial distribution of various groups within the borough (Figures 1.5-1.8). Numerous historical, social and economic factors account for these arrangements.

Over 70% of residents in west Hackney wards such as Lordship, New River and Clissold are from White ethnic backgrounds (see Figure 1.5). The east of the Borough has a high concentration (counted here as 32% and above) of people from Black ethnic groups, particularly in the wards of Kings Park and Wick (Figure 1.6). Finally, the Asian population of Hackney is primarily settled in three wards, Leabridge, Hackney Downs, and Cazenove.

A number of smaller national and cultural communities are found in Hackney as shown in Figures 1.7 and 1.8. The Orthodox Jewish community represent an estimated 8% of the population³ and are located primarily in the north of the borough, in the wards of Brownswood, New River and Springfield (Figure 1.7). The Turkish community are distributed fairly evenly throughout the borough (Figure 1.8) and people born in Turkey make up 5% of Hackney's residents.

Hackney's Population

Religion

According to the 2001 Census, slightly less than 73% of Hackney's population profess a religious belief. This is lower than the London average of 75.7% and the national average of 77%. A higher proportion also state that they do not belong to any religion indicating a more secular society in this borough than is the regional and national norm.

It is important to note that the question on religious beliefs in the Census was optional. 12% of returned forms from Hackney chose not to state an answer, the second highest level of 'no answer' to this question in England & Wales. Research indicates that this low level was due to many Charedi/Orthodox Jewish people declining to respond. Therefore, the actual size of the Jewish community is estimated to be larger than that calculated by the Census, likely well over 7% of the population.

Close to half (46.6%) of Hackney's residents identify their religion as being Christian, a lower level than that found in London and England & Wales. The borough does, however, have comparatively larger Muslim, Jewish and Buddhist populations.

Table 17: Religion

Religion	Hackney	London	England and Wales
Christian	46.6%	58.2%	71.8%
Buddhist	1.1%	0.8%	0.3%
Hindu	0.8%	4.1%	1.1%
Jewish	5.3%	2.1%	0.5%
Muslim	13.8%	8.5%	3.0%
Sikh	0.9%	1.5%	0.7%
Other Religion	0.6%	0.5%	0.3%
No religion	19.0%	15.8%	14.8%
Not stated	12.0%	8.7%	7.7%

The religions practised in Hackney often also echo particular geographic ethnic distributions, for example Springfield in north Hackney has a high concentration of residents stating Judaism as their religion, whilst Leabridge which has a high proportion of Asian residents also has the largest percentage of Muslims in the borough at 21 per cent.

Hackney's Population

Table 18: Religion by Ward

Ward	Christian	Jewish	Muslim	Other religions	No religion	Religion not stated
Brownswood	45.9	3.7	13.4	4.2	22.3	10.5
Cazenove	32.0	13.2	19.7	3.5	17.0	14.6
Chatham	53.8	0.7	14.3	3.8	17.4	10.0
Clissold	44.0	1.6	13.2	3.9	28.0	9.4
Dalston	49.2	1.8	13.9	3.8	21.1	10.2
De Beauvoir	55.9	1.2	11.1	2.8	18.5	10.6
Hackney Central	49.8	2.0	14.2	4.2	20.4	9.5
Hackney Downs	45.0	2.1	15.6	4.6	22.5	10.2
Haggerston	52.6	0.9	15.4	3.2	18.0	10.0
Hoxton	58.1	0.8	12.2	2.2	17.1	9.6
King's Park	53.0	0.8	14.2	3.2	14.8	14.0
Leabridge	41.9	1.5	21.0	4.0	21.6	10.0
Lordship	33.3	17.2	8.6	2.9	19.0	19.0
New River	34.1	20.4	13.3	3.0	13.2	16.1
Queensbridge	53.0	1.0	13.0	2.6	19.8	10.6
Springfield	32.3	23.5	12.4	3.0	10.9	17.8
Stoke Newington	41.1	2.4	15.4	4.2	26.5	10.6
Central						
Victoria	52.4	1.6	12.2	3.0	19.4	11.4
Wick	58.3	1.4	9.6	2.6	15.7	12.5

Source: Census 2001