

REPORT OF CHILDREN AND YOUNG PEOPLE SCRUTINY COMMISSION		
YOUNG PEOPLE IN HACKNEY NOT IN EDUCATION, EMPLOYMENT OR TRAINING (NEET). Children and Young People Scrutiny Commission 7 th February 2007	Classification Public	Enclosures Appendix 1 NEETs Review Terms of Reference Appendix 2 Contributors and site visits undertaken Appendix 3 Connexions Monitoring Information Appendix 4 NEET breakdown table
	Ward(s) affected All	

1 CHAIR'S FOREWORD

- 1.1 The dramatic improvements of Hackney's education system are noted and celebrated. Amongst a number of other significant achievements, Hackney has been recognized as one of the top ten most improved Local Education Authorities in the country for the period 2002 to 2005. More than half the pupils in Hackney schools attained five or more A*-C GCSE grades in the 2006 GCSE results, which is an improvement by two thirds on the 2002 figures. In addition, Hackney Education Services received a 'good' rating in the recent Joint Area Review.
- 1.2 Despite these major steps forward, however, a small but significant proportion of Hackney young people continue to leave statutory education without reaching their full potential, and fail to progress on to positive destinations within employment, training or further education. These young people join the NEET group, or those 'Not in Education, Employment or Training'.
- 1.3 Young people become NEET for a number of diverse reasons, ranging from difficulties arising from a system that does not adequately meet their needs (for example, young people with learning difficulties and disabilities who find there is inadequate provision of suitable work experience placements) to an assortment of social issues (including factors such as teenage pregnancy or a challenging home environment). These barriers differ for each individual, and often the young person will face a number of complex issues simultaneously.
- 1.4 As one cannot generalize about the root cause of young people joining the NEET group it is also not possible to offer quick and simple solutions.

However, these young people must not be forgotten, and the good work currently being undertaken to meet their needs must be continued and built upon. Whilst celebrating our successes, we must also seek to ensure that all young people in Hackney are supported into relevant and fulfilling roles post-16.

- 1.5 This report highlights a number of areas where it is believed improvements could be made, and puts forward recommendations to the Learning Trust, the Council and the Connexions Service.

2 INTRODUCTION

- 2.1 This review was prompted by a number of considerations, including:

- 2.1.1 **Findings from the 2006 Joint Area Review (JAR):** The 2006 JAR of Hackney Children and Young People Services deemed 'Economic Well-Being', the outcome area under which NEETs fall, and the level of support for young people to help them prepare for work to be adequate overall. However, the following areas were highlighted as in need of improvement:

- Although the numbers of young people with positive destinations at the age of sixteen were increasing, many were changing direction and courses a year later.
- The numbers of young people whose destinations were unknown to Connexions services was the highest in East London at over 16% in November 2005.
- Strategies and systems for tracking and monitoring NEET young people were not sufficiently developed.
- There was insufficient collaboration between Connexions services, the youth service and colleges in providing advice and support to young people.

- 2.1.2 **Current LBH priorities:** Reducing worklessness for 18-24 year olds in the Borough has been identified as a priority outcome to meet the Economic Development targets of the Local Area Agreement, in alignment with the overall Community Strategy.

- 2.1.3 **New Government requirements:**

- The responsibility for NEET young people will pass from Connexions Services to Local Authorities in early 2008. New

Children's Trust arrangements will mean that Youth Support Teams, under the Youth Service, will take a frontline role in service delivery, working with a range of partners in the Voluntary and Community Sector.

- The Local Authority will also take the lead on NEET figures. As of the end of November 2006 NEETs are a Local Authority Public Service Agreement (PSA) target, and each Local Authority is required to contribute to reducing the proportions of 16-18 year olds who are NEET by 2% from a 2004 baseline by 2010. LBH will contribute to this target by reducing its NEET percentage to 11.5% by 2010.

2.2 Currently, the main statutory provision for NEET young people in the Borough is delivered through the Connexions Service, which has been in existence in Hackney since April 2002. The prime function of the service is to help young people make a smooth transition to adulthood, working with key partners to reduce the numbers of NEET young people. The Service is delivered by a network of Personal Advisers and can be divided into two broad categories, the universal service and the targeted service. The targeted service is primarily the delivery of intensive support to vulnerable young people who face barriers that prevent them from entering into employment and training and this service is delivered by Personal Advisers employed by the London East Connexions Partnership. The universal service is essentially the delivery of impartial information, advice and guidance on a range of personal development issues with a focus on careers advice to young people in schools and colleges and those who have left education. Hackney Council contracts with Careers Enterprise LTD to deliver the universal service in Hackney.

2.3 The statistics in Appendices Three and Four were supplied by Connexions services. Some headline figures derived from the statistics include the following:

- At the end of November 2005 adjusted NEET figures¹ were 16.8%. Targets were set for November 2006 to attain an NEET figure of 14.1%. Following a considerable drive on the part of the Careers Service, by November 2006 the adjusted NEET figures were 12.5% (or 12.7% using the new Local Authority measurement, which no longer counts young people undertaking personal development opportunities as in Education, Employment or Training (EET)).

¹ Adjusted NEET figures are amended based on DfES research that indicated that for those young people whose currency had lapsed from an EET destination, 92% were still likely to be EET and the remaining EET were likely to be NEET, whereas for those whose currency had lapsed from a NEET destination 58% would still be NEET and 42% would be EET.

- The actual numbers of NEET have reduced from 621 in November 2005 to 565 in November 2006.
- In November 2006 the Unknown figures were 10.5%, a reduction of 5.7% since November 2005. The November 2006 target was 10%.
- 76.1% of the November 2006 NEET Cohort have been NEET for less than 20 weeks, leaving 23.9% who remained in the NEET group for more than 20 weeks.
- The percentage of young people in “learning” destinations (EET) has risen from 64.2% in November 2005 to 74.4% in November 2006, a 15.8% increase over the period.
- The percentage of 16-19 year olds with learning difficulties and disabilities in EET stood at 63.1% in November 2006, against a figure of 75.2% for all 16-19 year olds in EET.
- There were 391 interventions with young people in compulsory education in November 2006, and 1191 interventions with young people who had completed compulsory education.
- Of the 565 young people in the NEET group in Hackney in November 2006, 491 were available to the labour market. 74 were not available to the labour market as they fell into the following categories; young carers, teenage parents, illness, pregnancy, religious grounds, unlikely to be economically active and other.

2.4 The terms of reference for the review can be viewed in Appendix 1.

2.5 **Method**

The Commission appointed a sub-committee of Members to lead the enquiry, namely: Cllr Chris Kennedy, Cllr Chris McShane, Cllr Feryat Demirci and Cllr Muttalip Unluer. Members from this group visited several organisations working with NEET young people in Hackney, including those responsible for statutory provision and community and voluntary sector organisations. They also arranged for people with first-hand knowledge of the current work being done with NEET young people to attend formal Commission meetings to give evidence. In addition, contact was made with a number of other relevant organisations via telephone, letter and email to request additional information. The details of visit and witnesses are given in Appendix 2.

The Commission is grateful to all who contributed in any way to its work and hopes that the recommendations put forward will assist in giving

support to young people who are NEET, or are at risk of becoming NEET, their parents and carers, and all those working to support them.

3. SUMMARY AND RECOMMENDATIONS

3.1 The Commission and Working Group considered a large number of wide-ranging issues relating to NEET young people. In compiling the findings evidence gathered has been grouped into key themes and sub-themes, and under Section 6 recommendations are presented with the relevant findings to provide context.

3.2 Main themes identified were as follows:

The forthcoming transfer of responsibility for NEET young people from the Connexions Service to the Local Authority Children and Young People Directorate and the Youth Services in March 2008. Within this topic Members highlighted the follow areas of interest; the future service specification and the management arrangements for the transition, the building and staffing implications, the Connexions brand, and the ongoing monitoring of NEET statistics.

The number of young people in the Borough whose destinations were 'Unknown' according to Connexions monitoring information.

14-19 Education provision in Hackney, focusing on the Universal Service Provision for careers, training and further education information, advice and guidance. The Commission also considered the continued expansion of sixth form provision within the Borough, as well as the forthcoming changes to the curriculum in terms of the new vocational diplomas in Year 9, and the pressures both these factors would place upon Careers Service provision.

Training provision within the Borough, focusing particularly on Work Based Learning Providers, E2E programmes, Apprenticeships, and the possibilities identified for closer working links between schools and Work Based Learning Providers, especially in terms of referrals.

The opportunities for employment and work experience available to young people in the Borough. Members heard evidence from representatives from Working Links, provider of the New Deal for Young People in Hackney, and visited Stoke Newington School to ask Year 10 and 11 students about the work experience they had undertaken. In addition, Members considered the additional challenges facing young people with Learning Difficulties and Disabilities seeking employment and work

experience, as well reviewing the opportunities for all young people arising from the 2012 Olympics and other significant regeneration projects.

Voluntary and Community Sector (VCS) work with NEET young people, and issues surrounding the provision of information to VCS project workers, private sector fundraising and gaps identified in provision.

Access to information, advice and guidance for parents and carers of NEET or potential NEET young people, and best practice taking place on this issue elsewhere.

3.3 ***Recommendations***

Recommendation one

The Commission recommends that the Children and Young People Services Directorate establish specification for the delivery in 2008 of services currently provided by the Careers Company, including a timetable for key actions leading up to this transition, and present this as a report to the Commission by October 2007.

This report should include details of a suitable central location to replace the current Dalston Connexions Access Shop when the lease arrangement terminates at the end of March 2008.

Recommendation two

The Commission requests that the Children and Young People Services Directorate bring a report to the Commission by October 2007 setting out the means by which the Personal Adviser approach used successfully by the Connexions Service will be retained in the new structure of youth provision in 2008, in line with the Youth Matters Green Paper recommendations.

Members believe that consideration should be given to how to preserve the strong working links between the Intensive Support Personal Advisers, as part of the new Youth Support Teams, and the Personal Advisers involved in the delivery of the universal service through the new Careers Contract.

Recommendation three

The Commission requests that a report by the Children and Young People Services Directorate outlining proposals to maximise the potential of the Connexions Brand within the context of the new Youth Support Teams be presented to the Commission by January 2008 or sooner. This should take

into account recent government guidance on the use of the Connexions brand.

Recommendation four

The Commission recommends that the Cabinet Member for Children and Young People should consider commissioning a piece of work to explore the value of developing a standard set of local performance indicators and targets based around raw numbers rather than percentages, in addition to continuing to collect NEET statistics in accordance with legal requirements. These indicators should reflect a wider definition of 'positive destinations' than simply EET, for example a gap year spent travelling or undertaking voluntary work.

Recommendation five

The Commission recommends that:

- a) Statistics showing the effect on 'Unknown' figures of the new 'door-knocking' initiative being undertaken by the Connexions Service be presented to the Commission no later than September 2007, or earlier if they are available.
- b) data sharing protocols be developed to ensure that information regarding the destinations and contact details of all pre-16 Hackney-resident young people educated outside the borough, including those educated outside the catchment area for London East Connexions Partnership, are made available to Hackney Connexions Service leading up to and on their leaving full time education. The Commission requests that the Cabinet Member for Children and Young People satisfy herself that such arrangements are adequate to ensure that no child is left behind.
- c) the Connexions Personal Adviser funded to support Hackney young residents educated outside the borough ensure that all students under this remit receive information regarding how to access the Connexions Service within Hackney before leaving mandatory education at 16.

Recommendation six

The Commission recommends that the Cabinet Member for Children and Young People consider the appropriateness of undertaking further analysis of the FE Sector Specific Personal Advisor Pilot Project (Carshalton, Merton and Croydon Colleges and the South London Connexions Partnership) to establish whether a similar approach would be effective in Hackney.

Recommendation seven

The Commission recommends that the Authority develop proposals for any further funding that may be required to meet the increased need for Connexions Service provision resulting from additional sixth form provision and changes to the curriculum.

The Commission understands that such funding allocation is determined by GOL using a national formula, and the Chair proposes to explore how concerns may be raised with the appropriate government department, in consultation with the Cabinet Member for Children and Young People and the Chief Education Officer.

Recommendation eight

The Commission recommends that, as the largest employers in Hackney, LBH, the Learning Trust and the City & Hackney PCT take the lead in identifying suitable Apprenticeships placements within their own organisations to help meet the high need for extra Apprenticeship placements within the Borough.

It is accepted that there is a need to further consider the implications and how this should best be achieved. To this end, the Commission requests that a feasibility study setting out the means of moving forward be presented to the Commission by March 2008.

The Commission believes the matter may be most appropriately considered under the auspices of Team Hackney and encourages the Chair of the Children and Young People Partnership Board (CYPPB) to take this matter up as appropriate, whether through the CYPPB or the Economic Development Partnership Board.

Recommendation nine

The Chair of the Children and Young People Scrutiny Commission proposes to consult with the Cabinet Member for Children and Young People in order to explore how best to support Work Based Learning Providers (WBLPs) in their attempts to locate employers willing to provide the practical training for additional E2E courses. The Commission understand that such responsibility currently falls to the Learning and Skills Council.

Recommendation ten

The Commission recommends that the Learning Trust work with schools to ensure the early identification of students suitable for Work Based Learning routes and the development of a referrals system of students expressing an interest to WBLPs.

The Commission believes that this would enable WBLPs to make early contact with these students, increasing the number of direct starts from school, decreasing stress for students around GCSE results time and lessening the chances of these young people being channelled into inappropriate FE courses that they are unlikely to complete. The Connexions Service should also encourage greater awareness of Work Based Learning programmes in schools, and this route should be presented as a positive option to young people, through careers guidance provision.

Recommendation eleven

The Commission recommends that:

- a) Hackney Homes identify named Housing Officers/points of contact for Working Links staff to access in their local area through the neighbourhood offices, and make this information available to both Working Links offices in the Borough.
- b) The East London and the City Mental Health NHS Trust, Sub 19 and the Drugs and Alcohol Team, City and Hackney Alcohol Service and the City and Hackney Primary Care Trust provide Working Links with the relevant documentation, guidance and contact details to meet their needs for collaborative working.

Recommendation twelve

The Commission recommends that the Learning Trust set out proposals to the Commission by October 2007 for standardising the work experience provision for Year 10 students across the Borough.

Members were impressed with the approach taken by Stoke Newington School to supporting students into relevant and beneficial work experience placements, and suggest that the Trust draw on this example, as well as other examples of best practice in the Borough.

Recommendation thirteen

The Commission wishes to receive a report by December 2007 detailing how the Authority proposes to work in partnership with the Borough's largest employers (including the PCT, TLT, the Community College Hackney and B6 Sixth Form College) to fully embed the work that the Commission understands is already ongoing within LBH to provide increased work experience opportunities to young people in the Borough.

The Learning Trust is requested to commit to working in partnership with the Council HR function in order to support the above recommendation.

Recommendation fourteen

The Commission fully supports the introduction of the WorkRight scheme within the Council, and urges officers to work with appropriate partners, including Hackney Recruitment Partnership, to develop the necessary policies and procedures for this scheme to become fully operational.

In the longer term the Commission hopes to see the WorkRight scheme adopted by all the Borough's largest employers (including the PCT, TLT, the Community College Hackney and B6 Sixth Form College).

Recommendation fifteen

The Commission recommends that, in addition to the excellent Olympic preparatory work being undertaken with young people in Hackney schools, the 2012 Team develop a strategy to engage the high proportion of Hackney's secondary school children educated outside the borough through increased joint working with the Youth Service, Connexions, and all other relevant statutory bodies including other host boroughs for the Games that provide education services to Hackney young people.

In addition, the Commission requests that Community Services and the 2012 Team work with schools and partners in the voluntary and community sector (VCS) to ensure that the full potential to engage young people through voluntarism at the 2012 Olympics is realised.

The Commission is mindful that it is imperative that all local stakeholder agencies are at the forefront of providing flexible and responsive training in response to the skills needs arising from regeneration opportunities such as the 2012 Olympics, and other major development impacting on the Borough. Construction, in particular, should be recognised as a key area for development.

Recommendation sixteen

The Commission recommends that:

- a) By April 2008 the Youth Service gather information from different Directorates regarding all youth projects the Council helps to support and undertakes a mapping exercise to reveal gaps/duplication in provision.
- b) By April 2008 the Children and Young People Services map informal provision in the VCS, working in consultation with the Voluntary Sector Liaison Group, Hackney's leading umbrella bodies for the Sector (HCVA and HVA) and drawing on Members' local knowledge of VCS provision to young people in their wards.
- c) This information, once collated, be made available to all relevant project workers, referral agencies, parents/carers and young people, and reported back to Commission Members.
- d) The Children and Young People Services obtain a detailed breakdown of the NEET profile in Hackney on a quarterly basis from monitoring information collected by the Connexions Service and make it easily accessible to all VCS projects undertaking work with this group to enable them to better target their work and resources.

Recommendation seventeen

The Commission requests an update on plans to extend the PAYP programme summer scheme provision to all school holidays, with some projects operating on a year round basis.

The Commission would also welcome a report detailing the mechanisms by which the PAYP programme confirms that all Hackney-resident young people receive the same provision, regardless of the Borough in which they access their education provider.

Recommendation eighteen

The Commission requests that the future contract for 2008 setting out the provision of services currently provided by the Careers Company include the following considerations:

- a) The development of a minimum standard for the information, advice and guidance that is available to parents and carers.

- b) Details of how parents and carers will be kept up to date on the careers advice and guidance being made available to young people.
- c) Details of how the selected careers service provider, the Council and any other relevant partners will work together to develop Parenting Information Point events in Hackney.
- d) Details of how Hackney schools will be encouraged to ensure they are communicating with parents and carers in the most effective way possible, and that they seek to develop more helpful communication techniques to parents and carers where appropriate.

4 FINANCIAL COMMENTS

- 4.1 The report does not make recommendations with a direct financial impact.
- 4.2 However, further feasibility work is proposed which will require internal resourcing (for example commissioning a piece of work to explore the value of developing a standard set of local performance indicators). The Head of Service will need to develop a work-plan to support delivery of the recommendations, within existing capacity. It is possible that the outcome of the feasibility studies/mapping exercises, as recommended in the report, result in identification of proposals for priority budget growth by Members in future budget cycles (the next earliest opportunity being 2008/09). However at this stage no specific growth is proposed or available to support delivery of the recommendations which must therefore be cost neutral.

The report recommends that suitable alternative accommodation is required for the Dalston Connexions Access Shop when the lease arrangement terminates at the end of March 2008. This should be managed between the Head of Service and Hackney Corporate Property and should proceed as a high priority given the lead in time to find suitable alternatives. Any property costs will need to be contained within the existing funding envelope for Connexions.

The Commission recommends that the Authority develop proposals for any further funding that may be required to meet the increased need for Connexions Service provision resulting from additional sixth form provision and changes to the curriculum. This will be managed via the Education Client (LB Hackney) although delivery of the modelling will be driven from our partners at the Trust.

Finally, the Commission requests an update on plans to extend the PAYP programme summer scheme provision to all school holidays, with some

projects operating on a year round basis. PAYP is grant funded and the plans will need to be contained within the £465,000 funding for 2007/08. From 2007/08 the funding is part of the pooled budgets directed to Team Hackney (under nationally driven 'Local Authority Agreement' pooling). We await the final decision on ring-fencing this grant to Youth, thereby enabling the commissioning of services.

5 COMMENTS OF THE MONITORING OFFICER

No legal comments on this report.

6 FINDINGS

6.1 Transition for Youth Services and the Connexions Service

6.1.1 *Transition Management*

Youth Matters (2005) and Youth Matters Next Steps (2006) clearly set out a new duty on Local Authorities to take the leading role in coordinating the provision of a range of opportunities and activities to young people. This new youth offer falls into four key areas: information, advice and support; activities and opportunities; targeted support; and participation and involvement. A range of service providers to young people will be affected by this transition.

Youth Services in Hackney currently perform poorly, due to a history of under-resourcing and unstable management. This was confirmed by the recent Joint Area Review inspection, and the service has been identified as in need of general restructuring.

As a response to local and national plans and priorities for Children and Young People's Services, Hackney Youth Services is being reshaped and four new integrated Youth Support Teams are being established with the aim of integrating some of core services offering services to vulnerable young people.

London East Connexions Partnership (along with all other Connexions Partnerships) will be dissolved by March 2008, and the responsibility for the delivery of Connexions Services will be transferred to LBH Children and Young People's Services and Youth Services. The current contract with Careers Enterprise LTD has been rolled over twice and now concludes in March 2008, in alignment with the transition of responsibility from Connexions to the Local Authority.

Hackney Children's Service is about to begin the process of defining the post-March 2008 Connexions universal service delivery model, with the aim of creating more localised and integrated arrangements for the delivery of careers information, advice and guidance services.

Members discussed the possibility of bringing Careers Contract in-house, but concluded that this was likely to be more expensive. Careers Services were privatised in 1996 and most contracts are now fulfilled by five or six major companies, of which Careers Enterprise Ltd is one. These companies have economies of scale that the Local Authority would be unable to replicate, leading to higher costs. Members did note, however, that in-house provision may lead to better working links between the Council and other providers, including the Learning Trust.

It was noted that Central London Connexions Partnership had already drawn up a specification for the tendering of their universal service.

6.1.2 *Building and Staffing Implications*

The universal service for those who have left education is primarily delivered at the Connexions Access Shop in Dalston Lane (a main shop front delivery point for young people and administrative offices). However the extension of the East London Line will mean that the services currently operating from these premises can not remain there in the long term. The current lease arrangement terminates at the end of the March 2008.

As the Careers Company do not know if they will have a contract for beyond 2008, they cannot look for new premises. However, it is certain that LBH will have to employ someone to provide these services and that they will need office space, so consideration should be given to this issue.

The Youth Matters Green Paper highlighted Connexions Personal Advisers as a strong point of the service that should be maintained post-transition. The Commission heard that Personal Adviser relationships were built over an extended period of time, often on an individual basis, and therefore were more likely to gain the trust of the young people. Members also heard that the co-location of some of the LECP Intensive Support Personal Advisers and Careers Enterprise LTD staff at the Dalston Lane Connexions Access Shop had been very successful, resulting in a joined-up and seamless service for young people and promoting the sharing of good practice.

Intensive Support Personal Advisers, who provide targeted support to young people on a number of issues that may cause barriers to education, employment and training, are currently employed directly by London East Connexions Partnership (LECP). It is anticipated that by the end of March

2008 all the Intensive Support Personal Advisers will be TUPED² to the borough and absorbed within these soon-to-be-established Youth Support Teams.

6.1.3 *The Connexions Brand*

The London East Connexions Partnership Best Value Review (2005) and the Youth Matters Green Paper noted that the Connexions brand was a strong asset, and was recognised by young people, and recommended that the Connexions name and branding be retained by any localised future service.

Member consultation with young people in Hackney corroborated this view, as all were able to identify the Connexions brand and the services offered in conjunction with it.

Guidance on the future of Connexions branding is expected from the DfES soon.

6.1.4 *Monitoring NEET figures*

Currently the Careers Contract is monitored on quarterly basis by the Local Authority against key outcomes and targets, such as the number of contacts with young people, the numbers of completed action plans, the numbers of young people placed in education, employment and training, and the number of completed Section 140 Assessments. Careers Enterprise LTD is also required to report on its work with educational establishments, local employers and training providers, and the professional development of its staff. The assistant regional manager for Careers Enterprise also presents a quarterly performance report to the Hackney Connexions Local Management Group.

NEET figures are measured on a monthly basis. Members heard that looking at the percentages of NEET young people in the Borough can be misleading, as the percentage of NEETs is dependent on the number of young people in the 16-18 cohort, which varies according to the numbers of young people who access education provision out of the Borough. When a young person is in education they are counted on the statistics of the Borough in which they are educated, but when a young person is NEET they are counted on the statistics of the Borough in which they are resident. As a high proportion of Hackney's young people are educated outside of the Borough this skews the figures as the NEET percentage will be calculated against a smaller group of young people in EET destinations in Hackney.

² Transfer of Undertakings Protection of Employment: TUPE 2006

Future increases in sixth form provision within the borough will increase the number of students in further education within the 16-18 age group who are educated within the Borough, which will reflect in the NEET statistics as a decrease in the percentage of NEET young people in the borough. It is therefore important to consider the actual numbers of young people who are NEET and not just percentages.

Connexions Partnership Monitoring Information categories do not always reflect the complex and chaotic lifestyles of some young people. Some destinations currently recorded as NEET may well be positive choices for young people, for example a young person taking a gap year before university.

In addition, from the end of November 2006 NEETs are a Local Authority PSA target, and engagement by young people in Personal Development Opportunities (PDOs), such as the government-funded Activities Agreement pilot, no longer count towards a reduction in NEET figures. Currently there are roughly 30 young people on Activity Agreements at any one time in the borough.

6.1.5 Recommendations

Recommendation one

The Commission recommends that the Children and Young People Services Directorate establish specification for the delivery in 2008 of services currently provided by the Careers Company, including a timetable for key actions leading up to this transition, and present this as a report to the Commission by October 2007.

This report should include details of a suitable central location to replace the current Dalston Connexions Access Shop when the lease arrangement terminates at the end of March 2008.

Recommendation two

The Commission requests that the Children and Young People Services Directorate bring a report to the Commission by October 2007 setting out the means by which the Personal Adviser approach used successfully by the Connexions Service will be retained in the new structure of youth provision in 2008, in line with the Youth Matters Green Paper recommendations.

Members believe that consideration should be given to how to preserve the strong working links between the Intensive Support Personal Advisers, as part of the new Youth Support Teams, and the Personal Advisers involved in the delivery of the universal service through the new Careers Contract.

Recommendation three

The Commission requests that a report by the Children and Young People Services Directorate outlining proposals to maximise the potential of the Connexions Brand within the context of the new Youth Support Teams be presented to the Commission by January 2008 or sooner. This should take into account recent government guidance on the use of the Connexions brand.

Recommendation four

The Commission recommends that the Cabinet Member for Children and Young People should consider commissioning a piece of work to explore the value of developing a standard set of local performance indicators and targets based around raw numbers rather than percentages, in addition to continuing to collect NEET statistics in accordance with legal requirements. These indicators should reflect a wider definition of 'positive destinations' than simply EET, for example a gap year spent travelling or undertaking voluntary work.

6.2 Unknowns: Data Sharing and Joint Working

6.2.1 Background

Every young person's record has a 'currency' which expires if they cannot be contacted within an allocated period of time. The currency of young people within education expires after one year without contact, whereas currency of young people who are NEET expires after three months with no contact. Young people are classed as 'Unknown' within the NEET monitoring figures if they cannot be contacted before their currency expires.

There are a high number of young people in Hackney whose current destinations are 'Unknown'. The November 2006 target for Connexions was to reduce this figure to 10%. In July 2006 'Unknown' figures stood at 17.2%, or 71.6% over target. The November figures saw an impressive and significant reduction to 12.5%. However, the number of Unknowns continues to be a concern within the Borough.

One main factor influencing the Unknown figures is the highly transient nature of the young population in Hackney. Members heard that young people frequently register at the centre and then move on within a few months without making further contact. This is particularly true of young people living in hostel accommodation. In addition, many young people cannot provide a landline telephone contact number, and instead give a mobile contact number which has often changed before a Personal Adviser can next make contact.

In the October 2006 half-term, the Connexions Service piloted a new 'door-knocking' initiative to contact young people after three unsuccessful attempts to contact them on the telephone numbers provided. This home visiting work was undertaken by Personal Advisers, two dedicated part-time employees, and some Teaching Assistants from the Learning Trust. Statistics showing the effect of this scheme were not yet available.

6.2.2 *Monitoring and Tracking*

The recent Joint Area Review (JAR) inspection identified data quality surrounding NEET young people as an issue for improvement and required that steps be taken to confirm the status of young people whose destination is currently Unknown. The Children and Young People Plan also highlighted improving the way information on children and young people is collected and shared as a priority, especially in the light of Hackney's highly mobile population.

Members heard that work is taking place across the London East Connexions Partnership (LECP) to increase the quality of the data available, through the development of a pan London Index. Currently, information is collected regarding all students educated in Hackney and this data is shared between all Connexions Services within the LECP through the Connexion database, CCIS. Data is not collected regarding students who are Hackney residents but are educated outside of the Borough, although they will appear on the database if they are attending another school within the LECP. Clients are added to the database if they are educated at B6 Sixth Form College and the Community College Hackney, even if they live outside of the Borough.

These arrangements mean that information on Hackney-resident students accessing out-of-borough education provision in boroughs that fall under North London Connexions Partnership, such as Haringey, and Central London Connexions Partnership, such as Islington, is not made available in Hackney. However, on leaving education, these young people become the responsibility of the borough in which they are resident, and this lack of prior information is unhelpful in tracking and monitoring their progress. Hackney-resident young people educated outside of the LECP catchment area often only become known when they call into the Connexions Centre to request assistance.

Hackney has a high number of out-of-borough migrations of young people to access education provision both pre and post 16. Strong correlations have been found between boroughs with large flows of young people across Borough boundaries to access education and high levels of NEETs and Unknowns. Members heard that a Connexions Personal Adviser has been funded through the Connexions Local Budget to identify and support Hackney young residents educated outside of the borough.

6.2.3 *Joint Working and Data Sharing*

Members heard that meetings have been held between Jobcentre Plus and Connexions to investigate working together to reduce Unknown clients.

The Commission also heard that, although excellent work was being done in supporting young parents back into education, the identification of teenage mothers was not straightforward. Significant funding has been allocated around the Teenage Pregnancy Strategy and it is hoped that numbers known to Connexions will soon improve. However, issues surrounding confidentiality prevented hospital staff from passing young mothers' details directly onto Connexions.

Research from Connexions Tees Valley, who have achieved a reduction of Unknowns from a baseline of 11.7% in November 2002 to a 6.4% in November 2005 (far exceeding their target of 9%), suggests that a key factor in their success in this area was developing robust information sharing protocols with the voluntary and community sector.

6.2.4 Recommendations

Recommendation five

The Commission recommends that:

- a) Statistics showing the effect on 'Unknown' figures of the new 'door-knocking' initiative being undertaken by the Connexions Service be presented to the Commission no later than September 2007, or earlier if they are available.
- b) data sharing protocols be developed to ensure that information regarding the destinations and contact details of all pre-16 Hackney-resident young people educated outside the borough, including those educated outside the catchment area for London East Connexions Partnership, are made available to Hackney Connexions Service leading up to and on their leaving full time education. The Commission requests that the Cabinet Member for Children and Young People satisfy herself that such arrangements are adequate to ensure that no child is left behind.
- c) the Connexions Personal Adviser funded to support Hackney young residents educated outside the borough ensure that all students under this remit receive information regarding how to access the Connexions Service within Hackney before leaving mandatory education at 16.

6.3 14-19 Education in Hackney

6.3.1 Universal Service Provision

Members heard that Connexions has a presence in every secondary school and FE College in the Borough. Schools are given a grant of £450 to create their own resource library, although the main resources library is held at Dalston Lane. Minimum provision for each student entails access to the Connexions resource library and participation in group work carried out by Careers Service at the school. In addition, Connexions Personal Advisers ensure that all Year 11 students educated within Hackney are aware of how to access the Connexions service for further support once they leave school.

Connexions also supports events run for students regarding further education opportunities. Members heard that an event would be taking place in February 2007 for Year 11 students to find out more about courses offered by colleges in the borough. Universities usually access students at school through the Aim Higher programme, assisted by Connexions.

Consultation with young people in the NEET category revealed differing experiences of careers advice and support received in various schools. Some young people claimed they had not received any one-on-one careers counselling, and had simply been directed toward a website for further advice. Others had been allocated individual time with a Connexions Personal Adviser, but had found that advice was over-generalised and that time available was limited. It must be noted, however, that these comments were drawn from a small group of young people, and cannot necessarily be taken as representative of the majority experience. Members heard from Connexions representatives that all school students were allocated a Connexions Personal Adviser in Year 11, but that some young people may slip through the net because of poor attendance or moving schools. Connexions Advisers seek to follow up such young people.

All the young people consulted were familiar with the Connexions brand and the services provided, and reported that leaflets and posters at school had ensured the service had a reasonably high profile amongst young people.

6.3.2 *Supporting Young People to Stay in Further Education*

Research has indicated that remaining in further education is the best protection for a young person against joining the NEET group at 18 years, while training offers some protection and immediate entry from school into employment offers virtually no protection (DfES: Rennison et al, 2005).

Young people who find themselves struggling with further education courses due to personal issues can access Connexions for individualised support from an Intensive Personal Adviser on a range of topics, including housing, finance, health and relationship advice. This support is usually targeted by identifying characteristics of learners that put them at higher risk of leaving college and joining the NEET group. However, a high level of retention success has been reported by a pilot project coordinated by Carshalton, Merton and Croydon Colleges and South London Connexions Partnership, which instead identifies college programmes where the chances of disengagement are higher than average and targets support at all students on that course.

Some young people consulted, who had left college midway through a course, suggested that a student mentor, or the opportunity to meet with college students on their selected course, would have been useful to them while they were still in Year 11. This would have helped them know what to expect in making the transition from school to further education, and would have given them further insight into whether the course they were

applying for was suitable. There has been some success with a similar scheme in Rotherham College, amongst others. A number of other colleges employ non-teaching staff members as mentors, usually on a part time basis.

Young people who find they have selected an inappropriate further education course and would like to transfer often find that, due to the fixed September/January starts, there is often a long period before they can start their selected course. This can lead to disengagement with the system and entry to the NEET group. The Learning and Skills Council is currently working with further education providers to investigate the possibility of rolling starts for selected courses.

6.3.3 Sixth Form Provision

An important consideration for the future is that the 16-18 cohort educated in Hackney is set to increase.

Currently sixth form provision in Hackney is offered by the Community College Hackney and the B6 Sixth Form College, as well as the following secondary schools; Cardinal Pole School, Our Lady's Convent High School, Skinners' Company's School for Girls and, as of September 2006, Stoke Newington School. Hackney Community College provides education for 15% of the total 16-18 cohort and the Sixth Form College Brooke House provides for 6%. A large number of Hackney students in the 16-18 age group are educated outside the borough. Learner migration is mainly to City and Islington College and the College of North East London. Students with SENs and other complex social needs are overly represented in the group accessing out-of-borough sixth form provision.

However, the introduction of the new Petchey and Bridge Academies, which will both have Sixth Forms, combined with the new sixth form at Stoke Newington School and the new Sixth Forms proposed for Clapton Girls' Technology College (2007) and Haggerston School for Girls (2010), will have a significant impact on the level of provision for post-16 Hackney students. In the longer term, the impact of the Building Schools for the Future project (six secondary and four special needs schools by 2012) must also be taken into account.

The growing number of 16-18 year old students educated within the borough will lead to a significantly increased need for Careers Service provision.

6.3.4 Changes to the Curriculum

Changes to the curriculum, as set out in the DfES 14-19 Education and Skills White Paper (2005), will mean that students in Year 9 will be offered the chance to study for vocational diplomas rather than GCSEs and A Levels, allowing students the opportunity for earlier specialisation where appropriate. By 2013 students across the country will be able to select from 14 different specialised diplomas, which will be gradually phased into the curriculum.

Hackney will commence by offering diplomas in Health and Social Care, Construction and the Built Environment, and Creative and Media Industries, all of which have been identified as key growth areas for employment locally. All Hackney secondary schools, including Academies and special schools, have now signed an Expression of Interest to pilot these diplomas, which will be delivered through the three geographical 14-19 partnerships encompassing all Hackney secondary schools.

Increased careers information, advice and guidance will be required to assist Year 9 students in making the appropriate choice between the new vocational diploma and a range of other available options. The delivery of the universal service in schools is currently more weighted towards Years 10, 11 and 12, in particular transitional work with Year 11 students.

There are currently roughly thirty staff working under the Careers Contract. Members heard that a predicted further 6 would be required to meet the increased need highlighted above.

6.3.5 Recommendations

Recommendation six

The Commission recommends that the Cabinet Member for Children and Young People consider the appropriateness of undertaking further analysis of the FE Sector Specific Personal Advisor Pilot Project (Carshalton, Merton and Croydon Colleges and the South London Connexions Partnership) to establish whether a similar approach would be effective in Hackney.

Recommendation seven

The Commission recommends that the Authority develop proposals for any further funding that may be required to meet the increased need for Connexions Service provision resulting from additional sixth form provision and changes to the curriculum.

The Commission understands that such funding allocation is determined by GOL using a national formula, and the Chair proposes to explore how concerns may be raised with the appropriate government department, in consultation with the Cabinet Member for Children and Young People and the Chief Education Officer.

6.4 Training Provision: Work Based Learning Providers

There are two training providers in Hackney who have the responsibility for providing Entry to Employment (E2E) programmes and Work Based Learning; Rathbone Community Industry and Springboard Hackney. Members heard that there is a general lack of provision in the Borough, especially for those young people with additional needs for support. This situation was compounded by the close of Workforce Charitable Trust some time ago, as they were integral in locating training opportunities for many young people with special needs. There is a range of other provision within the Borough such as the Princes' Trust and Fairbridge, who work with young people who are disengaged, but there remains a lack of opportunities for young people who need to build on their basic employability skills.

6.4.1 E2E Programmes

E2E programmes are funded through the Learning and Skills Council (LSC), and students taking part are entitled to the Education Maintenance Allowance, which is paid directly into their bank account. There is a shortage of opportunities in the borough as some providers were shut down by the LSC on the grounds of poor quality.

Members heard that the twenty-two week E2E course offered by Rathbone includes a work placement with an employer, supported by academic work done at the Rathbone site, as well as any necessary basic skills training in literacy and numeracy. Connexions Personal Adviser time is allocated to working with students on E2E programmes.

A high level of success is enjoyed by these E2E students, with 70-100% moving on to full time employment following some of the courses, but the options available are limited to Business and Retail or Childcare. Rathbone would like to develop the range of courses offered in the following areas; food technology, hairdressing, motor vehicles and plumbing. However, they require employers to work in partnership with them, offering the on site/practical experience while Rathbone supports the theoretical/academic side.

6.4.2 Apprenticeships

Apprenticeships, or Work Based Learning, are aimed at young people aged 16-25 interested in a work placement with a local company whilst working towards a National Vocational Qualification and key skills such as ICT proficiency. A suitable rate of pay is agreed with the employer, or a training allowance is granted. All training vacancies in London are entered into a pan-London database called the London Opportunities Information System (LOIS), which is available to all young people across London through Connexions.

In Hackney, as elsewhere, opportunities for Apprenticeships do not meet demand, and consequently places are oversubscribed. The Leitch Review of Skills and Training (5 December 2006) seeks to allow employers greater scope to shape apprenticeship placements through Sector Skills Councils.

Members heard from Stoke Newington School careers advice services that students expressed interest when made aware of Apprenticeship opportunities, but were often disappointed due to lack of availability. Mr Boyce, Manager of Hackney Rathbone, explained that the entry requirements for Apprenticeships were high due to their popularity and limited number of places, often meaning that less academically able students who might particularly benefit from the work based learning approach were unable to access these placements.

The following areas were identified as particularly oversubscribed and in need of more Apprenticeship opportunities: mechanics, plumbing, carpentry, bricklaying, plastering, painting and decorating, and motor vehicle maintenance. Connexions are working with local VCS umbrella organisations to increase the level of basic skills and vocational training opportunities in motor vehicle maintenance, construction, beauty therapy and the sports and leisure industries.

The Commission expressed the view that contracts with the Council above a certain value should be worded to encourage the provision of Apprenticeship placements to young people in the Borough. The Commission notes that this issue is currently being investigated by the Governance and Resources Scrutiny Commission through their Procurement Review.

6.4.3 Better Links with Schools

Mr Boyce, Manager of Rathbone, explained that the majority of referrals of young people wanting to access work based learning programmes were received from Connexions. He expressed the view that many schools offer careers advice and guidance that focuses highly on college. Some young

people get channelled into college when work based learning programmes might be more appropriate for them, which often results in them failing to complete their college course, and spending time in the NEET group before being put in touch with a work based learning provider.

Rathbone offer roll-on/roll-off immediate starts for students at any point during the year, as opposed to having to wait until December or January if they drop out of another course elsewhere. However, they would like to see more direct starts, with schools taking a lead in identifying appropriate students earlier.

6.4.4 Recommendations

Recommendation eight

The Commission recommends that, as the largest employers in Hackney, LBH, the Learning Trust and the City & Hackney PCT take the lead in identifying suitable Apprenticeships placements within their own organisations to help meet the high need for extra Apprenticeship placements within the Borough.

It is accepted that there is a need to further consider the implications and how this should best be achieved. To this end, the Commission requests that a feasibility study setting out the means of moving forward be presented to the Commission by March 2008.

The Commission believes the matter may be most appropriately considered under the auspices of Team Hackney and encourages the Chair of the Children and Young People Partnership Board (CYPPB) to take this matter up as appropriate, whether through the CYPPB or the Economic Development Partnership Board.

Recommendation nine

The Chair of the Children and Young People Scrutiny Commission proposes to consult with the Cabinet Member for Children and Young People in order to explore how best to support Work Based Learning Providers (WBLPs) in their attempts to locate employers willing to provide the practical training for additional E2E courses. The Commission understand that such responsibility currently falls to the Learning and Skills Council.

Recommendation ten

The Commission recommends that the Learning Trust work with schools to ensure the early identification of students suitable for Work Based Learning routes and the development of a referrals system of students expressing an interest to WBLPs.

The Commission believes that this would enable WBLPs to make early contact with these students, increasing the number of direct starts from school, decreasing stress for students around GCSE results time and lessening the chances of these young people being channelled into inappropriate FE courses that they are unlikely to complete. The Connexions Service should also encourage greater awareness of Work Based Learning programmes in schools, and this route should be presented as a positive option to young people, through careers guidance provision.

6.5 Employment and Work Experience

6.5.1 *Working Links and Jobcentre Plus*

Working Links is a private sector led organisation that runs the national New Deal programme in Hackney, including the New Deal for Young People, aimed at 18-24 year olds. There are two Working Links organisations located in Hackney; one in Mare Street and one in Shoreditch serving the Dalston and Hoxton Jobcentres.

Young people who have been accessing the Jobcentre and have remained unemployed for six months are referred to Working Links for mandatory participation in the New Deal programme. Young People make up approximately 16% of all the clients taking part in the New Deal programme through Working Links.

Members heard from a number of sources that there were an extremely limited number of employment opportunities available to young people looking for work through Jobcentre Plus. There is also a shortage of part time jobs for young people, making it hard for young people to access this traditional route into building skills and experience to improve their readiness for full time employment. One problem that has been identified is the gap between the skills and qualifications requested by employers and the reality for many young people. Connexions are currently taking steps to educate employers that many jobs should not automatically be viewed as graduate positions, and in many cases it makes more business sense to employ staff who are not over-qualified and therefore likely to move on quickly.

Discussion with advisers from Working Links revealed that a large number of their young clients were on housing benefit or residing in temporary accommodation, which could create barriers to employment. Advisers noted that a large part of their time was spent liaising with Housing Officers, trying to resolve difficult housing issues for young people, even though this was not supposed to be part of their role.

In addition, advisers explained that young people residing in temporary accommodation could often find themselves in a benefit trap, as if they got a job they would become liable for paying their own rent. Sometimes suitable entry level jobs became available, but the wages were not sufficient to cover the rent being paid for temporary accommodation. As refusing to take the job would result in the cessation of their Job Seekers' Allowance, Working Links advisers find that in such situations it is best not to put a young person forward for a job, even if they are clearly suitable and the job would allow them to gain essential experience.

Lastly, Working Links staff noted that significant number of the young people they worked with had mental health issues, and that drugs and alcohol were also often concerns.

6.5.2 *Work Experience*

Schools are required to provide or assist students in locating a two week work experience placement in Year 11.

During consultation, young people who had been classed in the NEET category for varying periods of time indicated that the work experience they had undertaken at school had not been useful or relevant to them, and a number claimed that they had not taken part in work experience at all. Most of the young people expressed regret that they had not been more fully informed about work experience opportunities, including voluntary work. The idea of work placements within local business was particularly popular and was seen as a way of escaping from the 'experience required to work – work required to gain experience' trap.

In discussions with groups of selected Year 10 and 11 students from Stoke Newington School, Members heard a much more positive account. Students expressed satisfaction with the work experience placements they had undertaken and the support that had been available to them throughout. The Head of Careers Advice at the school explained that young people were encouraged to find their own work placements, with clear support and guidance from staff members, as this helped prepare them for job searches later in life. The students stressed that they appreciated being given this responsibility.

The majority of the Stoke Newington School placements were in media and entertainment, or City business and banks. However, some students selected other options, such as work experience within Homerton Hospital, or nursery provision. Students were given preparatory pre-work experience classes in basic skills, such as suitable work attire, answering telephones and health and safety workplace issues, and were required to keep a learning diary throughout the duration of their placement.

Recent figures indicate that the vast majority of students do undertake work experience placements and that 80% of students and teachers believe it to be positive and beneficial in terms of future career prospects. Members heard that there have been general improvements in work experience placements arranged through the Borough's secondary schools as a result of contracting with the Learning Trust's Education Business Partnership, Inspire. However, it is thought that the quality of placements and levels of support offered to young people still differs among the various schools in the Borough.

Connexions undertakes work with the VCS regarding voluntary opportunities and work experience for young people. In addition, some young people are placed within Connexions Service itself to gain work experience.

6.5.3 *Supporting Young People with Learning Difficulties and Disabilities (LDD) into Employment and Work Experience*

The Commission heard that although there were limited opportunities for employment and work experience for many young people in Hackney, those young people with Learning Difficulties and Disabilities (LDD) found it particular difficult to access suitable placements.

Figures from 2002/03 indicate that 1% of Hackney learners stated they had a learning difficulty and/or disability, as slightly higher percentage than for measurement across all London East boroughs. Young People with LDD in Hackney also had a lower achievement rate compared to all learners in the borough and a significantly lower rate than young people with LDD all London East boroughs.

The Commission heard from Hackney Recruitment Partnership (HRP) regarding the positive qualities that young people with LDD could bring to an organisation. Members also were introduced to the WorkRight programme for Local Authorities, as piloted by the London Borough of Sutton with great success. The WorkRight programme involves the identification and/or creation through job carving of roles within the organisation suitable for those with LDD.

A WorkRight project group has been established and officers are in the early stages of planning how the project might be introduced in Hackney Council.

6.5.4 Opportunities Arising from the 2012 Olympics and Other Significant Regeneration Projects

Over the coming years a large number of major regeneration programmes and projects will take place in Hackney, or will have a significant impact on the Borough. There will be significant opportunities for young people in increased training, work experience and employment linked to the new developments. A list of the major projects illustrates the possibilities: the 2012 Olympic and Paralympic Games, the Thames Gateway project, the East London Line extension, the Woodberry Down refurbishment, Decent Homes commitments, the Stratford City development and CrossRail 2.

Construction is clearly a key area for current and future employment in Hackney. The 2012 Olympics will have an extremely significant impact on the built environment sector, and construction work will provide easily the largest source of increased employment. It is estimated that the Games will generate 60,000 person years³ of employment in construction. A project is also taking place on the Woodberry Down Estate to train construction workers and there is free training in Construction for local people linked to the Stratford City development. Hackney Council has organised a number of events highlighting construction work opportunities in the Borough, most recently on 15th November 2006. As most construction sites require some formal certification, such as the Construction Skills Certification Scheme card, for people to be allowed to work on them, local people must be encouraged to gain entry-level qualifications at the earliest possible stage.

The 2012 Olympics are also expected to provide employment opportunities for local people in a number of other sectors. Members heard that, in particular, there would be entry level opportunities to engage the traditionally hard-to-reach groups with previous low labour market participation rates. Major sectors that will be directly affected by the games include sport, tourism, security, transport and media. 30,000 jobs are predicted in staging the games and 6,700 jobs in showcasing London. Up to 70,000 voluntary positions are also forecast and have been identified as a significant opportunity to provide employability skills to the socially excluded (LSC & LDA, May 2006). The volunteer programme undertaken by the 2002 Commonwealth Games was a particularly successful example, and included a pre-volunteer programme that focused on using the high profile of the Games to engage hard-to-reach groups.

³ A person year of employment is the equivalent of one person being employed for a full year as their primary income.

The Commission heard from the Hackney Chief Officer for the 2012 Olympic Games and Paralympic Games, who explained that twenty-five interlinked projects had been agreed by Cabinet. The Commission noted in particular:

- Project 4 (Making Employment and Training Local): Ensuring there are clear pathways into locally provided training for the relevant employment sectors associated with the Games development – this includes construction, the legacy left by the press and media centres and the legacy of sport within the Olympic Park.
- Project 13 (Volunteering; the big opportunity): Ensuring young people will be taking part in 2012 as Games-time Volunteers – in the build up to 2012 young people will be targeted as part of our drive to increase volunteering among local people, and to ensure that local people are equipped with the skills they will need to qualify as a Games time volunteer. There will be a particular focus on opportunities for disabled children
- Project 21 (Youth Engagement): Ensuring that children/young people who can not be reached through our schools are targeted; working with youth clubs/organisations; those organisations working with NEET young people; and identifying routes to access the significant number of secondary school-age young people that attend school outside the borough.

The Commission also noted that most work aimed at young people in the Borough focused on schools, and that the high proportion of Hackney's secondary school children educated outside the borough were not being accessed.

As the review was drawing to a close, Members were also alerted that funding had been provided for 400 construction training places at Hackney Community College, which was felt to be a clear and positive example of constructive partnership working. Members were also pleased to hear about employment brokering for media and construction work that was being established for the Olympics.

6.5.5 Recommendations

Recommendation eleven

The Commission recommends that:

- a) Hackney Homes identify named Housing Officers/points of contact for Working Links staff to access in their local area through the

neighbourhood offices, and make this information available to both Working Links offices in the Borough.

- b) The East London and the City Mental Health NHS Trust, Sub 19 and the Drugs and Alcohol Team, City and Hackney Alcohol Service and the City and Hackney Primary Care Trust provide Working Links with the relevant documentation, guidance and contact details to meet their needs for collaborative working.

Recommendation twelve

The Commission recommends that the Learning Trust set out proposals to the Commission by October 2007 for standardising the work experience provision for Year 10 students across the Borough.

Members were impressed with the approach taken by Stoke Newington School to supporting students into relevant and beneficial work experience placements, and suggest that the Trust draw on this example, as well as other examples of best practice in the Borough.

Recommendation thirteen

The Commission wishes to receive a report by December 2007 detailing how the Authority proposes to work in partnership with the Borough's largest employers (including the PCT, TLT, the Community College Hackney and B6 Sixth Form College) to fully embed the work that the Commission understands is already ongoing within LBH to provide increased work experience opportunities to young people in the Borough.

The Learning Trust is requested to commit to working in partnership with the Council HR function in order to support the above recommendation.

Recommendation fourteen

The Commission fully supports the introduction of the WorkRight scheme within the Council, and urges officers to work with appropriate partners, including Hackney Recruitment Partnership, to develop the necessary policies and procedures for this scheme to become fully operational.

In the longer term the Commission hopes to see the WorkRight scheme adopted by all the Borough's largest employers (including the PCT, TLT, the Community College Hackney and B6 Sixth Form College).

Recommendation fifteen

The Commission recommends that, in addition to the excellent Olympic preparatory work being undertaken with young people in Hackney schools, the 2012 Team develop a strategy to engage the high proportion of Hackney's secondary school children educated outside the borough through increased joint working with the Youth Service, Connexions, and all other relevant statutory bodies including other host boroughs for the Games that provide education services to Hackney young people.

In addition, the Commission requests that Community Services and the 2012 Team work with schools and partners in the voluntary and community sector (VCS) to ensure that the full potential to engage young people through voluntarism at the 2012 Olympics is realised.

The Commission is mindful that it is imperative that all local stakeholder agencies are at the forefront of providing flexible and responsive training in response to the skills needs arising from regeneration opportunities such as the 2012 Olympics, and other major development impacting on the Borough. Construction, in particular, should be recognised as a key area for development.

6.6 Supporting Voluntary and Community Sector Work with NEETs

6.6.1 The Voluntary and Community Sector (VCS) has a large role to play in addressing NEETs issues as they have experience of accessing 'hard to reach' communities where statutory provision cannot make contact. This has been recognised in Youth Matters: Next Steps and stress has been placed on the importance of better communication and working together with the VCS to prevent duplication of services. Stronger links will also be forged with VCS through the new Youth Support Teams to facilitate the Youth Offer and address youth issues.

6.6.2 Mapping

Consultation with a number of representatives from various projects in the voluntary and community sector (VCS) aimed at engaging and assisting NEET young people in Hackney revealed concerns regarding the lack of useful information available to assist in assessing need and project planning. Project workers described frustration at not having access to a full list of current work being done with NEET young people in the Borough, making it extremely difficult to identify gaps in provision or to avoid duplication.

The Commission heard that there is no overarching point of contact within the Council that can provide an overview of the VCS and the support

available to young people. Responsibility is fragmented through different Directorates, for example, many projects relating to youth work are funded through the Hackney Grants Programme operating under the Community Services Directorate, whereas other youth project funding is coordinated through the Children's Services Directorate.

Even if all the information stored in different Directorates were collated to produce an overview of the VCS provision to young people in Hackney, this still would not include the large number of VCS projects that receive no Council funding. Especially in groups such as the Turkish and Kurdish Community, valuable work is being done informally in the VCS. This work plays an important role, particularly in engaging and supporting young people that the public sector may fail to reach, and yet there is no comprehensive overview of what is available.

6.6.3 *Facilitating Information to the VCS*

Consultation with project workers also revealed a lack of available information regarding the profile of NEET young people in Hackney. Figures on numbers and geographical clusters of NEETs within the Borough, amongst other data such as gender, ethnicity and so on, would also be extremely useful in project planning. Although this information is not fully comprehensive and contains a sizeable 'Unknown' section, the relevant information is collected by Connexions. However, it is not currently readily accessible to those coordinating VCS project for NEET young people.

In addition, Members heard that there was no formal mechanism for sharing best practice and lessons learnt with other VCS providers of services to young people, and that therefore it was hard to access and fully utilise the wealth of experience, skills and knowledge of local communities contained within the VCS.

6.6.4 *Private Sector Fundraising*

In depth consultation work with VCS stakeholders has already been undertaken by the Regeneration and Social Inclusion Scrutiny Commission in exploring options for the administration of its voluntary and community sector grant programme (Options Review 2005-06). However project workers had a number of comments on private sector fundraising and ways in which the Council could potentially assist.

The VCS stakeholders consulted agreed that a significant amount of the time was taken up with fundraising, and yet despite this most projects were starved of resources. Members heard that engaging funders for work with the NEET group was challenging, as many potential funders were not

sympathetic to the fact that there are no “quick fixes” and that the complex and challenging work necessary to successfully engage and help hard to reach young people takes place over the long-term. Too many funders wanted to see a definitive end-goal to a project, such as a young person enrolling on a college course or finding a job. Furthermore, it was extremely difficult to obtain funding to support the infrastructure of the VCS organisation, although this was necessary for the specific projects undertaken to continue to operate.

In addition, Members heard that it was important for projects to be viewed as having the support of the Council when trying to obtain private sector funding, as many businesses will consider match funding Council contributions, as assistance from the Council is often seen as an indication that the project is valid and robust.

Consultees explained that if a project does not qualify for direct financial assistance from Council funds then other types of help are also welcome, such as donating officer time, allowing free or reduced price access to Council-owned property for office or activity space, donating old equipment such as computers, and free promotion of the project through the Council website or Hackney Today. Not only is this support invaluable to the project, but it can often be used as proof of Council support to access further private sector funding.

6.6.5 *Some Gaps Identified in Provision*

Members heard that excellent support schemes and projects were being provided through the Positive Activities for Young People (PAYP) programme. However, the perception was that some of these projects could only be accessed by those young people educated within the Borough. This was felt to unfairly discriminate against the large number of Hackney-resident young people travelling out-of-Borough to access education provision.

A number of VCS project workers commented that while there were many activity (sport/fun) groups aimed at engaging the hard-to-reach group of NEET young people, there was a significant lack of programmes to support these initial efforts by providing actual education and training opportunities. In addition, there was a lack of provision for those young people who were excluded from mainstream education, and the support that was available tended to stop abruptly at age 16. It was felt that this was often the point at which this specific group of young people became very alienated and joined the NEET group.

6.6.6 Recommendations

Recommendation sixteen

The Commission recommends that:

- a) By April 2008 the Youth Service gather information from different Directorates regarding all youth projects the Council helps to support and undertakes a mapping exercise to reveal gaps/duplication in provision.
- b) By April 2008 the Children and Young People Services map informal provision in the VCS, working in consultation with the Voluntary Sector Liaison Group, Hackney's leading umbrella bodies for the Sector (HCVA and HVA) and drawing on Members' local knowledge of VCS provision to young people in their wards.
- c) This information, once collated, be made available to all relevant project workers, referral agencies, parents/carers and young people, and reported back to Commission Members.
- d) The Children and Young People Services obtain a detailed breakdown of the NEET profile in Hackney on a quarterly basis from monitoring information collected by the Connexions Service and make it easily accessible to all VCS projects undertaking work with this group to enable them to better target their work and resources.

Recommendation seventeen

The Commission requests an update on plans to extend the PAYP programme summer scheme provision to all school holidays, with some projects operating on a year round basis.

The Commission would also welcome a report detailing the mechanisms by which the PAYP programme confirms that all Hackney-resident young people receive the same provision, regardless of the Borough in which they access their education provider.

6.7 Access to Information, Advice and Guidance for Parents and Carers of NEET/Potential NEET Young People

6.7.1 Why Support Parents and Carers?

The large-scale consultation for the Youth Matters Green Paper revealed that young people overwhelmingly picked their parents as their first choice for guidance and support. Also highlighted was the fact that parents and

carers often felt like they didn't have the right information, or access to the right information, to meet this need adequately.

Research undertaken by the DfES in 2005 found that young people were less likely to be NEET at the age of 16 years if their parents were involved in their decision about what to do after Year 11. Parental support, as well as providing protection from entry into the NEET group at 16, was also associated with earlier movement out of the NEET group. In addition, parents of young people who were NEET at 16 years were less likely to feel that they knew enough about modern qualifications to give their children good advice about what to do after Year 11. (Rennisen et al)

Furthermore, the Childcare Bill (2005) introduces a duty on Local Authorities to make local info about services and facilities provided by both the statutory and voluntary sector services available to parents and carers up until their child's twentieth birthday. Hackney's Children and Young People Plan (2006-2009) also makes the following relevant recommendations:

- To improve targeting and effectiveness in providing parental support to improve behaviour and attainment
- To map and evaluate the range of services provided within Hackney that aim to help parents in improving their children's health, safety and learning
- To working with parents, carers and families more effectively in order to clarify a shared expectation of parenting in Hackney (for both the community and those delivering services)

6.7.2 Current Provision for Parents/Carers of NEET/Potential NEET Young People in Hackney

Connexions provides information and advice to parents and carers at school parent evenings, although clearly this avenue is no longer available once a young person enters the NEET group. Another source of guidance available to parents is the Hackney Council Parenting Strategy course, which was first piloted in Hackney in February 2006. This scheme involves twelve weeks of classes and is open to anyone with children, although the target group seem to be predominantly parents with young children who want to learn discipline and management techniques. In addition, parents or carers whose children have special educational needs can access further support through the Hackney Parent Partnership Service.

Parents and carers of young people aged fourteen and over can access Connexions on behalf of their child. The new Connexions access point at the One Stop Shop in Shoreditch has reported that a significant number of

clients were in fact adults, often accessing the service on behalf of young people in their care.

Shoreditch One Stop Shop: Young People and Adult Callers
October 2006

Young People	First time caller	Adults	First time caller
94	31	31	17

This suggests that parents and carers in Hackney would welcome the opportunity to access further information, advice and guidance on behalf of their children.

6.7.3 What is Being Done Elsewhere?

Rathbone, a national charity supporting disadvantaged young people and adults into learning opportunities, are in the process of piloting an information, advice and guidance event for parents and carers in five locations across the country, known as the Parenting Information Point. The events are open to any parent or carers with a child aged four to nineteen. Representatives from relevant agencies and projects, from the statutory and voluntary sector services, gather together to answer questions and provide information to parents and carers. The format of the event is based around a board game in an attempt to be engaging and accessible for vulnerable families, minimising any perceived stigma attached to asking for extra support.

Responses from parents and carers to the pilot so far has been positive, as has the feedback from agencies involved. Rathbone are considering extending the pilot to all local Rathbone centres in 2007-08. Milton Keynes Council have already recognised the value of providing this service to parents and carers and coordinate a similar event on a yearly basis.

Research from Camden Council into 16-25 year olds at risk of exclusion from education and employment, especially those categorised as NEET, indicated that possible a possible obstacle was low literacy levels amongst parents and carers, which could result in a lower level of engagement and communication with the school. In addition, this also resulted in a lower level of support for academic work in the home environment. Camden recommended developing more effective channels of communication, particularly focusing on oral communications, between schools and parents/carers who have poor literacy skills. ('On the Margins?', 2004)

6.7.4 Recommendations

Recommendation eighteen

The Commission requests that the future contract for 2008 setting out the provision of services currently provided by the Careers Company include the following considerations:

- a) The development of a minimum standard for the information, advice and guidance that is available to parents and carers.
- b) Details of how parents and carers will be kept up to date on the careers advice and guidance being made available to young people.
- c) Details of how the selected careers service provider, the Council and any other relevant partners will work together to develop Parenting Information Point events in Hackney.
- d) Details of how Hackney schools will be encouraged to ensure they are communicating with parents and carers in the most effective way possible, and that they seek to develop more helpful communication techniques to parents and carers where appropriate.

7 CONCLUSION

- 7.1 This has been the third investigation conducted by the Children and Young People Scrutiny Commission. The review has aimed to identify and understand the provision available for NEET young people in the Borough, and the support and guidance in place to prevent Hackney young people from joining the NEET group. The Commission's perception of the challenges currently being faced has been increased and the recommendations have been made bearing these in mind.
- 7.2 As the review progressed, it became evident that NEETs is a highly complex area, and there are no simple answers to a number of the issues that were raised. One area of concern that remains is the standardisation of Careers Service provision across all schools in Hackney. However, the Commission accepts the limitations on the Learning Trust to instruct schools to act in certain areas, and recognises that schools will be able to opt out of any requirement for standardisation from March 2008.
- 7.3 Another general point that has arisen from the review is that in dealing with disadvantaged groups of young people and diverse communities Members believe there is much to be gained from officers drawing on Member expertise and local knowledge of their ward area, and accepting

their assistance in helping to identify particular areas of need where resources could best be utilised and support targeted.

- 7.4 Given the large topic area encompassed by NEETs, it was not possible for the Commission to thoroughly investigate all issues pertinent to the review. At the final Commission meeting dedicated to the review, Members listed a number of topics they felt would have benefited from further investigation. Firstly, it was noted that an approach adopted by boroughs such as Newham, Redbridge and Tower Hamlets was the provision of Foyers. This initiative, not undertaken in Hackney at the time of writing, was aimed at disadvantaged young people with housing difficulties who would benefit from being appropriately guided towards education, employment or training developments opportunities. Members felt that the suitability of this adopting this approach within Hackney might benefit from further consideration in the future.
- 7.5 The issue of the sometimes abrupt termination of support for young people at the age of sixteen was also highlighted as an issue that could perhaps be examined in more detail by the Commission at a future point. In addition, it was felt that it might be useful to review the possibility of setting up a jobs fair for employment opportunities within LBH, as originally proposed by the Training Opportunities for Young People Review undertaken by the Regeneration and Social Inclusion Commission in 2004/05. Lastly, the levels of support offered by Hackney's further education colleges to young people with SEN/LDD, as compared to colleges such as City & Islington, was noted as an issue that might benefit from further investigation at a later date.
- 7.6 The Commission recognises that many of the report's recommendations require partnership working between the Local Authority and other relevant organisations and intends to hold ongoing dialogue with those on whom the recommendations have an impact.

8 MEMBERSHIP OF THE SCRUTINY COMMISSION

8.1 Elected Members:

- Councillor Akhoon
- Councillor Bell
- Councillor Demirci
- Councillor Icoz
- Councillor Kennedy
- Councillor F Khan
- Councillor C McShane
- Councillor Odze
- Councillor Shaikh
- Councillor Siddiqui (Chair)
- Councillor Taylor
- Councillor Unluer (Vice Chair)

8.2 Co-optees:

- Eli Anderson
- Ralph Bergmann
- Andrew Bridgwater
- Vera Edwards
- Mary Ludlow
- Lucy Quatre
- Mohammed Zeena

9 BACKGROUND PAPERS

9.1 The following documents have been relied on in the preparation of this report or were presented to the Scrutiny Commission as part of the investigation:

- 'On the margins? A qualitative study of white Camden households at risk of exclusion from education and employment' London Borough of Camden (2004)
- 'Employment and Skills for the 2012 Olympic Games: research and evidence'. Learning and Skills Council & London Development Agency (2006).
- 'Young People Not in Education, Employment or Training: Evidence from the Education Maintenance Allowance Pilots Database'. Rennison et al, Centre for Research in Social Policy, commissioned by the DfES (2005)

- Youth Matters Green Paper. DfES (2005)
- Youth Matters: Next Steps. DfES (2006)
- Minutes of the Children and Young People Scrutiny Commission, 21/09/06
- Minutes of the Children and Young People Scrutiny Commission, 06/11/06
- Minutes of the Children and Young People Scrutiny Commission, 04/12/06

Lead Councillor: Cllr Chris Kennedy
Report Originating Officer: Clair Bantin, Overview and Scrutiny Officer.

Children and Young People Scrutiny Commission

Scrutiny Review Proposal – Young People Not in Education, Employment or Training (NEET)

1. **Brief description of the proposed review/Proposed Terms of Reference**

It is proposed to investigate the number of young people in Hackney currently not in education, employment or training, and the level and range of services offered in Hackney to meet their needs. The review will identify whether there is more that the Council can do to support young people in this situation in the Borough.

Terms of reference

- To review current national and LBH policy and guidance regarding NEET young people, and how this relates in practice to young people in Hackney.
- To review the demographic profile of NEET young people in Hackney, drawing particularly on data from the Connexions Service and the Learning Trust.
- To review the findings of the Joint Area Review (JAR) in relation to NEET young people, focusing on areas of concern and building on work already done.
- To review the current level and range of services offered to NEET young people in Hackney.
- To identify good practice and lessons learnt from other comparable boroughs.
- To consider the reasons why young people fall into the NEET category, and to investigate preventative measures to reduce the incidence of this.
- To investigate potential funding streams for reducing the number of NEET young people currently in Hackney.

- To make recommendations for future policy.

2. Origin of request

The review topic was selected following a meeting between the Chair, Cllr Saleem Siddiqui, and the Cabinet Member for Children's Services, Cllr Rita Krishna, and a further discussion between Members at the 8 June Children and Young People Scrutiny Commission meeting. Further details were finalised in consultation with advisers from the Learning Trust.

Members wish to pursue this investigation in the light of the recent Joint Area Review. This area has also been selected to link into the Careers Company contract tendering process, which Members hope to enhance by their work in this area.

In addition, one of the Local Area Agreement (LAA) priority outcomes has been identified as 'Reducing worklessness for 18-24 year olds'. The review will promote understanding of the issues surrounding worklessness for this age group and will help to put in place recommendations to achieve this goal.

3. What is the scope of the review?

It is anticipated that the review will involve:

- A statistical survey of NEET young people and current service provision in Hackney.
- A presentation of the JAR findings.
- Comparisons with other boroughs.
- Written submissions.
- Evidence gathering in public
- Site visits where appropriate.

Amongst other issues, the review is likely to look closely at:

- The Careers Company contract tendering process.
- The Connexions Service and their NEET reduction strategy
- The 14-19 strategy.
- The 14-19 curriculum offer, with particular focus on the lack of work placements.
- An assessment of the adequacy of the post-16 special educational needs provision in schools and colleges, and the impact this may have on some young people's decisions to leave full-time education.

- The possibilities for NEET young people that may arise from opportunities provided by the Olympics and other major regeneration developments in Hackney.

4. What is the likely scale of any recommendations, and who are likely to be affected by them?

Recommendations for action are likely to affect:

- Current or potential NEET Young people in the borough.
- The Connexions Service.
- The Learning Trust.
- Other organisations who maybe involved in the provision of services to NEET young people.

5. Who is likely to have to implement any recommendations?

Recommendations would be implemented by:

- The Learning Trust.
- The Connexions Service.
- Other organisations who maybe involved in the provision of services to NEET young people.

6. What are likely sources of evidence/stakeholders?

- The ConneXions Service.
- The Learning Trust.
- Other best practice authorities.
- NEET young people.
- The Learning and Skills Council.
- Other organisations who maybe involved in the provision of services to NEET young people.

7. What level of support is likely to be required by the review?

Input will be required from:

- LBH Officers.
- The Learning Trust.
- The Connexions Service.

- Other organisations providing or likely to provide services to NEET young people.
- Other best practice authorities.

8. What are the timescales for the review?

The review will begin in July 2006 and presentations and/or consultations will take place at the scheduled October, November, December and January 2007 Commission meetings. Site visits and ad hoc meetings with Officers will be conducted as necessary.

The final report will be concluded in January and will be presented to Cabinet and Council.

9. Who will be the Lead Member?

Cllrs Kennedy, McShane, Demirci and Unluer will form the main working group for the review, and will be supported by all other Members of the Commission.

10. How will progress be monitored?

The final report will detail how the recommendations will be monitored, which may include reports back to the Children and Young People Scrutiny Commission from the parties asked to implement the recommendations.

CONTRIBUTORS

The following people gave evidence at for Children and Young People Commission meetings:

21 September 2006

Debbie Banks - Hackney Connexions
Strategic Manager

Bev Bannister - Assistant Regional Manager,
Careers Management Capital

Alistair Kidd – Director of Strategic Planning
and Quality Assurance, London East
Connexions

Nicola Baboneau - TLT and Chair of the
Hackney Connexions Local Management
Group

Gifty Green - Connexions Operations
Manager, London East Connexions
Partnership

Carl Blakey - Head of Commissioning for
Children, Young People & Families at the
London Borough of Hackney.

6 November 2006

Daphne Ramsey - Community Services

Carl Blakey - Head of Commissioning for
Children, Young People & Families at the
London Borough of Hackney.

Amanda Graham – Youth Service

Isabelle Trowler – Children and Young
People’s Services

Gabin Sinclair - Founder and Director of
Rising Tide

4 December 2006

Arvind Sandhu - Equality and Diversity Policy Officer

Simon Thorne - Manager (job share) of Hackney Recruitment Partnership

Joanna Davies - Head of Learning Difficulties Service

ORGANISATIONS VISITED

The following people assisted the Review Working Group with their inquiries during site visit to various organizations working with NEET young people:

- Leroy Coley - Year 10 Curriculum Co-ordinator, Stoke Newington School
- Maria Amaro - Head of Careers Advice, Stoke Newington School
- Four Year Ten students - Stoke Newington School
- Four Year Eleven students - Stoke Newington School
- Charles Kingawajjo - Business Development Consultant (Public Sector), Youth for Hackney
- Andrew Edoje - Business Development Consultant (Private Sector), Youth for Hackney
- Alton Bell - Bootstrap
- Nick Friday - Eastside Youth Academy
- Sherland Boyce - Manager, Hackney Rathbone
- Mathew Hypolite - Owner and Manager, Look to the Future
- Lillie Stoute – Dramatherapist, Look to the Future
- Caroline Modest - Manager, Working Links

- Shoreditch One Stop Shop
- Careers Enterprise Limited, The Grove
- Dalston Connexions

ORGANISATIONS THAT PROVIDED WRITTEN OR VERBAL EVIDENCE

The following organizations provided evidence to assist the review via telephone, letter or email:

- Judy Stent, Advisor, Jobcentre Plus (Mare Street branch)
- Adrian Kelly, Teenage Pregnancy Coordinator, City and Hackney PCT
- Teresa Kingwell, Rathbone (Milton Keynes centre)
- Rathbone (Wigan centre)
- Carmen Kane, Parenting Support Co-ordinator, Milton Keynes Council
- Debbie Cowley, Director of Practice Development, Parenting UK
- Angela Kirk, Assistant to the Director, Balik Arts
- Paul Hill, Programme Manager, Dalston Youth Project
- Leona Watson, Scrutiny Lead Officer, Education, London Borough of Lambeth
- Rob Flynn, Newham Council

The Commission is grateful to all those who took part. Errors and omissions are the responsibility of the Commission.



Management Information Report
November 2006

Prepared by London East Connexions Partnership
Information Services

East London Management Information Report

Contents:

Note:
A single click of the mouse on headings, table and chart numbers will take you straight to that page.
Otherwise click on the arrows at the bottom of the page.

[1. Key figures and analysis](#)

[2. Cohort Summary](#)

- a. Total cohort, adjusted no. EET's, NEETs and Unknowns [Tab 1](#)
- b. Adjusted NEET % [Tab 2](#)

[3. NEET Analysis](#)

- a. Adjusted NEET % over time [Tab 3](#) [Chart 1](#)
- b. NEET %: 2003/04 - 2006/07 [Tab 4](#) [Chart 2](#)
- c. NEET: Time spent [Tab 5](#) [Chart 3](#)
- d. NEET Joiners & Leavers [Tab 6](#) [Chart 4](#)
- e. NEET Joiners & Leavers by month [Tab 7](#)
- d. NEET Leavers [Tab 8](#) [Chart 5](#)

[4. Unknowns Analysis](#)

- a. Current unknown % [Tab 9](#) [Chart 6](#)
- b. Unknown % over time [Tab 10](#) [Chart 7](#)

[5. In learning](#)

- a. % in learning [Tab 11](#)

[6. Vulnerable Groups](#)

- a. Teenage mothers [Tab 12](#) [Chart 8](#)
- b. LDD [Tab 13](#)
- c. Care Leavers [Tab 14](#) [Chart 9](#)
- d. Activities of target group [Tab 15](#)
- e. Ethnicity Monitoring [Tab 16](#) [Chart 10](#) [Chart 11](#) [Chart 12](#)
- f. Ethnicity by Destination [Tab 17](#)

[7. Interventions](#)

- a. Interventions: East London over time [Tab 18](#)
- b. Interventions by Borough [Tab 19](#)
- c. Interventions: East London [Tab 20](#)

[8. Definitions & explanatory notes](#)

Key figures: East London - November 2006

The objective of this report is to provide a summary of East London's position in providing support to young people aged 16-18 years.

NEET's

The adjusted NEET percentage was 8.0%. This is lower than both November 2005 (9.2%) and November 2004 (9.6%). East London's NEET target for November 2006 was 8.5%. The Connexions NEET target has therefore been successfully met. See Tab 2 for a breakdown of the adjusted NEET by borough.

Around 1,519 young people aged 16-18 years joined the NEET group this month and 1,501 left it (Tab 6). Of those who left the group 80.8% left to positive outcomes i.e. EET destinations (Tab 8). Around 6.5% of NEET leavers left the NEET group because their currency had lapsed i.e. they were not followed up within a certain timeframe. Of those who joined the NEET group 35.3% joined from education and 33.8% had their currency reestablished i.e. their currency had lapsed but subsequent followup confirmed they were still NEET. See Tab 7 for a breakdown of NEET Joiners and Leavers by borough.

Nearly half (48.8%) of the NEET group aged 16-18 years have been NEET between 4 and 20 weeks. Just over a quarter have been NEET for less than 4 weeks (27.3%) and nearly a quarter (23.9%) for more than 20 weeks. See Tab 5 for a breakdown of the time spent NEET by borough.

Unknowns

The unknown figure was 6.4%. This was lower than November 2005 (7.8%). East London's unknowns target for November 2006 was 8.0%. The Connexions unknowns target has therefore been successfully met. See Tab 9 for a breakdown of the unknown figures by borough.

In learning

Most young people aged 16-18 years are in some form of learning. In November 77.3% were in full or part time education, training or employment funded through Government Supported Training, or employment with training to NVQ level 2 or above. This has increased from 75.7% at the same time last year. See Tab 11 for a breakdown by borough.

Vulnerable Groups

There are 894 teenage mothers aged 16-19 recorded on CorePlus - 41.1% of the Department of Health estimate. Around 30.5% of teenage mums are in EET.

There are 11,152 young people aged 16-19 with LDD recorded on CorePlus. Around 75.5% are EET compared to 84.5% of young people aged 16-19 in London East as a whole. See Tab13 for a breakdown of this group by borough.

There are 111 care leavers aged 19 recorded on Core. Of these 45.8% are in EET. See Tab14 for a breakdown of this group by borough.

Around 9.9% of young people have 'no ethnicity information' recorded against them. Our goal is to keep this below 11%. See Tab16 for a breakdown of this group by borough.

Interventions

There were 5,381 interventions with young people in compulsory education compared to 5,080 at the same time last year - an increase of 5.9%. There were 15,616 interventions with young people in post compulsory education compared to 12,370 at the same time last year - an increase of 26.2%. See Tab19 for a breakdown of interventions by borough

Cohort Summary: November 2006

Tab 1: Young people 16-18 years who have completed compulsory education

	Post School Cohort	16-18 Cohort	16-18 Actual EET	16-18 Actual NEET	16-18 Situation Unknown	Adjusted EET target No.	Adjusted CX NEET target No.
	No.	No.	No.	No.	No.	No.	No.
Barking and Dagenham	9,335	6,608	5,376	640	543	5,650	680
Bexley	10,100	7,113	6,547	430	109	6,619	437
City	662	549	516	2	31	520	3
Greenwich	10,165	7,120	5,946	713	367	6,182	740
Hackney	9,011	5,281	4,123	565	553	4,281	612
Havering	14,358	10,016	9,014	554	433	9,162	567
Lewisham	11,269	7,897	6,873	456	524	7,223	504
Newham	12,947	9,080	7,366	753	895	7,632	813
Redbridge	12,469	9,237	8,460	379	362	8,589	391
Tower Hamlets	9,337	6,491	5,198	573	636	5,383	585
East London	99,653	69,392	59,419	5,065	4,453	61,241	5,332

Note:
This is the post school cohort. To be counted here a young person must:-
- be 16 to 19 years (or up to 24 with LDD)
- have left compulsory education
- attend post school education in the area OR be 'NEET', 'Unknown', in 'higher' education or 'other' and living in the area.

The total post school cohort is the sum of those whose current situation is EET (in employment education and training), NEET (not in education, employment or training), PDO (in personal development opportunities), Unknown or Other (i.e. refugee/asylum seeker/custodial sentence).

Note:
This is a subset of the total post school cohort and the cohort from which the unknown % is calculated.

Note:
The 'adjusted' NEET has adjustments made for those young people not followed up within a specified time frame. Adjustments are based on research by DfES to improve the accuracy of the NEET%. The adjusted NEET% is calculated by dividing the adjusted NEET by the sum of the adjusted NEET & EET i.e. adjusted NEET / (adjusted NEET + adjusted EET). See explanatory notes for more information.

Tab 2: Adjusted NEET % - Young people 16-18 years who have completed compulsory education

	Nov 06 Indicative Target	Adjusted NEET Nov 04	Adjusted NEET Nov 05	Adjusted NEET(CX) Nov 06	Adjusted NEET (LA) Nov 06	Change since Nov 04	Change over last year	Risk indicator
	%	%	%	%	%	%	%	
Barking and Dagenham	11.6%	13.1%	11.9%	10.7%	11.1%	-18.0%	-9.7%	G
Bexley	6.6%	7.5%	6.6%	6.2%	6.6%	-17.4%	-6.2%	G
City	4.7%	na	0.7%	0.6%	0.6%	na	na	
Greenwich	11.3%	12.7%	10.5%	10.7%	11.8%	-15.8%	1.8%	A
Hackney	14.1%	15.9%	16.8%	12.5%	12.7%	-21.3%	-25.5%	G
Havering	6.0%	6.8%	7.0%	5.8%	5.9%	-14.3%	-16.7%	G
Lewisham	8.3%	9.4%	8.6%	6.5%	6.9%	-30.6%	-24.2%	G
Newham	8.8%	9.9%	9.5%	9.6%	10.2%	-2.8%	1.3%	A
Redbridge	4.8%	5.4%	6.1%	4.4%	4.6%	-19.4%	-28.6%	G
Tower Hamlets	9.2%	10.3%	12.3%	9.8%	10.8%	-4.8%	-20.3%	G
East London	8.5%	9.6%	9.2%	8.0%	8.5%	-16.6%	-12.9%	G
London								
England								

Note:
Adjusted NEET for both Connexions and LA targets is provided. Young people in 'personal development opportunities' are counted as EET for Connexions, but NEET for the LA. Hence the LA NEET % is higher than the Connexions NEET%.

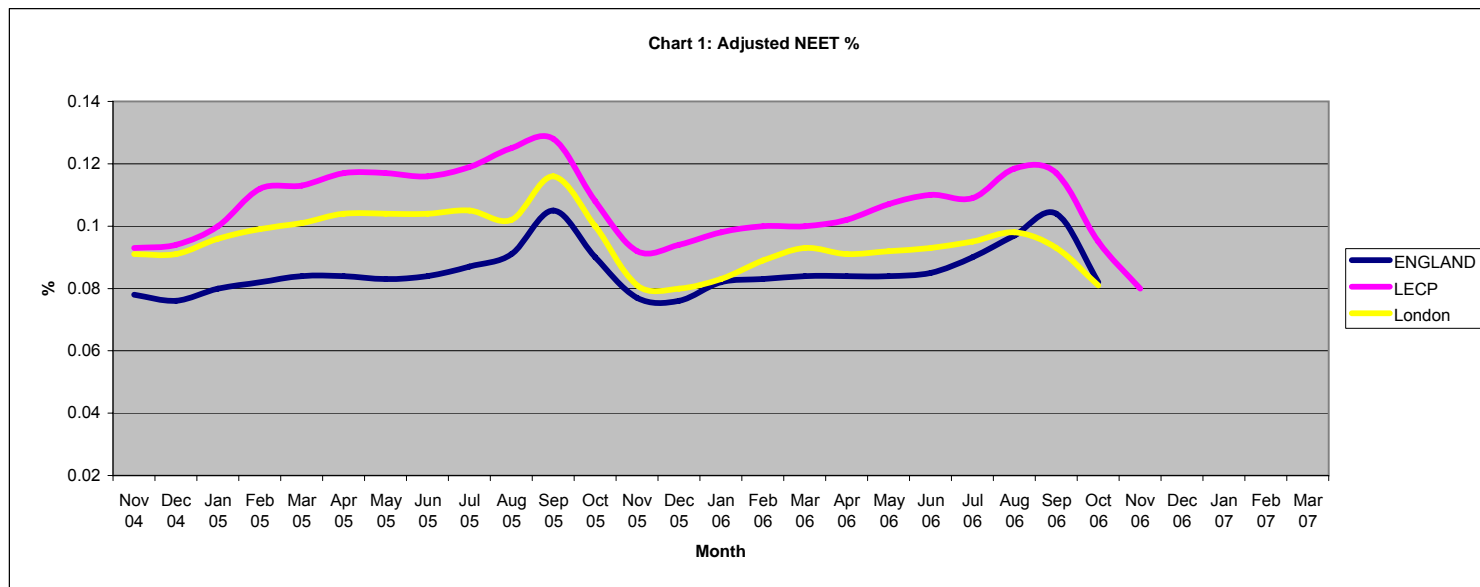
Note:
This tells you whether you have reduced your NEET % over time. As the % NEET has a cyclical pattern, comparisons should be made with the same period last year.

○ GREEN CX adjusted NEET % is lower than the previous year and lower than November 2004.
○ AMBER CX adjusted % NEET is one of the above only.
○ RED CX adjusted NEET % is higher than last year and higher than November 2004.

NEET Analysis

Tab 3: Adjusted NEET %: Young People 16-18 years who have completed compulsory education

Adjusted NEET(%)	Nov 06 NEET Target	Apr-06	May-06	June 06	July 06	Aug 06	Sept 06	Oct 06	Nov 06	Dec 06	Jan 07	Feb 07	Mar 07
Barking & Dagenham	11.6%	12.2%	12.7%	12.9%	12.1%	13.8%	13.5%	11.9%	10.7%				
Bexley	6.6%	8.2%	8.7%	9.0%	7.9%	7.4%	7.5%	7.6%	6.2%				
City	4.7%	1.0%	1.1%	0.6%	0.4%	0.9%	1.8%	1.1%	0.6%				
Greenwich	11.3%	13.3%	14.3%	14.8%	12.5%	14.5%	12.8%	12.5%	10.7%				
Hackney	14.1%	14.7%	15.7%	16.8%	17.0%	18.0%	17.7%	14.4%	12.5%				
Havering	6.0%	6.9%	6.8%	6.7%	7.0%	7.4%	9.1%	6.6%	5.8%				
Lewisham	8.3%	8.6%	9.2%	9.5%	9.9%	8.4%	7.3%	7.0%	6.5%				
Newham	8.8%	11.9%	12.5%	12.3%	13.7%	17.0%	15.7%	12.5%	9.6%				
Redbridge	4.8%	6.9%	7.0%	7.7%	7.8%	8.2%	9.0%	6.1%	4.4%				
Tower Hamlets	9.2%	14.5%	15.0%	16.0%	16.6%	19.6%	18.6%	12.8%	9.8%				
East London	8.5%	10.2%	10.7%	11.0%	10.9%	11.8%	11.7%	9.5%	8.0%				
London	8.1%	9.1%	9.2%	9.3%	9.5%	9.8%	9.3%	8.1%	na				
England	6.9%	8.4%	8.4%	8.5%	9.0%	9.7%	10.4%	8.2%	na				

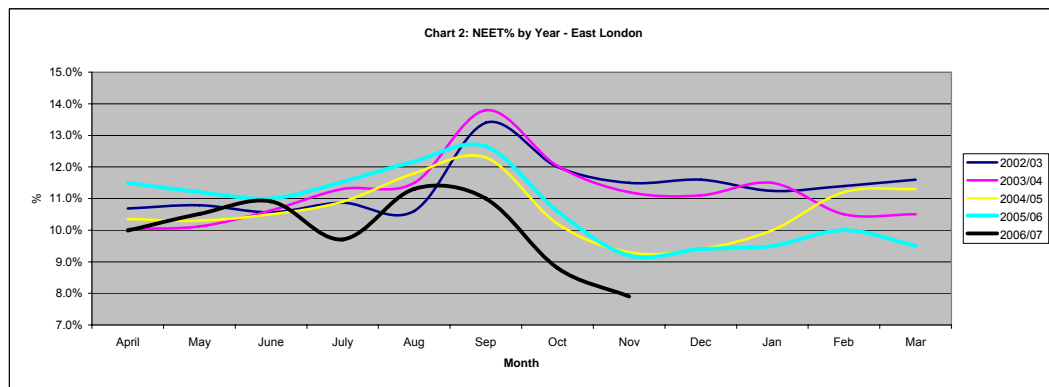


Note:
The % of young people who are NEET (unadjusted) is calculated by dividing the number NEET by the total number known to be NEET or EET i.e. NEET/(EET+NEET).

Tab 4: NEET Young People 16-18 years who have completed compulsory education

No. of NEET's	Jul-05	Aug	Sep	Oct	Nov	Dec	Jan-06	Feb	Mar	April	May	June	July	Aug	Sep	Oct	Nov	Dec	Jan-07	Feb	Mar	
Barking & Dagenham	624	656	681	564	624	632	619	579	536	622	636	628	448	567	670	622	640					
Bexley	381	361	426	457	493	467	473	508	496	523	531	533	420	387	463	454	430					
City	na	na	na	na	3	3	3	3	3	4	4	3	1	3	4	3	2					
Greenwich	723	735	803	824	721	760	772	770	698	734	769	773	468	635	699	732	713					
Hackney	553	547	621	660	621	608	590	598	530	552	581	607	507	542	565	551	565					
Havering	619	627	807	777	617	584	623	659	551	547	524	504	468	499	622	554	554					
Lewisham	469	485	512	603	624	615	535	543	542	583	602	605	550	457	489	436	456					
Newham	860	886	993	920	779	757	719	763	742	690	705	683	658	849	855	752	753					
Redbridge	477	495	582	556	517	515	539	505	495	465	465	504	438	470	513	438	379					
Tower Hamlets	na	na	na	na	739	741	750	714	660	639	657	678	608	765	855	653	573					
East London	5,415	5,522	6,317	6,146	5,738	4,941	5,623	4,928	4,593	5,364	5,468	5,518	4,566	5,174	5,735	5,195	5,065					

% NEET	Nov 06 Target	Jul-05	Aug	Sep	Oct	Nov	Dec	Jan-06	Feb	Mar	April	May	June	July	Aug	Sep	Oct	Nov	Dec	Jan-07	Feb	Mar
Barking & Dagenham	11.5%	15.4%	16.8%	15.5%	11.4%	11.9%	12.2%	12.4%	12.0%	11.7%	12.1%	12.6%	12.9%	10.1%	12.8%	12.2%	11.8%	10.6%				
Bexley	6.6%	6.9%	6.8%	7.5%	6.1%	6.6%	6.4%	6.8%	7.5%	7.5%	8.3%	8.7%	9.1%	7.5%	7.3%	7.2%	7.0%	6.2%				
City	na	na	na	na	na	0.7%	0.7%	0.8%	0.8%	0.6%	0.8%	0.9%	0.7%	0.2%	0.7%	1.0%	0.6%	0.4%				
Greenwich	10.4%	13.8%	14.6%	14.1%	12.1%	10.5%	11.8%	12.3%	12.5%	11.8%	13.2%	14.3%	14.7%	9.8%	13.5%	11.7%	11.5%	10.7%				
Hackney	14.0%	19.7%	20.8%	19.5%	18.5%	16.5%	15.8%	13.6%	13.3%	12.7%	13.9%	15.1%	16.2%	14.9%	16.6%	16.3%	13.1%	12.1%				
Havering	6.0%	9.2%	9.7%	12.4%	11.0%	7.0%	6.8%	7.4%	8.0%	7.2%	6.7%	6.6%	6.6%	6.5%	7.2%	8.5%	5.9%	5.8%				
Lewisham	8.3%	9.9%	10.6%	10.1%	10.0%	8.6%	8.7%	8.0%	8.2%	8.4%	8.6%	9.1%	9.5%	9.1%	7.8%	7.2%	6.1%	6.2%				
Newham	8.7%	13.8%	14.7%	16.0%	11.9%	9.4%	9.4%	9.4%	10.3%	10.4%	11.6%	12.3%	12.3%	12.9%	16.8%	15.0%	11.6%	9.3%				
Redbridge	4.5%	7.4%	7.9%	8.4%	7.2%	6.1%	6.3%	6.8%	6.6%	6.8%	6.6%	6.8%	7.6%	7.1%	7.9%	8.4%	5.4%	4.3%				
Tower Hamlets	na	na	na	na	na	12.3%	12.6%	13.8%	13.6%	13.3%	14.3%	15.2%	16.2%	15.6%	19.8%	19.0%	13.0%	9.9%				
East London	8.3%	11.5%	12.2%	12.7%	10.6%	9.2%	9.3%	9.5%	9.8%	9.5%	10.0%	10.5%	10.9%	9.7%	11.3%	11.0%	8.8%	7.9%				



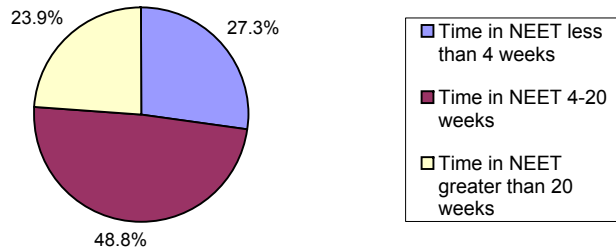
Note:

This table shows how long your NEET group have been NEET for. A higher % in 'less than 4 weeks' or '4-20 weeks' is an indicator your NEET group is moving on, whereas a high % in 'greater than 20 weeks' is an indicator your NEET group is not moving on as quickly.

Tab 5: November NEET Cohort - Time spent in NEET

	NEET Cohort	% of all LECP	Time in NEET	Time in NEET	Time in NEET	Total
	Young People aged 16-18 years	NEETs	less than 4 weeks	4-20 weeks	greater than 20 weeks	
	No.	%	%	%	%	%
Barking and Dagenham	640	12.6	32.0%	47.0%	20.9%	100.0%
Bexley	430	8.5	28.8%	50.0%	21.2%	100.0%
City	2	0.0	0.0%	100.0%	0.0%	100.0%
Greenwich	713	14.1	27.2%	53.3%	19.5%	100.0%
Hackney	565	11.2	26.4%	49.7%	23.9%	100.0%
Havering	554	10.9	23.3%	55.2%	21.5%	100.0%
Lewisham	456	9.0	27.4%	49.1%	23.5%	100.0%
Newham	753	14.9	29.9%	41.4%	28.7%	100.0%
Redbridge	379	7.5	21.1%	47.5%	31.4%	100.0%
Tower Hamlets	573	11.3	26.7%	47.3%	26.0%	100.0%
East London	5,065	100.0	27.3%	48.8%	23.9%	100.0%

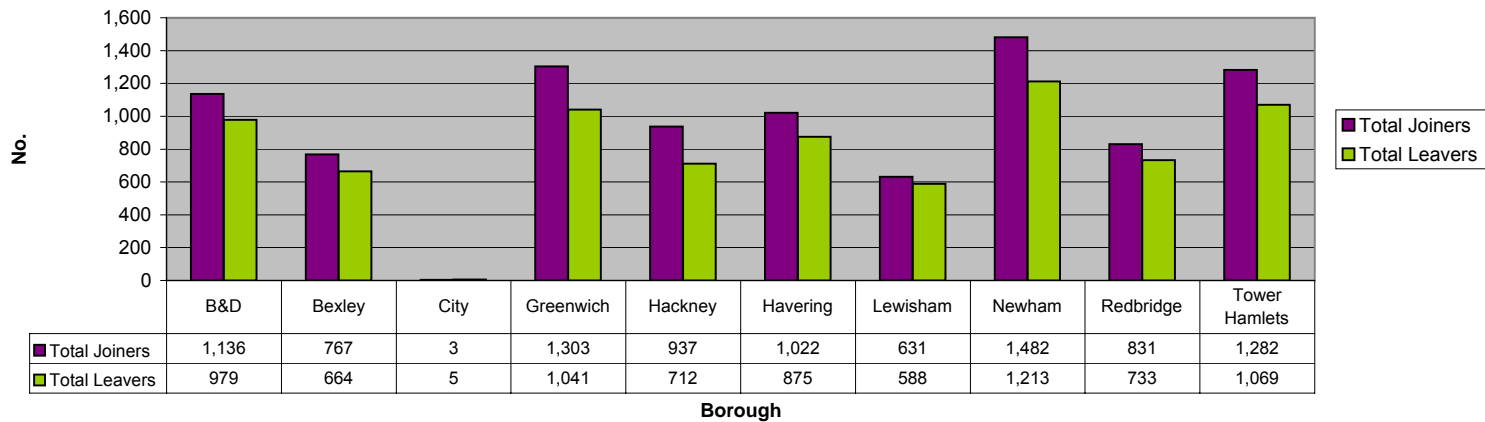
Chart 3: Time spent in NEET - East London



Note:

This shows the number of total young people joining and leaving the NEET Group in the year to date (starting April 06). For a breakdown for each area by month see Tab 7.

Chart 4: NEET Joiners & Leavers - 2006/07 Year to date



Tab 6: East London NEET Joiners & Leavers: Young People 16-18 years who have completed compulsory education

Note:
This shows the number of young people joining and leaving the NEET Group this month. For totals by month see Tab 7.

	Aged 16	Aged 17	Aged 18	16-18 Total	Aged 19	Aged 20+	Cohort Total
Total Joining NEET Group	347	545	627	1,519	235	10	1,764
Joining NEET from							
Education	240	179	117	536	85	4	625
Employment	20	58	27	105	18	0	123
Government supported training	12	34	23	69	14	1	84
Personal development opportunities	2	4	6	12	2	0	14
NEET in other area	0	0	0	0	0	0	0
Other (inc custodial sentence)	61	116	107	284	80	2	366
Currency re-established	12	154	347	513	36	3	552

	Aged 16	Aged 17	Aged 18	16-18 Total	Aged 19	Aged 20+	Cohort Total
Total Leaving NEET Group	332	554	615	1,501	483	24	2,008
Leaving NEET to							
Education	78	123	140	341	92	2	435
Employment	126	210	231	567	124	6	697
Government Supported Training	62	89	66	217	24	1	242
Personal Development Opportunities	19	37	32	88	15	0	103
NEET in other area	3	4	2	9	1	0	10
Custodial Sentence	4	6	3	13	3	1	17
Moved Away	15	29	33	77	16	4	97
Cannot Be Contacted	5	15	20	40	59	0	99
Refused to disclose activity	0	1	7	8	0	0	8
Currency Expired	10	25	63	98	0	0	98
Unknown Activity	2	7	10	19	15	0	34
Other Reason	8	8	8	24	134	10	168

Tab 7: NEET Joiners & Leavers - Young People 16-18 years who have completed compulsory education

Joiners	B&D	Bexley	City	Greenwich	Hackney	Havering	Lewisham	Newham	Redbridge	Tower Hamlets	Totals
Apr-06	106	68	1	132	91	71	60	80	73	83	765
May	72	49	0	85	78	68	55	113	62	101	683
June	75	63	0	71	66	77	36	89	86	87	650
July	76	49	0	80	99	115	85	172	82	140	898
Aug	133	79	0	195	109	112	51	244	91	219	1,233
Sept	294	187	2	299	171	268	142	311	214	316	2,204
Oct	178	153	0	239	175	139	78	189	114	177	1,442
Nov	202	119	0	202	148	172	124	284	109	159	1,519
Dec											
Jan 07											
Feb											
March											
Total Joiners	1,136	767	3	1,303	937	1,022	631	1,482	831	1,282	9,394

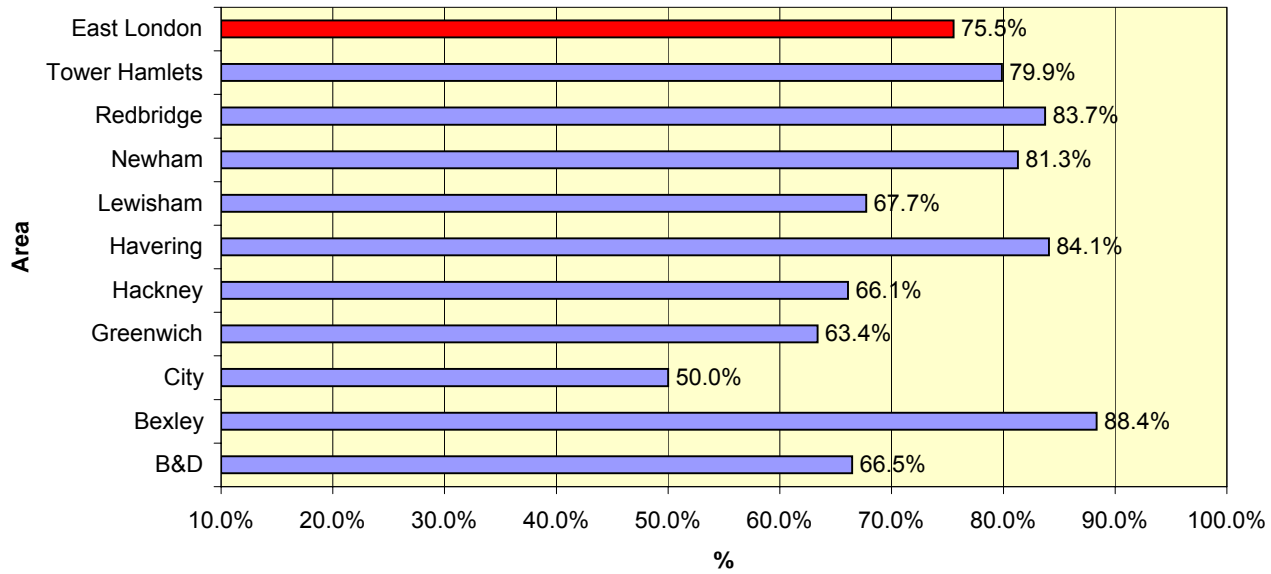
Leavers	B&D	Bexley	City	Greenwich	Hackney	Havering	Lewisham	Newham	Redbridge	Tower Hamlets	Totals
Apr-06	34	19	0	52	42	46	15	86	46	68	408
May	40	23	0	21	25	71	20	73	46	47	366
June	66	38	0	37	17	80	5	78	26	34	381
July	235	134	2	334	166	131	125	152	109	173	1,561
Aug	27	72	1	51	25	46	44	20	32	53	371
Sept	184	108	1	199	146	140	131	287	141	180	1,517
Oct	219	147	0	144	163	196	156	250	190	309	1,774
Nov	174	123	1	203	128	165	92	267	143	205	1,501
Dec											
Jan 07											
Feb											
March											
Total Leavers	979	664	5	1,041	712	875	588	1,213	733	1,069	7,879

Tab 8: NEET Leavers Leaving to EET Outcomes - Young People aged 16-18 years who have left Compulsory Education

No.	B&D	Bexley	City	Greenwich	Hackney	Havering	Lewisham	Newham	Redbridge	Tower Hamlets	East London
Apr-06	34	19	0	50	38	42	13	69	44	53	362
May	36	21	0	21	24	58	18	62	43	47	330
June	43	38	0	37	16	53	5	42	25	33	292
July	32	72	1	41	23	58	12	19	26	37	321
Aug	22	55	1	32	20	40	36	16	21	44	287
Sept	68	80	0	100	73	68	121	175	80	120	885
Oct	161	82	0	78	97	131	64	174	149	192	1,128
Nov	139	111	0	172	95	147	67	212	106	164	1,213
Dec											
Jan 07											
Feb											
March											
Total	535	478	2	531	386	597	336	769	494	690	4,818

% of all leavers	B&D	Bexley	City	Greenwich	Hackney	Havering	Lewisham	Newham	Redbridge	Tower Hamlets	East London
Apr-06	100.0%	100.0%	-	96.2%	90.5%	91.3%	86.7%	80.2%	95.7%	77.9%	88.7%
May	90.0%	91.3%	-	100.0%	96.0%	81.7%	90.0%	84.9%	93.5%	100.0%	90.2%
June	65.2%	100.0%	-	100.0%	94.1%	66.3%	100.0%	53.8%	96.2%	97.1%	76.6%
July	13.6%	53.7%	-	12.3%	13.9%	44.3%	9.6%	12.5%	23.9%	21.4%	20.6%
Aug	81.5%	76.4%	100.0%	62.7%	80.0%	87.0%	81.8%	80.0%	65.6%	83.0%	77.4%
Sept	37.0%	74.1%	0.0%	50.3%	50.0%	48.6%	92.4%	61.0%	56.7%	66.7%	58.3%
Oct	73.5%	55.8%	-	54.2%	59.5%	66.8%	41.0%	69.6%	78.4%	62.1%	63.6%
Nov	79.9%	90.2%	-	84.7%	74.2%	89.1%	72.8%	79.4%	74.1%	80.0%	80.8%
Dec											
Jan 07											
Feb											
March											
Total to date	66.5%	88.4%	50.0%	63.4%	66.1%	84.1%	67.7%	81.3%	83.7%	79.9%	75.5%

Chart 5: % NEET Leavers going to Positive Outcomes - year to date

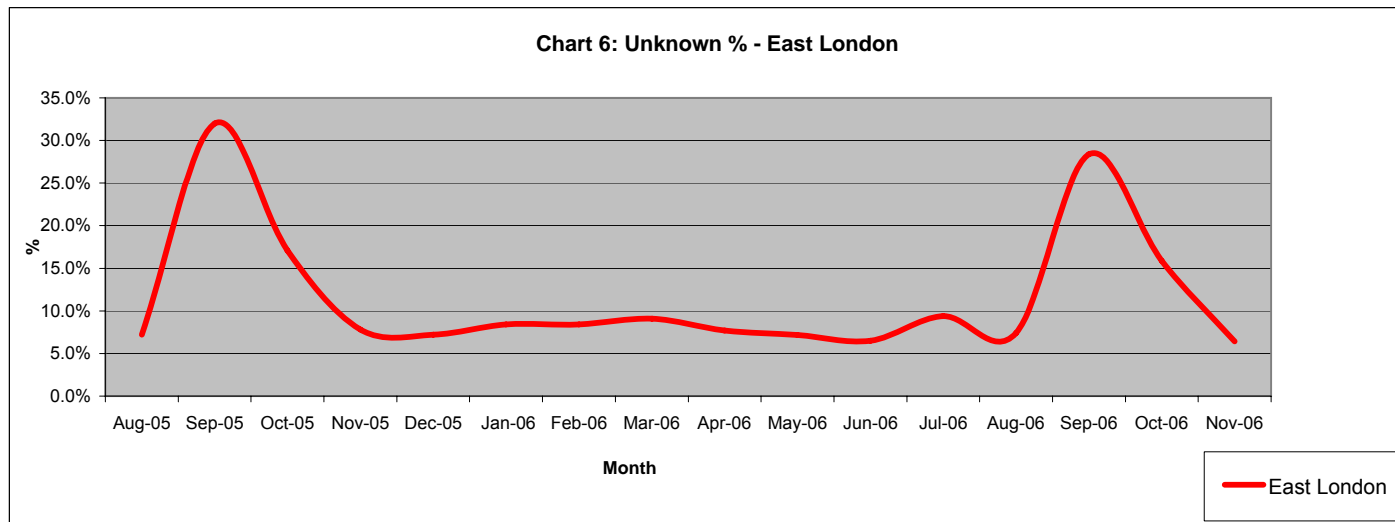


Unknowns Analysis

Tab 9: Unknowns - Young people 16-18 years who have completed compulsory education

	Unknowns Nov 05	Unknowns Nov 06	Unknowns Nov 05	Unknowns Nov 06	Change over the last year	Nov 06 Target	Current % above/below target	Risk indicator
	no.	no.	%	%	%	%	%	%
Barking and Dagenham	684	543	11.5%	8.2%	-28.4%	10.0%	-17.8%	Green
Bexley	256	109	3.3%	1.5%	-53.9%	6.1%	-74.9%	Green
City	127	31	23.6%	5.6%	-76.1%	5.0%	12.9%	Amber
Greenwich	480	367	6.5%	5.2%	-20.9%	10.0%	-48.5%	Green
Hackney	737	553	16.2%	10.5%	-35.4%	10.0%	4.7%	Amber
Havering	396	433	4.3%	4.3%	1.1%	5.5%	-21.4%	Green
Lewisham	366	524	4.8%	6.6%	39.0%	7.8%	-14.9%	Green
Newham	944	895	10.2%	9.9%	-3.6%	8.3%	18.8%	Red
Redbridge	684	362	7.5%	3.9%	-47.8%	5.0%	-21.6%	Green
Tower Hamlets	621	636	9.3%	9.8%	5.2%	8.7%	12.6%	Amber
East London	5,295	4,453	7.8%	6.4%	-17.5%	8.0%	-19.8%	Green

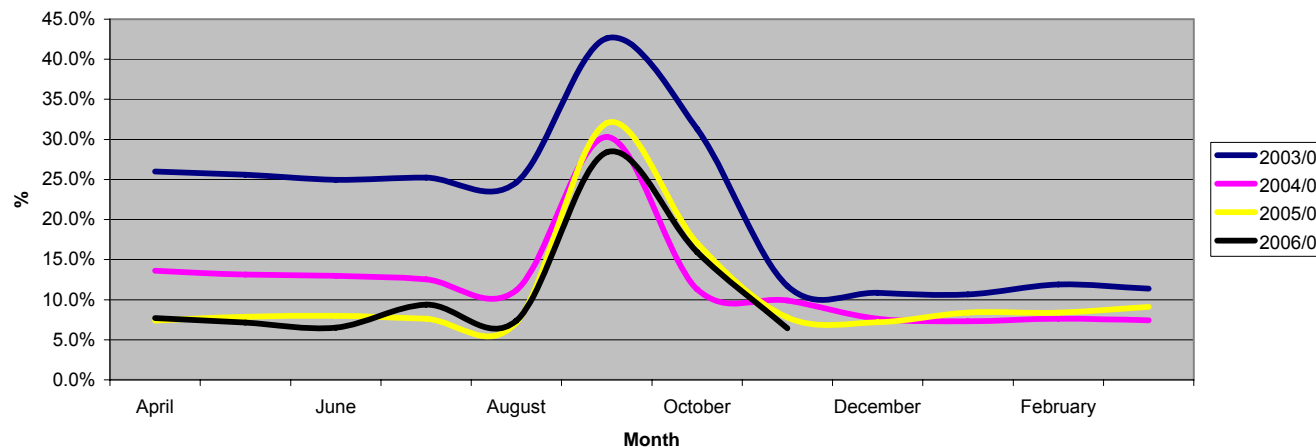
○ GREEN Nks below target
○ AMBER Nks up to 15% above target
○ RED Nks more than 15% above target



Tab 10: Unknowns: Young People 16-18 years who have completed compulsory education

Unknown %	Nov 2006 target(b)	Aug-05	Sep-05	Oct-05	Nov-05	Dec-05	Jan-06	Feb-06	Mar-06	Apr-06	May-06	Jun-06	Jul-06	Aug-06	Sep-06	Oct-06	Nov-06
Barking & Dagenham	10.0%	8.4%	30.3%	18.9%	11.5%	10.0%	11.4%	10.1%	9.7%	7.3%	6.9%	6.9%	12.7%	11.0%	22.4%	20.5%	8.2%
Bexley	6.1%	3.9%	34.8%	5.4%	3.3%	3.2%	3.6%	4.0%	3.0%	1.5%	1.1%	0.8%	2.3%	1.9%	18.9%	11.9%	1.5%
City	10.0%	3.8%	23.3%	23.6%	23.6%	23.8%	26.4%	26.4%	8.8%	8.7%	8.1%	6.3%	6.0%	5.7%	19.0%	13.8%	5.6%
Greenwich	5.0%	4.4%	27.4%	8.5%	6.5%	10.7%	10.6%	10.1%	9.6%	6.8%	6.4%	5.8%	11.3%	7.3%	20.2%	11.4%	5.2%
Hackney	10.0%	16.8%	32.7%	21.4%	16.2%	14.0%	13.7%	13.2%	16.4%	14.5%	13.4%	12.6%	17.2%	14.6%	34.8%	20.3%	10.5%
Havering	5.5%	4.2%	34.4%	26.7%	4.3%	4.1%	4.8%	4.9%	7.3%	5.2%	4.7%	4.7%	6.7%	5.1%	30.1%	11.3%	4.3%
Lewisham	7.8%	4.9%	31.0%	10.9%	4.8%	1.7%	4.4%	3.6%	3.3%	2.4%	2.4%	2.1%	3.9%	3.7%	19.9%	11.7%	6.6%
Newham	8.3%	9.6%	41.1%	21.4%	10.2%	9.6%	11.0%	12.3%	13.0%	14.1%	13.4%	13.3%	16.0%	12.0%	40.4%	24.4%	9.9%
Redbridge	5.0%	7.2%	30.6%	7.2%	7.5%	6.2%	7.5%	7.7%	9.3%	8.0%	7.5%	5.0%	5.8%	4.3%	33.0%	14.6%	3.9%
Tower Hamlets	8.7%	9.2%	22.6%	18.3%	9.3%	7.8%	9.8%	10.7%	12.0%	12.1%	11.1%	10.7%	14.1%	11.4%	35.1%	21.3%	9.8%
East London	8.0%	7.2%	32.0%	17.1%	7.8%	7.2%	8.4%	8.4%	9.1%	7.7%	7.2%	6.5%	9.4%	7.4%	28.4%	15.9%	6.4%
London		N/A	37.1%	19.4%	7.0%	6.4%	6.8%	7.2%	7.2%	6.1%	5.7%	5.6%	6.4%	5.8%	23.7%	10.6%	N/A
England		7.3%	31.0%	14.7%	6.8%	6.5%	6.1%	5.8%	5.5%	5.8%	5.6%	5.6%	6.5%	8.9%	28.6%	13.0%	N/A

Chart 7: Unknown % - East London



In Learning

Note:

'In Learning' includes full and part time education, training and employment funded through Government Supported Training, and employment with training to NVQ level 2 or above.

Tab 11: In learning - Young people 16-18 years who have completed compulsory education

	Nov-05				Nov-06				% change in year	Risk Indicator
	16-18's total cohort	16-18's not known	16-18's in learning	% in learning	16-18's total cohort	16-18's not known	16-18's in learning	% in learning		
Barking and Dagenham	5,961	684	4,184	70.2%	6,608	543	4,652	70.4%	0.3%	Green
Bexley	7,708	256	5,626	73.0%	7,113	109	5,436	76.4%	4.7%	Green
City	537	127	406	75.6%	549	31	515	93.8%	24.1%	Green
Greenwich	7,370	480	5,482	74.4%	7,120	367	5,270	74.0%	-0.5%	Amber
Hackney	4,544	737	2,919	64.2%	5,281	553	3,929	74.4%	15.8%	Green
Havering	9,264	396	7,296	78.8%	10,016	433	7,808	78.0%	-1.0%	Amber
Lewisham	7,669	366	6,193	80.8%	7,897	524	6,505	82.4%	2.0%	Green
Newham	9,228	944	7,031	76.2%	9,080	895	6,860	75.6%	-0.8%	Amber
Redbridge	9,116	684	7,494	82.2%	9,237	362	7,859	85.1%	3.5%	Green
Tower Hamlets	6,665	621	4,898	73.5%	6,491	636	4,796	73.9%	0.5%	Green
East London	68,062	5,295	51,529	75.7%	69,392	4,453	53,630	77.3%	2.1%	Green

GREEN

Positive % change over last year

AMBER

Performance is either level or a negative % change over last year of less than 5%

RED

Negative % change over last year of 5% or more

Vulnerable Groups

Tab 12: Teenage Mothers

	Nov-05				Nov-06				(i) tracking more than 50% of the DoH estimate	(ii) more than 35% in EET	(iii) % not known within target level	Risk Indicator(a)		
	16-19 year old mothers known to CX	16-19 year old mothers known to CX in EET	% known to partnership in EET	% of teenage mothers situation unknown	16-19 year old mothers known to CX	DoH estimate of teenage mothers	% of DoH estimate known to the partnership	16-19 year old mothers known to CX in EET					% known to partnership in EET	% of teenage mothers situation unknown
Barking & Dagenham	98	28	28.6%	18.4%	121	250	48.4%	31	25.6%	7.4%	No	No	Yes	R
Bexley	70	16	22.9%	0.0%	64	167	38.3%	21	32.8%	6.3%	No	No	No	R
City	0													
Greenwich	118	23	19.5%	9.3%	133	284	46.8%	31	23.3%	17.3%	No	No	No	R
Hackney	103	33	32.0%	3.9%	104	297	35.0%	28	26.9%	9.6%	No	No	Yes	R
Havering	54	14	25.9%	13.0%	58	141	41.1%	17	29.3%	32.8%	No	No	No	R
Lewisham	168	39	23.2%	33.9%	154	313	49.2%	46	29.9%	16.9%	No	No	No	R
Newham	116	46	39.7%	19.0%	112	345	32.5%	48	42.9%	14.3%	No	Yes	No	R
Redbridge	102	28	27.5%	4.9%	105	174	60.3%	33	31.4%	21.0%	Yes	No	No	A
Tower Hamlets	51	21	41.2%	9.8%	43	204	21.1%	18	41.9%	25.6%	No	Yes	No	R
East London	880	248	28.2%	14.7%	894	2,175	41.1%	273	30.5%	16.9%	No	No	No	R

Risk Indicator(a)

(i) Is the Local Authority tracking more than 50% of the DoH estimate of teenage mothers in the area?

(ii) Are more than 35% of teenage mothers in EET?

(iii) Is the % of teenage mothers recorded as "situation not known" within the target level?

GREEN If the answer to all 3 of the above questions is yes

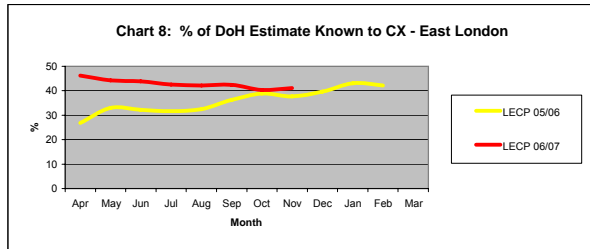
AMBER If the answer (i) is yes but either (ii) or (iii) is no

RED If the answer to (i) is no

GREEN

AMBER

RED



Tab 13: LDD

	Nov-05				Nov-06				% change over last year	Risk Indicator		
	16-19 year olds with LDD	16-19 year olds with LDD in EET	% of 16-19 year olds with LDD in EET	% whose current situation is not known	% of all 16-19 year olds in EET	16-19 year olds with LDD	16-19 year olds with LDD in EET	% of 16-19 year olds with LDD in EET			% whose current situation is not known	% of all 16-19 year olds in EET
Barking & Dagenham	1,812	1,303	71.9%	14.7%	78.1%	2,049	1,573	76.8%	9.7%	81.8%	6.8%	G
Bexley	473	386	81.6%	4.2%	89.0%	550	441	80.2%	1.5%	91.8%	-1.7%	A
City	3	1	33.3%	33.3%	77.8%	3	2	66.7%	0.0%	93.8%	100.0%	G
Greenwich	679	508	74.8%	8.4%	82.3%	697	494	70.9%	15.8%	81.3%	-5.3%	A
Hackney	897	586	65.3%	17.2%	59.3%	669	422	63.1%	9.4%	75.2%	-3.4%	A
Havering	1,753	1,445	82.4%	7.2%	64.7%	1,494	1,227	82.1%	9.4%	89.4%	-0.4%	A
Lewisham	575	469	81.6%	5.7%	67.4%	679	566	83.4%	5.0%	87.2%	2.2%	G
Newham	2,287	1,757	76.8%	11.8%	81.1%	1,884	1,335	70.9%	14.7%	80.2%	-7.8%	A
Redbridge	2,025	1,587	78.4%	10.7%	86.9%	1,787	1,472	82.4%	7.4%	90.3%	5.1%	G
Tower Hamlets	2,017	1,460	72.4%	9.5%	79.4%	1,340	887	66.2%	17.5%	77.9%	-8.6%	A
East London	12,521	9,502	75.9%	10.7%	83.3%	11,152	8,419	75.5%	11.2%	84.5%	-0.5%	A

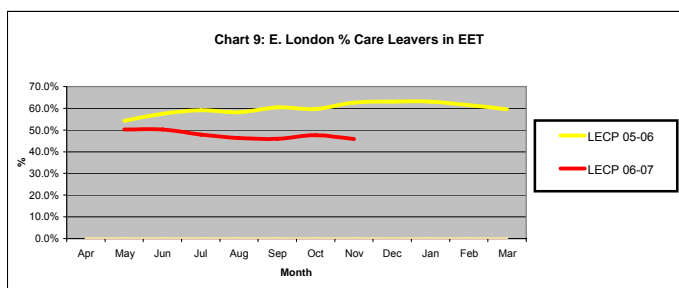
GREEN Positive %age change over last year.

AMBER Performance is either level or a negative %age change over last year of less than 5%.

RED Negative %age change over last year of 5% or more.

Tab 14: Care Leavers

	Nov-05			Nov-06			% not known within target level	ONS 2003/04 estimate - no. of Care Leavers	% of ONS estimate known to CX
	19 year old care leavers known to CX	% known to partnership in EET	% whose current situation is not known	19 year old care leavers known to CX	% known to partnership in EET	% whose current situation is not known			
Barking & Dagenham	18	50.0%	11.1%	7	57.1%	28.6%	N	35	20.0%
Bexley	14	50.0%	7.1%	7	57.1%	0.0%	Y	30	23.3%
City	-	-	-	-	-	-	-	-	-
Greenwich	26	57.7%	11.5%	16	56.3%	12.5%	N	35	45.7%
Hackney	13	53.8%	0.0%	22	27.3%	50.0%	N	50	44.0%
Havering	13	69.2%	23.1%	8	50.0%	25.0%	N	20	40.0%
Lewisham	23	87.0%	4.3%	5	60.0%	20.0%	N	60	8.3%
Newham	17	76.5%	11.8%	16	56.3%	25.0%	N	40	40.0%
Redbridge	19	63.2%	0.0%	17	35.3%	5.9%	N	20	85.0%
Tower Hamlets	23	52.2%	21.7%	13	30.8%	46.2%	N	30	43.3%
East London	166	62.7%	10.2%	111	45.8%	25.8%	N	320	34.7%



Tab 15: Activities of those identified with individual circumstances - East London, Nov 2006

Destination	Looked after / In care no.	Caring for own child(a) no.	Refugee/Asylum seeker no.	Carer not own child(b) no.	Substance misuse no.	Care Leaver(c) no.	Supervised by YoT no.	Looked after / In care %	Caring for own child(a) %	Refugee / Asylum seeker %	Carer not own child(b) %	Substance misuse %	Care Leaver(c) %	Supervised by YoT %
Compulsory education	262	17	62	11	39	2	214	-	-	-	-	-	-	-
Post Compulsory Education	606	969	677	144	145	196	1,485	100.0%	100.0%	100.0%	100.0%	100.0%	100.0%	100.0%
<i>EET Total</i>	369	311	502	83	73	89	737	60.9%	32.1%	74.2%	57.6%	50.3%	45.4%	49.6%
In education	305	231	467	52	40	63	402	50.3%	23.8%	69.0%	36.1%	27.6%	32.1%	27.1%
Employment	39	49	22	20	19	14	209	6.4%	5.1%	3.2%	13.9%	13.1%	7.1%	14.1%
Training	25	31	13	11	14	12	126	4.1%	3.2%	1.9%	7.6%	9.7%	6.1%	8.5%
<i>Personal development opportunities (PDO)</i>	8	9	4	1	3	3	21	1.3%	0.9%	0.6%	0.7%	2.1%	1.5%	1.4%
<i>NEET</i>	101	499	61	39	47	58	424	16.7%	51.5%	9.0%	27.1%	32.4%	29.6%	28.6%
Available to Labour Market	75	71	40	18	36	38	366	12.4%	7.3%	5.9%	12.5%	24.8%	19.4%	24.6%
Not available to Labour Market	26	428	21	21	11	20	58	4.3%	44.2%	3.1%	14.6%	7.6%	10.2%	3.9%
<i>Not EET or NEET</i>	14	1	20	0	5	3	90	2.3%	0.1%	3.0%	0.0%	3.4%	1.5%	6.1%
<i>Current situation not known</i>	114	149	90	21	17	43	213	18.8%	15.4%	13.3%	14.6%	11.7%	21.9%	14.3%
Total Cohort	868	986	739	155	184	198	1,699	-	-	-	-	-	-	-

(a) Includes males caring for their own child.

(b) Are young carers caring for someone other than their child.

(c) Includes all Care Leavers and not just those aged 19 years.

Notes:
 1. The '% EET' helps you monitor whether particular groups are more likely to be EET in your area than other groups in your area.
 2. The '% of cohort' gives the ethnic breakdown of your areas cohort.
 3. The '% of cohort' in the 'No Ethnic Information' category can be used to monitor whether 'unknown' ethnicity totals are acceptable for your area. If the % of young people whose ethnicity is unknown is 11% or more, this undermines the reliability of the data on individual groups - especially where actual numbers are small.

Tab 16: Ethnic Monitoring

Nov 06	White			Mixed Race			Black or Black British			Asian or Asian British			Chinese			Other			No Ethnic Information			Post 16 Cohort
	No.	% EET(a)	% of Cohort	No.	% EET(a)	% of Cohort	No.	% EET(a)	% of Cohort	No.	% EET(a)	% of Cohort	No.	% EET(a)	% of Cohort	No.	% EET(a)	% of Cohort	No.	% EET(a)	% of Cohort	Total Post 16 Cohort
Barking & Dagenham	6,020	80.8%	64.5%	232	81.9%	2.5%	1,221	87.2%	13.1%	728	91.9%	7.8%	37	94.6%	0.4%	161	86.3%	1.7%	936	79.7%	10.0%	9,335
Bexley	8,186	89.7%	81.0%	160	90.6%	1.6%	387	93.3%	3.8%	328	95.7%	3.2%	83	97.6%	0.8%	379	91.3%	3.8%	577	97.1%	5.7%	10,100
City	269	92.9%	40.6%	17	100.0%	2.6%	11	90.9%	1.7%	34	91.2%	5.1%	9	100.0%	1.4%	16	93.8%	2.4%	306	93.8%	46.2%	
Greenwich	5,578	74.6%	54.9%	602	81.2%	5.9%	1,525	87.3%	15.0%	677	92.8%	6.7%	138	91.3%	1.4%	456	81.6%	4.5%	1,189	91.1%	11.7%	10,165
Hackney	1,755	66.2%	19.5%	561	69.3%	6.2%	3,083	79.6%	34.2%	1,289	87.0%	14.3%	114	81.6%	1.3%	775	75.7%	8.6%	1,434	58.5%	15.9%	9,011
Havering	10,884	88.8%	75.8%	313	88.5%	2.2%	854	95.3%	5.9%	736	97.1%	5.1%	88	100.0%	0.6%	151	92.1%	1.1%	1,332	84.2%	9.3%	14,358
Lewisham	4,348	85.2%	38.6%	874	88.6%	7.8%	3,536	89.1%	31.4%	453	93.6%	4.0%	176	94.9%	1.6%	419	90.2%	3.7%	1,463	78.5%	13.0%	11,269
Newham	3,023	67.4%	23.3%	421	75.5%	3.3%	3,066	83.7%	23.7%	5,060	86.9%	39.1%	60	90.0%	0.5%	532	76.9%	4.1%	785	76.3%	6.1%	12,947
Redbridge	4,880	88.3%	39.1%	234	79.5%	1.9%	1,651	86.1%	13.2%	4,247	94.5%	34.1%	110	94.5%	0.9%	276	90.6%	2.2%	1,071	89.9%	8.6%	12,469
Tower Hamlets	2,021	67.2%	21.6%	188	66.5%	2.0%	853	81.2%	9.1%	5,158	79.9%	55.2%	75	86.7%	0.8%	263	75.7%	2.8%	779	88.7%	8.3%	9,337
East London	46,964	82.7%	47.1%	3,602	80.8%	3.6%	16,187	85.7%	16.2%	18,710	87.8%	18.8%	890	92.4%	0.9%	3,428	82.7%	3.4%	9,872	81.4%	9.9%	99,653

(a) is the % within each ethnic group who are EET.

Risk indicator
 ○ GREEN 'No ethnicity information' less than 11%
 ○ AMBER 'No ethnicity information' between 11 and 15%
 ○ RED 'No ethnicity information' more than 15%

Chart 10: % With no Ethnicity Information

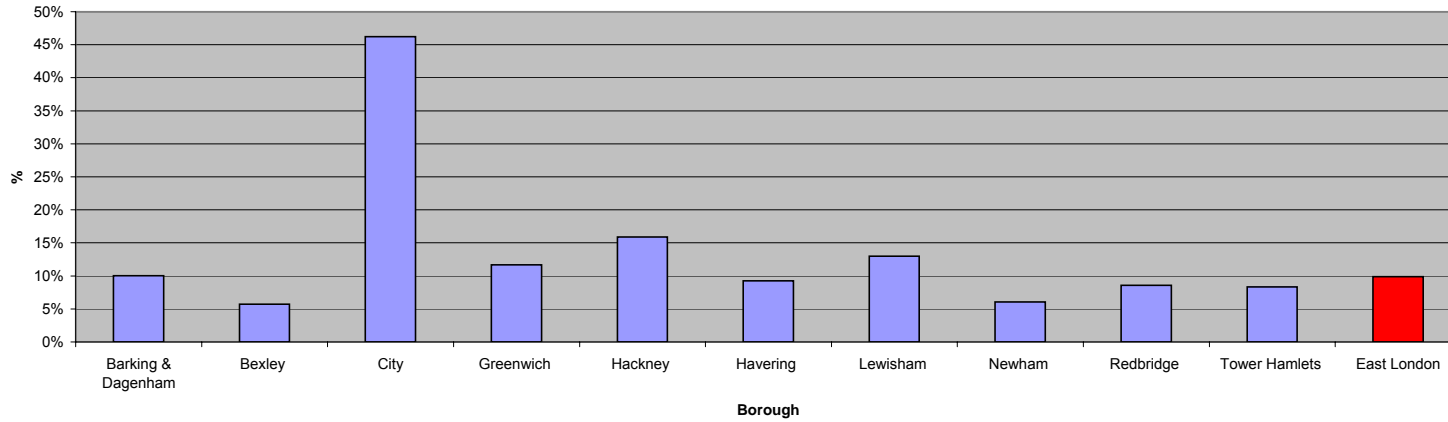


Chart 11: % in EET by Ethnicity - East London

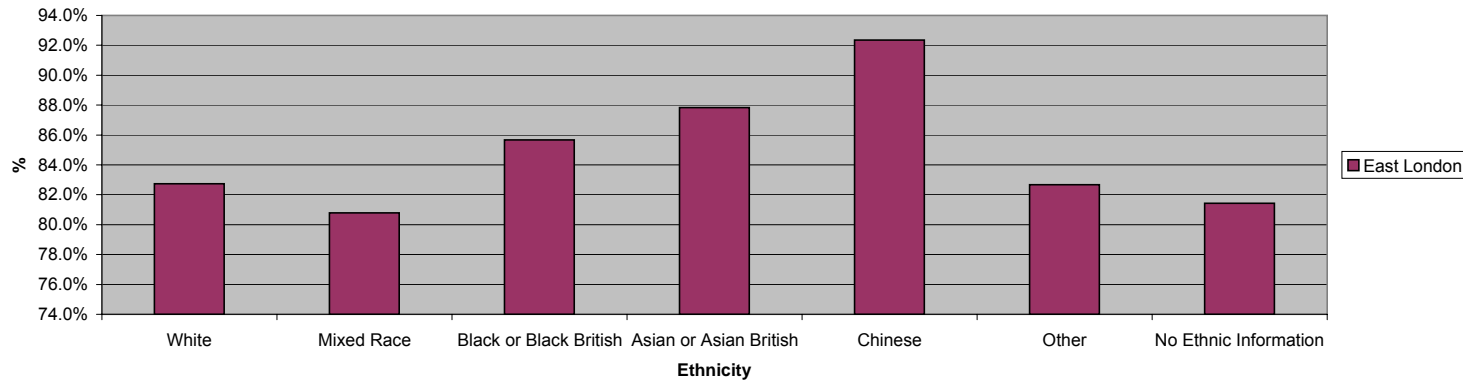
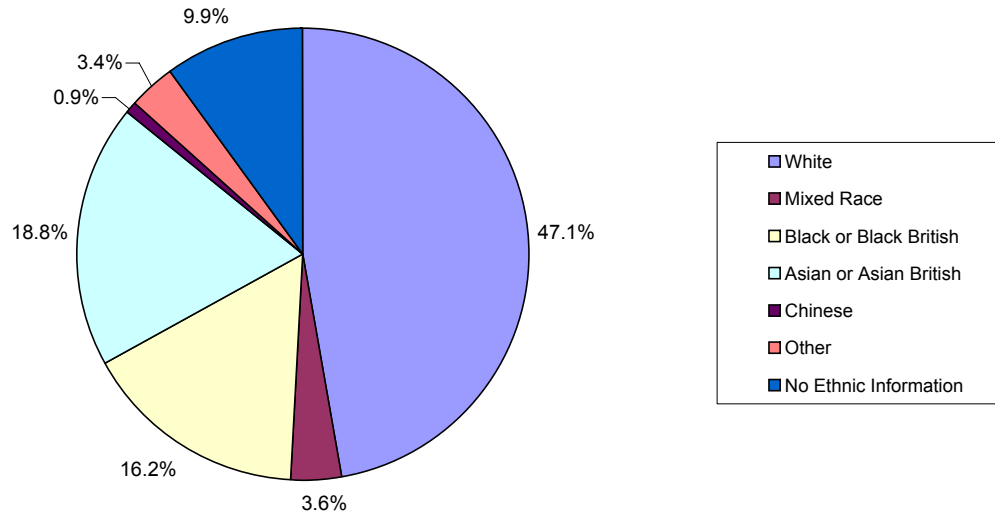


Chart 12: Ethnicity of Post 16 Cohort - East London



Tab 17: Ethnicity by Destination: East London Nov 2006

	White British	White Irish	Any Other White Background	White And Black Caribbean	White And Black African	White And Asian
Cohort total	43,150	577	3,237	1,346	489	326
EET Total	35,753	437	2,667	1,043	408	294
In education, post Year 11	24,531	320	2,231	811	364	256
Employment	10,244	91	356	181	35	35
Training	978	26	80	51	9	3
NEET + PDO	4,136	94	210	201	42	20
Personal Development Opportunities	213	2	13	9	0	1
NEET Group	3,923	92	197	192	42	19
Available to labour market	3,224	79	170	161	38	16
Not available to labour market	699	13	27	31	4	3
Other (not EET or NEET)	89	0	7	5	2	2
Current situation not known	3,172	46	353	97	37	10

Cohort total	100.0%	100.0%	100.0%	100.0%	100.0%	100.0%
EET Total	82.9%	75.7%	82.4%	77.5%	83.4%	90.2%
In education, post Year 11	56.9%	55.5%	68.9%	60.3%	74.4%	78.5%
Employment	23.7%	15.8%	11.0%	13.4%	7.2%	10.7%
Training	2.3%	4.5%	2.5%	3.8%	1.8%	0.9%
NEET + PDO	9.6%	16.3%	6.5%	14.9%	8.6%	6.1%
Personal Development Opportunities	0.5%	0.3%	0.4%	0.7%	0.0%	0.3%
NEET Group	9.1%	15.9%	6.1%	14.3%	8.6%	5.8%
Available to labour market	7.5%	13.7%	5.3%	12.0%	7.8%	4.9%
Not available to labour market	1.6%	2.3%	0.8%	2.3%	0.8%	0.9%
Other (not EET or NEET)	0.2%	0.0%	0.2%	0.4%	0.4%	0.6%
Current situation not known	7.4%	8.0%	10.9%	7.2%	7.6%	3.1%

Tab 17: Ethnicity by Destination:

	Any Other Mixed Background	Indian	Pakistani	Bangladeshi	Any Other Asian Background	Caribbean	African
Cohort total	1,441	4,984	3,171	8,258	2,297	4,399	7,837
EET Total	1,165	4,638	2,835	6,856	2,104	3,573	6,888
In education, post Year 11	974	4,317	2,592	5,736	1,973	3,139	6,587
Employment	157	263	179	665	87	267	200
Training	34	58	64	455	44	167	101
NEET + PDO	167	176	161	644	88	487	393
Personal Development Opportunities	12	7	7	60	9	32	20
NEET Group	155	169	154	584	79	455	373
Available to labour market	131	157	135	524	64	392	305
Not available to labour market	24	12	19	60	15	63	68
Other (not EET or NEET)	11	2	3	20	0	18	30
Current situation not known	98	168	172	738	105	321	526

Cohort total	100.0%	100.0%	100.0%	100.0%	100.0%	100.0%	100.0%
EET Total	80.8%	93.1%	89.4%	83.0%	91.6%	81.2%	87.9%
In education, post Year 11	67.6%	86.6%	81.7%	69.5%	85.9%	71.4%	84.1%
Employment	10.9%	5.3%	5.6%	8.1%	3.8%	6.1%	2.6%
Training	2.4%	1.2%	2.0%	5.5%	1.9%	3.8%	1.3%
NEET + PDO	11.6%	3.5%	5.1%	7.8%	3.8%	11.1%	5.0%
Personal Development Opportunities	0.8%	0.1%	0.2%	0.7%	0.4%	0.7%	0.3%
NEET Group	10.8%	3.4%	4.9%	7.1%	3.4%	10.3%	4.8%
Available to labour market	9.1%	3.2%	4.3%	6.3%	2.8%	8.9%	3.9%
Not available to labour market	1.7%	0.2%	0.6%	0.7%	0.7%	1.4%	0.9%
Other (not EET or NEET)	0.8%	0.0%	0.1%	0.2%	0.0%	0.4%	0.4%
Current situation not known	6.8%	3.4%	5.4%	8.9%	4.6%	7.3%	6.7%

Tab 17: Ethnicity by Destination:

	Any Other Black Background	Chinese	Any Other Ethnic Group	Refused	Information Not Obtained	Total
Cohort total	3,951	890	3,428	165	9,707	99,653
EET Total	3,408	822	2,834	153	7,886	83,764
In education, post Year 11	3,065	786	2,505	142	6,889	67,218
Employment	242	30	265	9	913	14,219
Training	101	6	64	2	84	2,327
NEET + PDO	279	24	260	8	238	7,628
Personal Development Opportunities	19	1	10	0	13	428
NEET Group	260	23	250	8	225	7,200
Available to labour market	214	20	207	6	181	6,024
Not available to labour market	46	3	43	2	44	1,176
Other (not EET or NEET)	20	1	8	0	26	244
Current situation not known	244	43	326	4	1,557	8,017

Cohort total	100.0%	100.0%	100.0%	100.0%	100.0%	100.0%
EET Total	86.3%	92.4%	82.7%	92.7%	81.2%	84.1%
In education, post Year 11	77.6%	88.3%	73.1%	86.1%	71.0%	67.5%
Employment	6.1%	3.4%	7.7%	5.5%	9.4%	14.3%
Training	2.6%	0.7%	1.9%	1.2%	0.9%	2.3%
NEET + PDO	7.1%	2.7%	7.6%	4.8%	2.5%	7.7%
Personal Development Opportunities	0.5%	0.1%	0.3%	0.0%	0.1%	0.4%
NEET Group	6.6%	2.6%	7.3%	4.8%	2.3%	7.2%
Available to labour market	5.4%	2.2%	6.0%	3.6%	1.9%	6.0%
Not available to labour market	1.2%	0.3%	1.3%	1.2%	0.5%	1.2%
Other (not EET or NEET)	0.5%	0.1%	0.2%	0.0%	0.3%	0.2%
Current situation not known	6.2%	4.8%	9.5%	2.4%	16.0%	8.0%

Interventions

Tab 18: East London Interventions to date

	apr	may	jun	jul	aug	sep	oct	nov	dec	jan	feb	mar	Total
2005-06 Compulsory Education	3,717	4,323	4,316	4,456	4,051	3,286	3,522	5,080	3,805	4,248	5,392	7,596	53,792
2005-06 Post School	8,398	7,965	9,514	7,810	8,389	12,503	11,530	12,248	7,706	11,025	11,009	13,278	121,375
Total 05-06	12,115	12,288	13,830	12,266	12,440	15,789	15,052	17,328	11,511	15,273	16,401	20,874	175,167
2006-07 Compulsory Education	2,483	4,209	5,220	4,954	2,014	2,253	4,127	5,381					
2006-07 Post School	7,769	9,497	9,101	9,659	14,783	15,116	14,471	15,616					
Total 06-07	10,252	13,706	14,321	14,613	16,797	17,369	18,598	20,997					

Tab 19: Interventions - Nov 06

Borough	Young people in compulsory education	Young people who have completed compulsory education	Total	% with young people in compulsory education	% with young people who have completed compulsory education
Barking & Dagenham	407	1,386	1,793	22.7%	77.3%
Bexley	759	1,252	2,011	37.7%	62.3%
City	53	12	65	81.5%	18.5%
Greenwich	813	1,776	2,589	31.4%	68.6%
Hackney	391	1,191	1,582	24.7%	75.3%
Havering	655	1,805	2,460	26.6%	73.4%
Lewisham	935	1,598	2,533	36.9%	63.1%
Newham	473	2,770	3,243	14.6%	85.4%
Redbridge	554	1,663	2,217	25.0%	75.0%
Tower Hamlets	341	2,163	2,504	13.6%	86.4%
East London	5,381	15,616	20,997	25.6%	74.4%

Tab 20: East London Interventions

Interventions with young people in compulsory education	Nov-05	%	Nov-06	%	% Change
One to one personal contact	4,657	91.7%	5,118	95.1%	9.9%
Telephone	170	3.3%	232	4.3%	36.5%
E-mail/letter/text	253	5.0%	31	0.6%	-87.7%
Other (excl contact with parents)	0	0.0%	0	0.0%	0.0%
Total Interventions	5,080	100.0%	5,381	100.0%	5.9%

Interventions with young people in post compulsory education	Nov-05	%	Nov-06	%	% Change
One to one personal contact	7594	61.4%	9,310	59.6%	22.6%
Telephone	4187	33.8%	6,133	39.3%	46.5%
E-mail/letter/text	589	4.8%	173	1.1%	-70.6%
Other (excl contact with parents)	0	0.0%	0	0.0%	0.0%
Total Interventions	12,370	100.0%	15,616	100.0%	26.2%

Definitions

Cohort

East London CCIS (Client Caseload Information System) contains details of young people aged 13-19 years and up to 25 years for young people with LDD.

The cohort for DfES 'NEET' & 'Unknown' target purposes is young people aged 16-18 years who have completed compulsory education and are either:

- Educated within LECP or
- Resident within LECP and in Employment/Training/NEET destinations

EET Group

The EET group in a particular area is made up of young people aged 16-18 years who have left compulsory education who meet the following criteria:

Current Destination is:-

- * Full Time Education
- * Full Time Employment
- * Government Sponsored Training e.g. E2E, Apprenticeships etc.
- * Part Time Education
- * Part Time Employment
- * Personal Development Opportunities
- * Gap Year Students

NEET Group

The NEET group in a particular area is made up of young people aged 16-18 years who have left compulsory education who meet the following criteria:

Current Destination is:-

- * Any 'unemployed' category
- * Pregnancy
- * Not Available Illness/Health Issue
- * Not Available Other
- * Not Available Religious Grounds
- * Never Economically Active
- * Supporting Family Young Carer
- * Supporting Family Teenage Parent

Unadjusted NEET

Unadjusted NEET

The unadjusted NEET percentage is the number of young people aged 16-18 in the NEET group divided by the number of young people aged 16-18 who are EET plus the number of young people aged 16-18 who are NEET i.e. $NEET \div (EET + NEET)$

Adjusted NEET

From DfES research it was determined that for those young people whose currency had lapsed from an EET destination 92% were likely to still be EET, and the remaining 8% were likely to be NEET. For those whose currency had lapsed from a NEET destination 58% would still be NEET and 42% would be EET. Each month these assumptions are applied to those young people whose currency has lapsed to derive an adjusted NEET & EET number. The adjustment assumes

- 8% of the lapsed EET are NEET
- 58% of the lapsed NEET are NEET
- 92% of the lapsed EET are EET
- 42% of the lapsed NEET are EET

The adjusted NEET % is calculated in the same way as the unadjusted NEET %. It is however based on EET and NEET figures that include the adjustments made for young people whose currency has lapsed i.e. the adjusted NEET % = $adjusted\ NEET \div (adjusted\ EET + adjusted\ NEET)$.

In Learning Group

The In Learning Group is made up of young people aged 16-18 years who have completed compulsory education and meet the following criteria:

Current Destination

- * Full Time Education
- * Part Time Education
- * Employment Funded through GST with training to NVQ2 or above
- * GST – FMA/Other WBL
- * GST – E2E
- * Other GST (e.g. New Deal)

Unknown Group

Current Situation Not Known = Currency NEET + Currency EET + Other Situation Not Known + Currency Other (Asylum Seekers and Custodial Sentence)

Currency Lapsed

Connexions is required to make contact with and confirm the destination of young people in their cohort within a specified period of time (see Currency Rules). If a young person does not have their destination confirmed within this time period they become 'lapsed'. Instead of being counted under their destination group they should be counted under 'Currency NEET' or 'Currency EET' i.e. as part of the 'Unknown' group. This is a manual process done by the MI team on a regular basis.

Target notes

Partnerships are expected to demonstrate progress towards the 2006 target during 2005-06, and progress will be a key element of the “health check”.

NEET targets

1. Nationally the target is "to reduce the proportion of 16-18 year olds not in education, employment or training by 2 percentage points by 2010" (DfES PSA). The PSA target will be measured using the annual participation estimates published by DfES in June each year. This is an established source that has been used to measure NEET for many years. The participation estimates are only available for England as a whole, although data on participation in education and training amongst 16 and 17 year olds is published at LA level. Each Connexions Partnership has an indicative target for November 2006. Partnership targets will continue to be set and monitored using data collected through CCIS.

2. The NEET targets apply to 16-18 year olds in the post-compulsory education cohort. Because the % NEET has a cyclical pattern, comparison should be made with the same period of the last year.

Unknown targets

3. Client tracking is an important element in reducing NEET. Keeping ‘not knowns’ low is also vital if Connexions data is to be used to monitor changes in NEET and participation, and is to be seen to be reliable.

4. The ‘not known’ targets apply to 16-18 year olds in the post-compulsory education cohort. Partnerships should endeavour to keep the proportion of 16-18 year olds recorded as ‘situation not known’ within the target level throughout the year (other than July – October when young people leave school or college). They should also endeavour to keep the proportion of teenage mothers and care leavers ‘not known’ within the target level so progress made in helping these young people re-engage in work and learning can be monitored.

LDD targets

5. Nationally, young people with learning difficulties and disabilities (LDD) are twice as likely to be NEET than their peers. Helping young people with LDD to remain in work and learning is an element of achieving the PSA target and remains an important objective of the Valuing People strategy to which Connexions Partnerships make a contribution.

For monitoring purposes, the target group will be 16-19 year olds, rather than 16-24 year olds. This will enable the performance of this group to be compared with the population as a whole. Partnerships will be expected to show that:

- i. the proportion of young people with LDD in EET is increasing year on year;
- ii. the gap between young people with LDD in EET, and proportion of all 16-19 year olds in EET, is closing;
- iii. the percentage of young people with LDD recorded as ‘situation not known’ is within the ‘unknown’ target level

For monitoring purposes, the target group will be 16-19 year olds, rather than 16-24 year olds. This will enable the performance of this group to be compared with the population as a whole.

Teenage Mothers

6. GO's will assess:

- (i) the proportion of the DoH estimate of teenage mothers who are known to Connexions. Where less than 50% of teenage mothers are known to Connexions, this will be assessed as a risk;
- (ii) The proportion of teenage mothers in employment, education and training using data from CCIS, and calculated as follows:

$$\frac{\text{number of 16-19 year old mothers in EET}}{\text{number of 16-19 yr old mothers known to the Partnership}} \times 100$$

Where less than 35% of teenage mothers are in employment, education or training, this will be assessed as a risk.

- (ii) the proportion of teenage mothers whose current situation is not known. Teenage mothers are a priority group and Partnerships are expected to maintain not knowns at their target level

Care Leavers

This is one of a suite of performance indicators put in place to support the DfES PSA target to improve the educational achievement and support provided to vulnerable groups.

The PSA target itself is directed at Local Authority Social Services. The Children (Leaving Care) Act imposes a duty on local authorities to keep in touch with young people who have left care in order to make sure that they receive the support to which they are entitled. Details are given in 'Working Together: Connexions and Social Services'. Local targets should not be set. Instead Partnerships should establish a baseline of the number of 19 year old care leavers in their cohort who are currently in employment, education and training and aim to increase this proportion over time.

Partnerships will be expected to show that:

- (i) the proportion of care leavers in EET is increasing year on year;
- (ii) the number of care leavers identified is in line with the number recorded by local authorities;
- (iii) the proportion of care leavers recorded as 'situation not known' is within the target level.

Currency Rules

Young People of Compulsory Education Age.		
Activity	Minimum frequency of Follow Up	Currency to Expire
Registered at school or other educational establishment	One per year	12 months from last confirmation
Educated at home	One per year	12 months from last confirmation
Custodial Institution	One per year	12 months from last confirmation
Not registered at any educational establishment	Every 3 months	3 months from last confirmation
Young People Who Have Completed Compulsory Education		
Activity	Minimum frequency of Follow Up	Currency to Expire
Full time Education	One per year	End of course or 12 months from last confirmation whichever is sooner
Employment	Once every year or 2 years	12 months from last confirmation. Can be 2 years if current situation has been confirmed since April 2003 and the client is 18+ with minimum support.
Work Based Learning (non employed status)	Every 6 months	End of course or 12 months from last confirmation whichever is sooner
Other Government Supported Training	Every 6 months	End of course or 12 months from last confirmation whichever is sooner
Temporary Employment Personal Development Opportunities Part time learning Part time employment Gap Year Students	Forward Review Date – agreed according to circumstances, can be 12 months or more	4 weeks after date or review unless contact has been made to confirm status.
Custodial Sentence	Forward Review Date – agreed with client according to circumstances	4 weeks after date or review unless contact has been made to confirm status.
NEET Group		
Available to labour market Unemployed	Every 3 months	3 months from last confirmation
Not available to labour market Supporting family Illness Pregnancy Other reason not available	Forward Review Date – agreed with client according to circumstances	4 weeks after date or review unless contact has been made to confirm status

Table 1: Type of NEET destination - November 2006

	B&D	Bexley	City	Greenwich	Hackney	Havering	Lewisham	Newham	Redbridge	Tower Hamlets	East London
NEET Group	640	430	2	713	565	554	456	753	379	573	5,065
Available to labour market	535	368	2	626	491	498	363	663	335	524	4,405
Not yet ready for work or learning	18	14	0	22	31	48	8	18	9	12	180
Awaiting an E2E place	14	4	0	19	17	10	15	8	4	2	93
Awaiting sub level 2 place	2	2	0	3	6	3	8	3	1	0	28
Awaiting level 2 place	5	6	0	7	5	15	11	9	3	2	63
Awaiting level 3+ place	2	2	2	0	2	3	0	2	0	2	15
Employment only- Refused Offer	6	1	0	3	7	2	3	11	3	4	40
Start Date agreed	7	1	0	0	4	4	0	3	3	0	22
Employment only- No Offer	33	42	0	26	21	50	12	19	16	10	229
Activity Agreement	39	26	0	16	12	37	35	32	26	40	263
Seeking employment or training	409	270	0	530	386	326	271	558	270	452	3,472
Not available to labour market	105	62	0	87	74	56	93	90	44	49	660
Young carers	2	1	0	2	3	1	1	5	1	0	16
Teenage parents	60	27	0	43	35	28	41	41	21	12	308
Illness	18	18	0	20	12	13	8	23	12	9	133
Pregnancy	23	13	0	16	9	9	33	12	8	21	144
Religious grounds	0	0	0	0	0	0	0	0	0	0	0
Unlikely to be economically active	0	3	0	0	1	2	1	1	0	1	9
Other reason	2	0	0	6	14	3	9	8	2	6	50
	%										
NEET Group	100.0%	100.0%	100.0%	100.0%	100.0%	100.0%	100.0%	100.0%	100.0%	100.0%	100.0%
Available to labour market	83.6%	85.6%	100.0%	87.8%	86.9%	89.9%	79.6%	88.0%	88.4%	91.4%	87.0%
Not yet ready for work or learning	2.8%	3.3%	0.0%	3.1%	5.5%	8.7%	1.8%	2.4%	2.4%	2.1%	3.6%
Awaiting an E2E place	2.2%	0.9%	0.0%	2.7%	3.0%	1.8%	3.3%	1.1%	1.1%	0.3%	1.8%
Awaiting sub level 2 place	0.3%	0.5%	0.0%	0.4%	1.1%	0.5%	1.8%	0.4%	0.3%	0.0%	0.6%
Awaiting level 2 place	0.8%	1.4%	0.0%	1.0%	0.9%	2.7%	2.4%	1.2%	0.8%	0.3%	1.2%
Awaiting level 3+ place	0.3%	0.5%	100.0%	0.0%	0.4%	0.5%	0.0%	0.3%	0.0%	0.3%	0.3%
Employment only- Refused Offer	0.9%	0.2%	0.0%	0.4%	1.2%	0.4%	0.7%	1.5%	0.8%	0.7%	0.8%
Start Date agreed	1.1%	0.2%	0.0%	0.0%	0.7%	0.7%	0.0%	0.4%	0.8%	0.0%	0.4%
Employment only- No Offer	5.2%	9.8%	0.0%	3.6%	3.7%	9.0%	2.6%	2.5%	4.2%	1.7%	4.5%
Activity Agreement	6.1%	6.0%	0.0%	2.2%	2.1%	6.7%	7.7%	4.2%	6.9%	7.0%	5.2%
Seeking employment or training	63.9%	62.8%	0.0%	74.3%	68.3%	58.8%	59.4%	74.1%	71.2%	78.9%	68.5%
Not available to labour market	16.4%	14.4%	0.0%	12.2%	13.1%	10.1%	20.4%	12.0%	11.6%	8.6%	13.0%
Young carers	0.3%	0.2%	0.0%	0.3%	0.5%	0.2%	0.2%	0.7%	0.3%	0.0%	0.3%
Teenage parents	9.4%	6.3%	0.0%	6.0%	6.2%	5.1%	9.0%	5.4%	5.5%	2.1%	6.1%
Illness	2.8%	4.2%	0.0%	2.8%	2.1%	2.3%	1.8%	3.1%	3.2%	1.6%	2.6%
Pregnancy	3.6%	3.0%	0.0%	2.2%	1.6%	1.6%	7.2%	1.6%	2.1%	3.7%	2.8%
Religious grounds	0.0%	0.0%	0.0%	0.0%	0.0%	0.0%	0.0%	0.0%	0.0%	0.0%	0.0%
Unlikely to be economically active	0.0%	0.7%	0.0%	0.0%	0.2%	0.4%	0.2%	0.1%	0.0%	0.2%	0.2%
Other reason	0.3%	0.0%	0.0%	0.8%	2.5%	0.5%	2.0%	1.1%	0.5%	1.0%	1.0%