



have
your
say

Zone A
(Wenlock)



Summary Results of the Zone A Review

Why have I received this booklet?

This booklet provides a summary of the changes to your Controlled Parking Zone (CPZ) that will soon take place as a result of the Zone A review.

The Council reviews CPZs to ensure that the parking controls continue to meet the needs of the local community. We generally aim to review every new CPZ after its first year of operation and every three years thereafter, as outlined in the Council's Parking and Enforcement Plan (2005).

The public consultation took place between January and March 2008. We have worked closely with local residents, the emergency services and local Councillors to finalise the design changes that will benefit all users in your area.

We would like to thank all those people who have taken part in the consultation and who have provided ongoing feedback throughout the review. Your feedback has played a vital part in developing the design changes that will soon be introduced.

Please find enclosed an attached map which details the final design of your CPZ.

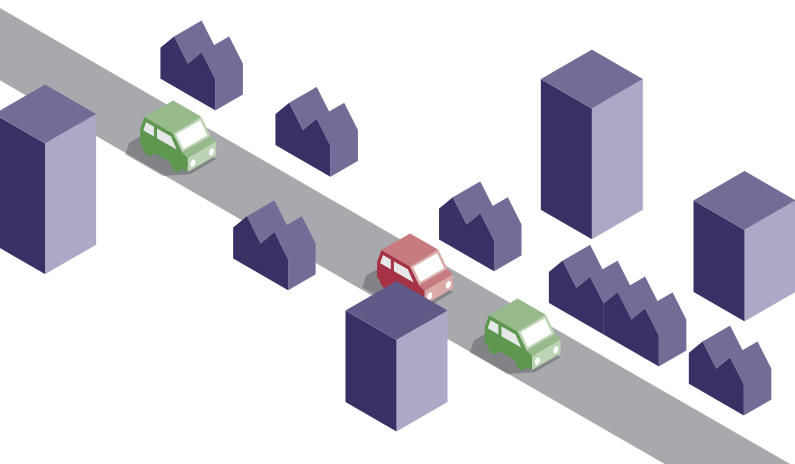
Consultation Results

Operational hours

As part of the review we asked for your preferred days and hours of operation. Overall, the majority of you favoured the current hours of control. As such the Zone A hours will remain: **Monday to Friday: 8:30am to 6:30pm.**



For a full results of the consultation and a detailed list of proposals please refer to the report on our website: www.hackney.gov.uk/parking or call Parking Services on 0208 356 8877.



Changes in bay allocation

We also asked for your views on several changes in bay allocation so that the design of parking controls better reflect the needs of local users. Based on your feedback the following bay changes will soon be made.

Street	Bay Change
Buttesland Street	Change the 'business' bay outside 77 to 85 to a 'permit' bay.
Chart Street	Change the current 'taxi stand' outside Ralph Brook Court to a 'pay and display only' bay.
East Road	Change the 'resident' bay outside 65 to 81 to a 'shared use' bay (pay and display and permit holders).
Forston Street	Change the 'residents' bay outside Thomas Fairchild Primary School to 'shared use' (pay and display and permit holders).
Napier Grove	Change the 'doctors only' bay to a 'residents' bay.
Nile Street	Change the 'limited waiting' bay outside 65 to 71 to a 'shared use' (pay and display and permit holders).
Shepherdess Walk	Change the 'shared use' bay outside 8 to 'Police Vehicle only' bay
Wharf Road	Change the two 'permit' bays at the junction with City Road to 'pay and display only' and extend the southern bay by 10m. Change the 'residents' bays outside 12 to 22 to a 'shared use' (pay and display and permit holders).
Wimbourne Street	Change the 'business' bay at the side of 155 City Road to general 'permit' bay.

Road safety changes

As part of the review we also examined the safety of your CPZ, including the safe location of parking bays and yellow lines.

The design changes that will soon be made in your CPZ have been made in accordance with the Council's design criteria; which outlines standards for the safe installation of parking restrictions in line with Department for Transport regulations and guidance.

Consideration for the safety of your CPZ has also been made with close consultation with the Emergency Services, local Councillors and the Councils own road safety team.

While we appreciate some single yellow line will be reduced across the CPZ, every effort has been made to minimise the affects on local users.

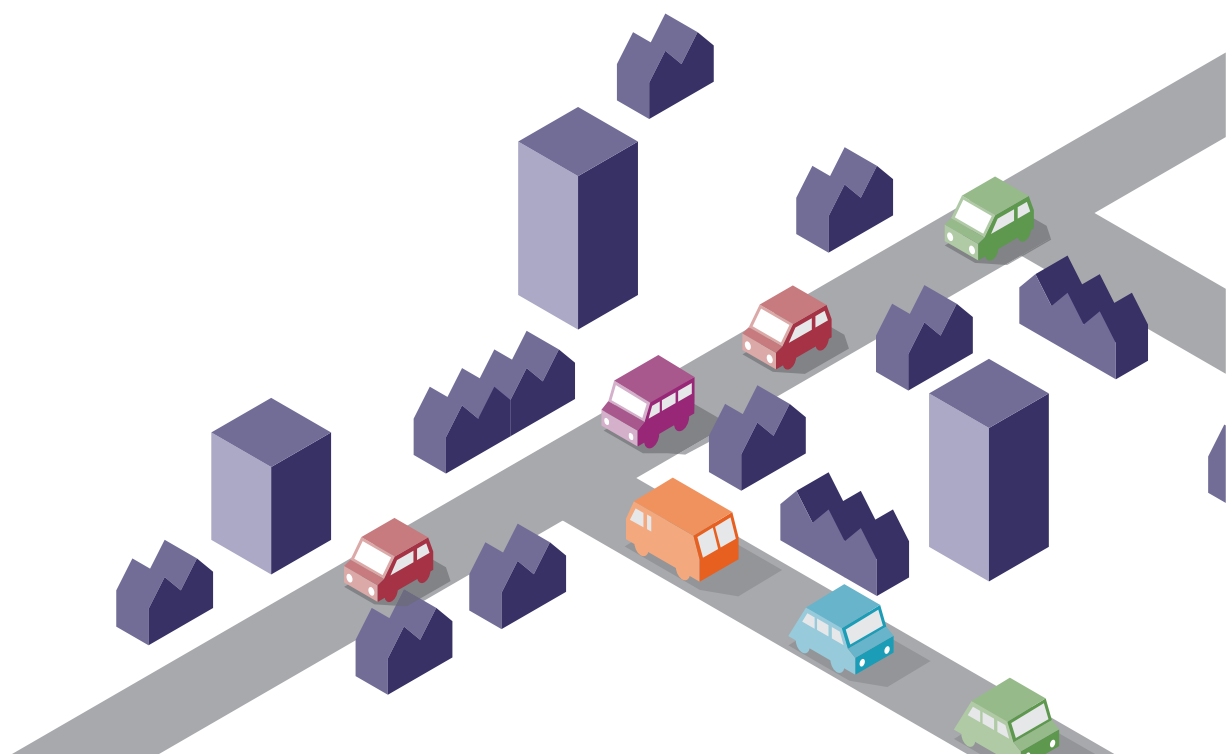


As the Council is committed to providing a safe environment for all road users, we are unable to consider further changes to the agreed installation of yellow lines where road safety may be compromised; however we will continue to review the design changes where necessary.

have **your** say about parking

Double yellow lines will be installed in the following cases:

- In narrow roads we will be installing double yellow lines to help improve road safety and the safe passage of emergency service vehicles. We have worked closely with the Fire Service to ensure that there is sufficient space on each road to safely negotiate parked vehicles and unload their equipment. Double yellow lines will be installed in roads which do not meet this requirement, as shown in the example pictures opposite.
- In heavily congested areas and priority bus routes to reduce obstructions and aid traffic flow.
- Across private driveways to help ensure 24 hour access.
- On all junctions to prevent parking and ensure visibility and access is maintained at all times.
- Where the road is too narrow to support parking on both sides.



Additional Parking Spaces

Where possible, new parking spaces will be installed where the road is wide and safe enough to do so. As a result of the review, we will be installing approximately 309 new 'safe' parking spaces' throughout the Zone which will benefit local residents, businesses and their visitors. The summary table below shows the type of parking bays being installed.

For a list of where the bays will be introduced please visit our website: www.hackney.gov.uk/parking or call Parking Services on 0208 356 8877.

All permit parking spaces including 'resident', 'pay and display', 'shared use', 'general permit' and 'business' bays are free for visitors and other non-permit holders outside of the controlled hours (after 6:30pm and at weekends).

Type of parking bay	Total no. of new bays being introduced
Resident permit holders only	144
General permit holders	90
Shared Use (Pay and Display or Permit Holders)	81
Pay and Display Only	0
Business permit holders only	- 6

Please note these figures are approximate and are based on an average parking space length of 5 metres.

Removal of parking bays

In some cases it will be necessary to remove or reduce the length of some parking bays to improve road safety. This is done only in exceptional circumstances, where a parking bay may impede visibility or cause an obstruction for motorist. The following bays will be removed or reduced in length:

Street	Change
Bevenden Street	Remove the parking bays outside 1 to 33 Finn House and relocate outside St Leonards Court.
Britannia Walk	Reduce the middle pay and display bay by 5m at its northern end. Remove the 'resident' bays between 1 to 48 and 49 to 96 Catherwood Court and replace with a double yellow line.
Charles Square	Remove the 'resident' bays on the western side of the Square.
Cranwood Street	Remove a 10m section of the parking bay outside of numbers 20 to 39 Gaddensden House and replace with double yellow line.
Provost Street	Reduce the length of the resident bay outside numbers 27 to 49.
Taplow Street	Reduce 5m of the resident bay on the western kerb line near to the junction with Micawber Street.

Key dates to remember...

Subject to weather conditions, we plan to:

- Start the sign and lining works in September 2009



Frequently asked questions

If you require further clarification about any of the following questions please contact Hackney Parking Services on 020 8356 8877

Why has there been a delay in the release of the consultation results?

During the consultation the Council received a large volume of feedback about the proposed changes being made. As a result, the Council re-evaluated the proposals and worked closely with interested parties to help produce the final design. This process took longer than anticipated. The Council would like to apologise for the delays encountered.

How do my views influence the design of the CPZ?

Public feedback helps us identify the needs and preferences of all service users so that we can develop a balanced CPZ with parking space allocated accordingly. Although limited by a finite amount of kerb space, we aim to meet demand by reallocating bays and installing new bays where possible. This is why it is so important that you provide us with your feedback during reviews.

Do you consider road safety?

We work closely with the Emergency Services and the Traffic and Highways Departments to determine safety considerations for your CPZ.

Will we be notified before the changes come into effect?

The Council will notify all affected residents and businesses well in advance of making any changes to parking bays. A reminder letter explaining the upcoming sign and line works and implementation timetable will be sent to you nearer the time.

Are CPZs just a money making scheme for the Council?

No. By law revenue generated from CPZs must be invested back into transport related improvements such as highways, street scene improvements, parking enforcement and safer car parks.



Contacts

For more information about other Hackney Council services not shown here please contact the Hackney Service Centre on 020 8356 3000 or visit www.hackney.gov.uk to download the Council's 'A-Z of Services 2009/10'.

Parking Enquiries and Appeals

For general information about Controlled Parking Zones (CPZs), permits, enforcement, parking bay suspensions and appeals against parking tickets.

Telephone 020 8356 8877

Email info@hackney.gov.uk

Web www.hackney.gov.uk

Parking Shop

Payment of PCNs, permits and general parking enquiries in person.

Address 275 Mare Street, E8 1GR

Opening Hours Monday to Friday
8.00am – 6.00pm

Saturday
9.00am – 1.00pm

Please note: From Monday 27th July the Parking shop will be located at 2 Hillman Street, E8 1FB

Parking Payments

Credit/Debit Card payments for parking permits and tickets. Please note: 50 % discount for parking tickets paid within 14 days of issue.

Telephone 020 8356 8888

Web [www.hackney.gov.uk/
parkingpayments](http://www.hackney.gov.uk/parkingpayments)

Disabled Parking

For general information about disabled parking, the companion badge and downloading permit applications.

Telephone 020 8356 6825

Email access@hackney.gov.uk

Web [www.hackney.gov.uk/
companionbadge](http://www.hackney.gov.uk/companionbadge)

