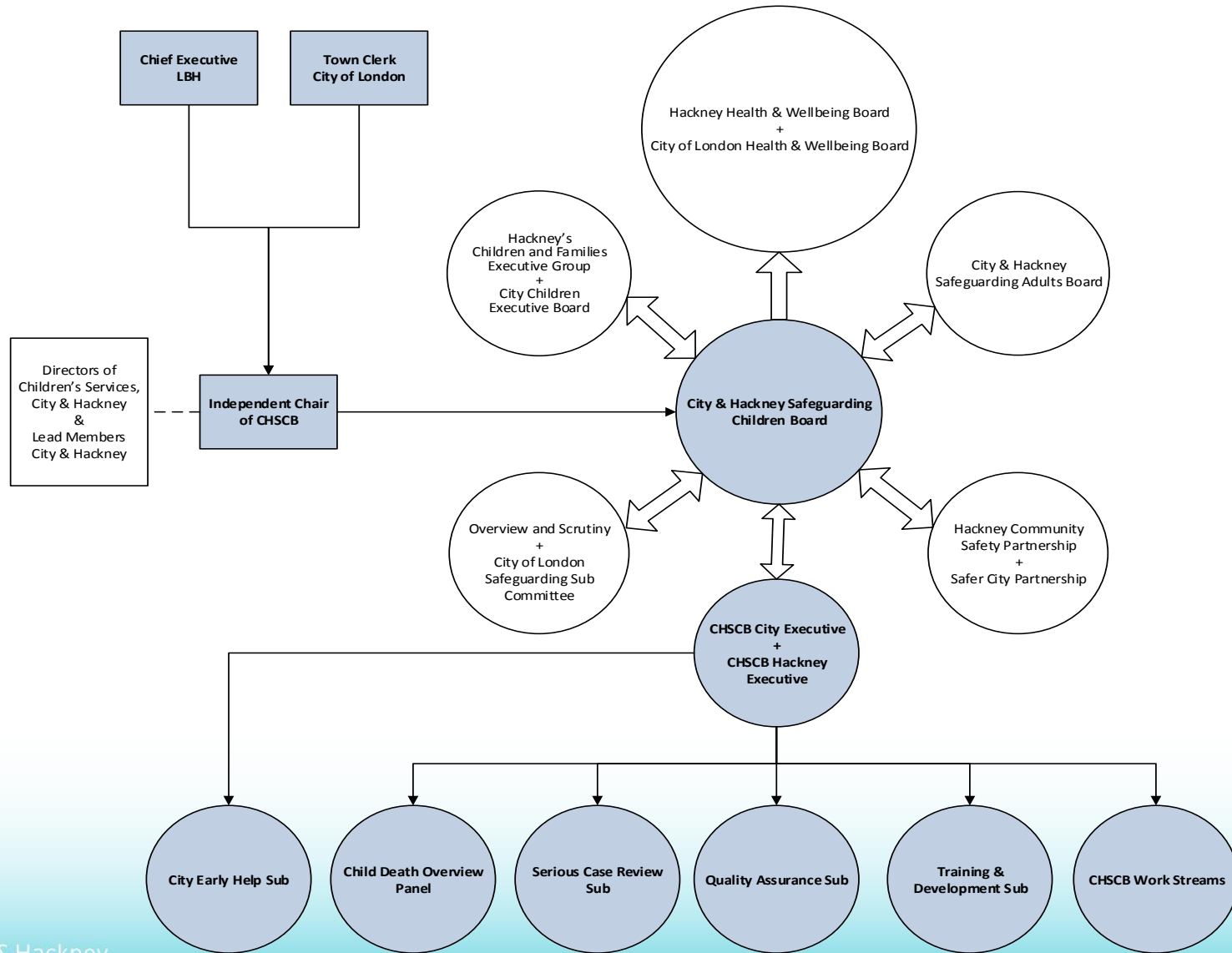


# Private Landlords Forum – safeguarding children



# Who are the CHSCB?



# CHSCB Priorities

- **The Local Safeguarding Context**
- **Early Help & Early Intervention**
- **Strong Leadership & Strong Partnership**  
(making the invisible visible)



# Why am I here?

- **Children and their families could live in your homes**
- **We want to know how we can work closer**



# Children need to be **Seen, Heard and Helped**

- Be curious about children ,
- You can be the eyes and ears,
  - Don't turn a blind eye
- “Put yourself in their shoes” and ask “what is life like for this child?”

## Questions?

- What would you do if you are worried?
  - What can the CHSCB offer me?

# Thanks



city & hackney  
safeguarding  
children board

Hackney Service Centre, 1 Hillman Street, London E8 1DY  
P\_020 8356 3661 F\_020 8356 4734  
[www.hackney.gov.uk/chscb.htm](http://www.hackney.gov.uk/chscb.htm)

Angela Bent  
Board Manager  
[Angela.bent@hackney.gov.uk](mailto:Angela.bent@hackney.gov.uk)  
0208 356 3348

chscb 